

D  
C  
B  
A

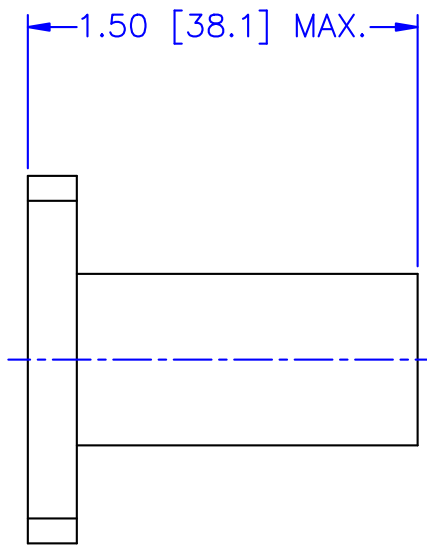
4

3

2

1

REVISIONS				
ZONE	REV	DESCRIPTION	DATE	APPROVED



SPECIFICATIONS

FREQUENCY RANGE: 50-65 GHz  
 MAX. VSWR : 1.05:1 @ 65GHz  
 FLANGE TYPE: UG-385/U  
 POWER RATING: 250 mW  
 WAVEGUIDE TYPE: WR-15  
 INPUT IMPEDANCE: 50 OHMS  
 OPERATING TEMP. RANGE: -40°C to +85°C

MATERIAL:		<b>MCLI</b> MICROWAVE COMMUNICATIONS LABORATORIES INC. 7225 30TH AVE. N. SAINT PETERSBURG, FL 33710 TEL: (727) 344-6254 FAX: (727) 381-6116 http://www.mcli.com	SCALE: N/A	
			SHEET: N/A	
UNLESS OTHERWISE SPECIFIED: TOLERANCES IN (INCHES) OR (mm) (MILLIMETERS) FRACTIONS: ± 1/64 DECIMALS: ± 0.01 ± 0.005 ANGLE: ± 1/2°		DRAWING TITLE: <b>WAVEGUIDE TERMINATION</b>		
		PART NO. <b>WT-17</b>		
DRAWN: Paibon Luexhamhan	DATE: 05-28-2009	ENGINEER'S MARK: <small>THE INFORMATION ON THIS DRAWING IS PROPRIETARY AND SHALL BE KEPT AS SUCH OR DESTROYED WITHOUT PERMISSION FROM MICROWAVE COMMUNICATIONS LABORATORIES INC. (MCLI)</small> 	CAGE CODE:	SIZE: N/A DO NOT SCALE THE DRAWING
APPROVED: T. Nguyen	DATE: 05-28-2009		0D2L5	REV: N/A DWG NO.: 84523

4

3

2

1