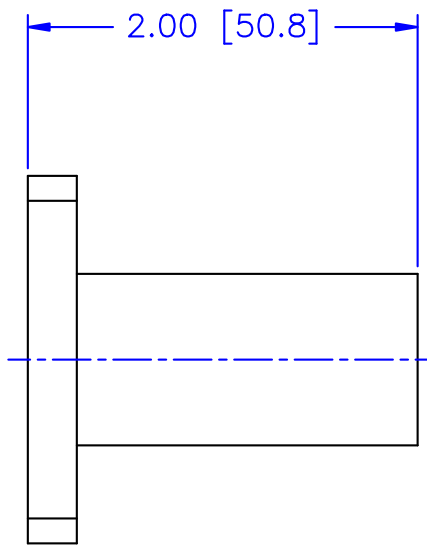


D
C
B
A

4 3 2 1

REVISIONS				
ZONE	REV	DESCRIPTION	DATE	APPROVED



SPECIFICATIONS

FREQUENCY RANGE: 26.5–40 GHz
 MAX. VSWR: 1.10:1 @ 40GHz
 FLANGE TYPE: UG–599/U
 POWER RATING: 250 mW
 WAVEGUIDE TYPE: WR–28
 INPUT IMPEDANCE: 50 OHMS
 OPERATING TEMP. RANGE: –40°C to +85°C

MATERIAL:		MCLI MICROWAVE COMMUNICATIONS LABORATORIES INC. 7225 30TH AVE. N. SAINT PETERSBURG, FL 33710 TEL: (727) 344-8254 FAX: (727) 381-8118 http://www.mcli.com	SCALE:	N/A	
UNLESS OTHERWISE SPECIFIED: TOLERANCES IN (INCHES) OR (mm) (MILLIMETERS) FRACTIONS: ± 1/64 DECIMALS: ± 0.01 ± 0.005 ANGLE: ± 1/2°			DRAWING TITLE:	WAVEGUIDE TERMINATION	
DRAWN:	DATE:	<small>ENGINEERING METHOD</small> <small>THE INFORMATION ON THIS DRAWING IS PROPRIETARY</small> <small>AND SHALL BE KEPT AS SUCH OR DESTROYED WITHOUT</small> <small>PERMISSION FROM MICROWAVE COMMUNICATIONS</small> <small>LABORATORIES INC. (MCLI)</small> <small>© 2009</small>	PART NO.:	WT-15	
APPROVED:	DATE:		CAGE CODE:	SIZE:	REV:
Pai boon Luekhamhan	05-28-2009		OD2L5	N/A	N/A
T. Nguyen	05-28-2009		DO NOT SCALE THE DRAWING		DWG NO.:
			84522		

4 3 2 1