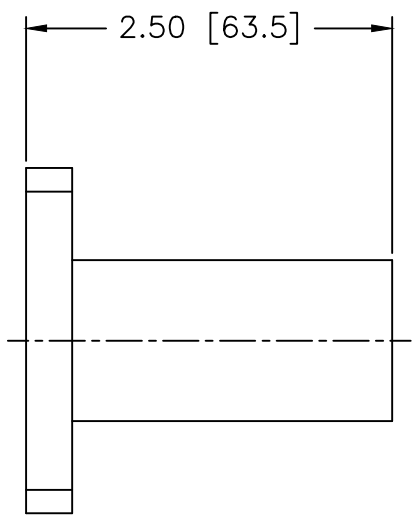


4 | 3 | 2 | 1

REVISIONS				
ZONE	REV	DESCRIPTION	DATE	APPROVED



SPECIFICATIONS

FREQUENCY RANGE: 18–26.5 GHz
 MAX. VSWR: 1.10:1 @ 26.5 GHz
 FLANGE TYPE: UG–595/U
 POWER RATING: 250 mW
 WAVEGUIDE TYPE: WR–42
 INPUT IMPEDANCE: 50 OHMS
 OPERATING TEMP. RANGE: –40°C to +85°C

MATERIAL:		MICROWAVE COMMUNICATIONS LABORATORIES INC. 7225 SOUTH AVE. N. SAINT PETERSBURG, FL 33710 TEL: (727) 344-6254 FAX: (727) 381-8116 HTTP://WWW.MCLI.COM		SCALE: N/A
UNLESS OTHERWISE SPECIFIED:		DRAWING TITLE: WAVEGUIDE TERMINATION		
TOLERANCES		PART NO. WT-14		
IN (INCHES) OR (mm) (MILLIMETERS)		CAGE CODE: OD2L5		
FRACTIONS: ± 1/64		SIZE: N/A		
DECIMALS: ± 0.01 ± 0.005		REV: N/A		
ANGLE: ± 1/2°		DO NOT SCALE THE DRAWING		
DRAWN: Paiboon Luekhamhan		DATE: 05-28-2009		
APPROVED: T. Nguyen		DATE: 05-28-2009		
<small> EXCEPT AS NOTED, THE DIMENSIONS IN THIS DRAWING ARE PROPRIETARY AND SHALL BE KEPT AS SUCH AND SHOWN WITHIN PROVISIONAL FROM ANY AND ALL COMMERCIAL OR INDUSTRIAL PURPOSES WITHOUT THE WRITTEN PERMISSION OF MCLI. </small>				
		DWG NO. 84521		

D
C
B
A

D
C
B
A

4 | 3 | 2 | 1