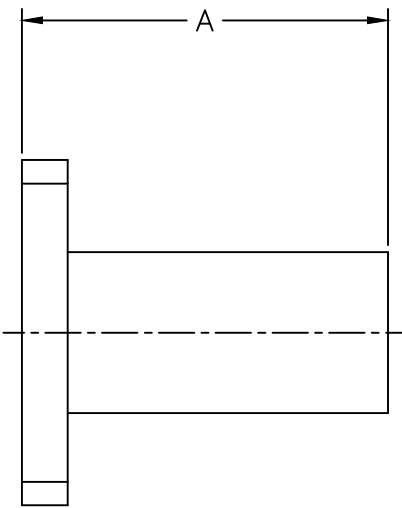


REVISIONS				
ZONE	REV	DESCRIPTION	DATE	APPROVED

PART NO.	FREQ. GHz	EIA DESIGN	VSWR	FLANGE	WATTS	DIM. A
WT-1	1.12-1.7	WR650	1.05 Max.	CPRF	25	12.5
WT-2	1.7-2.6	WR430	1.05 Max.	CPRF	15	11
WT-3	2.2-3.3	WR340	1.05 Max.	CPRF	12	10.75
WT-4	2.6-3.95	WR284	1.05 Max.	COVER	10	10.75
WT-5	3.3-4.9	WR229	1.05 Max.	CPRF	10	7.5
WT-6	3.95-5.85	WR187	1.05 Max.	COVER	8	6.25
WT-7	4.9-7.05	WR159	1.05 Max.	CPRF	7	6
WT-8	5.85-8.2	WR137	1.05 Max.	CPRF	6	5.5
WT-9	7.05-10	WR112	1.05 Max.	COVER	4	5
WT-10	7-11	WR102	1.05 Max.	COVER	3	4
WT-11	8.2-12.4	WR90	1.05 Max.	COVER	4	4
WT-12	10-15	WR75	1.05 Max.	COVER	2	4
WT-13	12.4-18	WR62	1.05 Max.	COVER	1.5	4
WT-14	18-26.5	WR42	1.05 Max.	COVER	0.5	2.5
WT-15	26.5-40	WR28	1.05 Max.	COVER	0.5	2
WT-16	33-50	WR22	1.05 Max.	COVER	0.5	1.75
WT-17	50-60	WR15	1.05 Max.	COVER	0.25	1.5



EXAMPLE: ORDER PART NUMBER WT-1-L-4-A-1

POWER	FLANGE	MATERIAL	FINISH
L = LOW	1 = CPRF	A = ALUMINUM	1 = IRIDITE
M = MIDIU	2 = CPRG	B = BRASS	2 = SILVER
	3 = COVER		3 = SPECIAL
	4 = CHOKE		
	5 = SPECIAL		

MATERIAL:		<b>MCLI</b> MICROWAVE COMMUNICATIONS LABORATORIES INC. 7225 30TH AVE. N. SAINT PETERSBURG, FL 33710 TEL: (727) 344-6254 FAX: (727) 381-8116 <a href="http://www.MCLI.com">http://www.MCLI.com</a>		SCALE: N/A
UNLESS OTHERWISE SPECIFIED: TOLERANCES IN (INCHES) OR (mm) (MILLIMETERS) FRACTIONS: ± 1/64 DECIMALS: ± 0.01 ± 0.005 ANGLE: ± 1/2°		DRAWING TITLE: WAVEGUIDE TERMINATION, LOW POWER		
DRAWN: Paiboon Luekhamhan	DATE: 02-02-2009	PART NO. WT-1 to WT-16		
APPROVED: T. Nguyen	DATE: 02-02-2009	CAGE CODE: OD2L5	SIZE: N/A REV: N/A DWG NO.: 84098	
		DO NOT SCALE THE DRAWING		