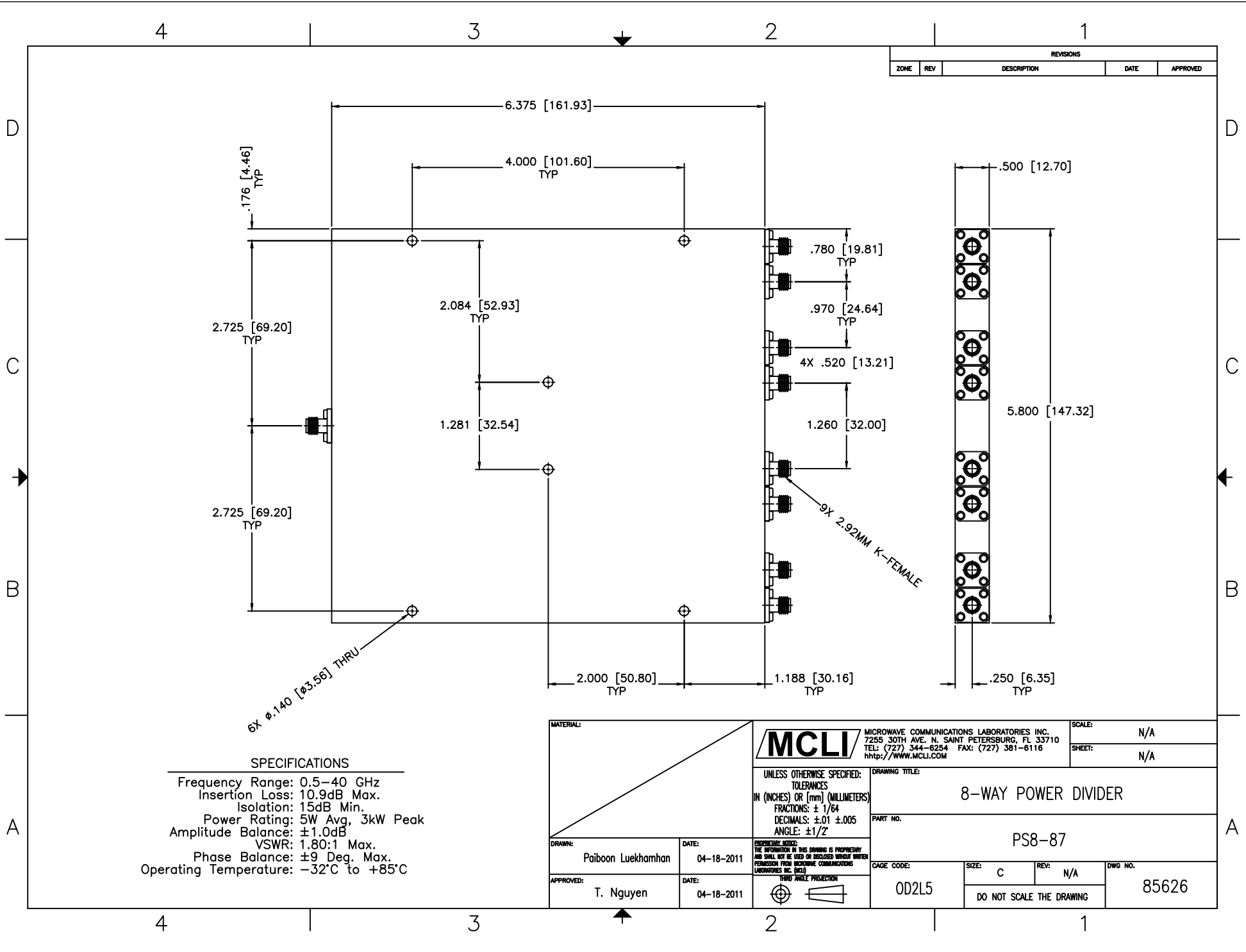


| REVISIONS | | | | |
|-----------|-----|-------------|------|----------|
| ZONE | REV | DESCRIPTION | DATE | APPROVED |
| | | | | |



SPECIFICATIONS

Frequency Range: 0.5–40 GHz
 Insertion Loss: 10.9dB Max.
 Isolation: 15dB Min.
 Power Rating: 5W Avg, 3kW Peak
 Amplitude Balance: ±1.0dB
 VSWR: 1.80:1 Max.
 Phase Balance: ±9 Deg. Max.
 Operating Temperature: -32°C to +85°C

| | | | | | | |
|---------------------------------|-------|---|--|-------|------------|----------|
| MATERIAL: | | | MICROWAVE COMMUNICATIONS LABORATORIES INC. 7255 30TH AVE. N. SAINT PETERSBURG, FL 33710 TEL: (727) 344-6254 FAX: (727) 381-6116 http://www.mcli.com | | SCALE: N/A | |
| | | | UNLESS OTHERWISE SPECIFIED: TOLERANCES IN (INCHES) OR (mm) (MILLIMETERS) FRACTIONS: ± 1/64 DECIMALS: ±.01 ±.005 ANGLE: ±1/2° | | SHEET: N/A | |
| DRAWING TITLE: | | 8-WAY POWER DIVIDER | | | | |
| PART NO.: | | PS8-87 | | | | |
| DRAWN: | DATE: | PROPRIETARY NOTICE: THE INFORMATION IN THIS DRAWING IS PROPRIETARY AND SHALL NOT BE USED OR DISCLOSED WITHOUT WRITTEN PERMISSION FROM MICROWAVE COMMUNICATIONS LABORATORIES INC. (MCLI) | CAGE CODE: | SIZE: | REV: | DWG NO.: |
| APPROVED: | DATE: | | OD2L5 | C | N/A | 85626 |
| Paiboon Luekhamhan T. Nguyen | | THIRD ANGLE PROJECTION | DO NOT SCALE THE DRAWING | | | |