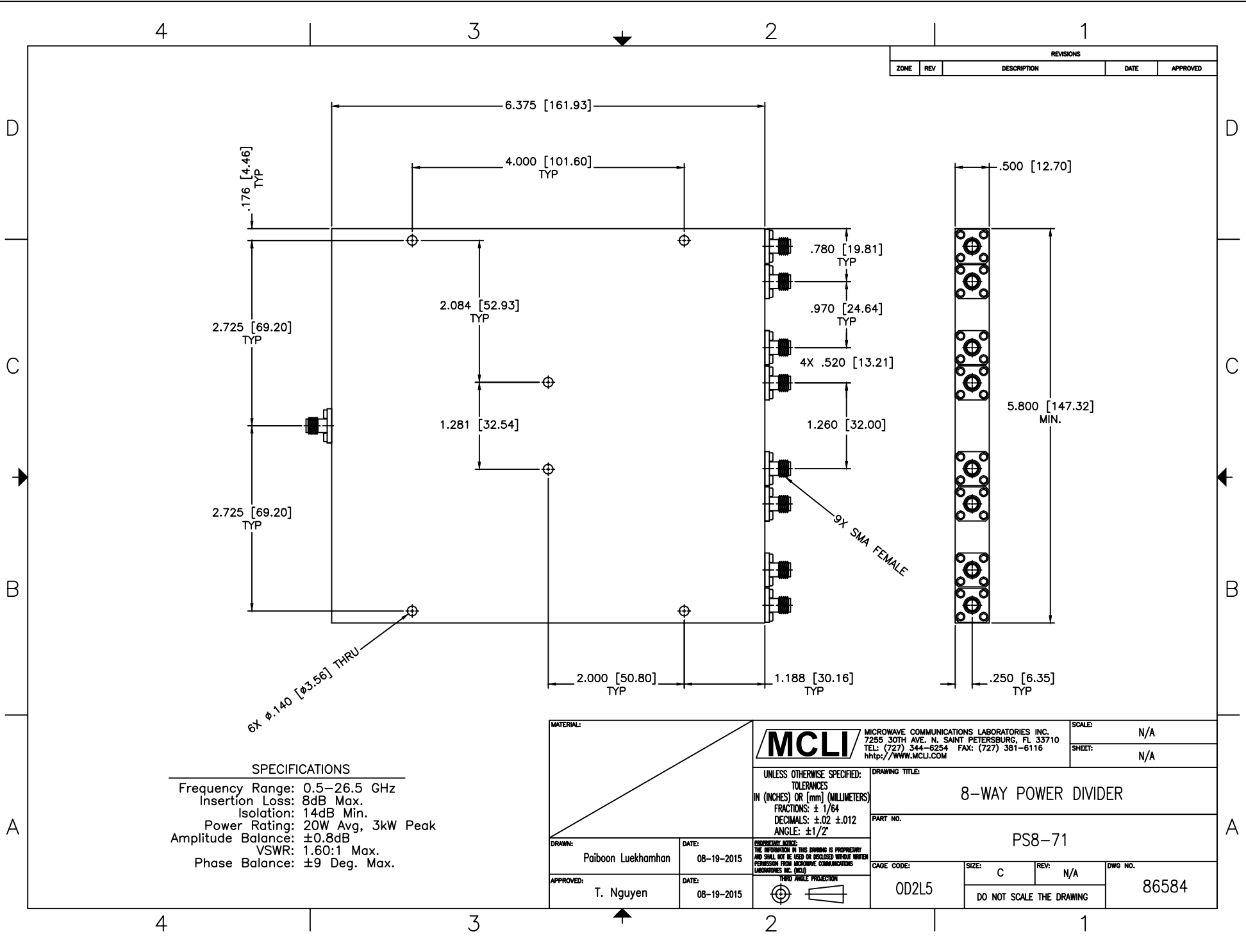


REVISIONS				
ZONE	REV	DESCRIPTION	DATE	APPROVED



SPECIFICATIONS

Frequency Range: 0.5–26.5 GHz
 Insertion Loss: 8dB Max.
 Isolation: 14dB Min.
 Power Rating: 20W Avg, 3kW Peak
 Amplitude Balance: ±0.8dB
 VSWR: 1.60:1 Max.
 Phase Balance: ±9 Deg. Max.

MATERIAL:			MICROWAVE COMMUNICATIONS LABORATORIES INC. 7255 30TH AVE. N. SAINT PETERSBURG, FL 33710 TEL: (727) 344-6254 FAX: (727) 381-6116 http://WWW.MCLI.COM		SCALE: N/A
			UNLESS OTHERWISE SPECIFIED: TOLERANCES IN (INCHES) OR [mm] (MILLIMETERS) FRACTIONS: ± 1/64 DECIMALS: ±0.02 ±0.012 ANGLE: ±1/2°		SHEET: N/A
DRAWING TITLE:		8-WAY POWER DIVIDER			
PART NO.:		PS8-71			
DRAWING: Paiboon Luekhamhan	DATE: 08-19-2015	PROPRIETARY NOTICE: THE INFORMATION IN THIS DRAWING IS PROPRIETARY AND SHALL NOT BE USED OR DISCLOSED WITHOUT WRITTEN PERMISSION FROM MICROWAVE COMMUNICATIONS LABORATORIES INC. (MCLI)		CAGE CODE: OD2L5	SIZE: C
APPROVED: T. Nguyen	DATE: 08-19-2015			REV: N/A	DWG NO. 86584
DO NOT SCALE THE DRAWING					