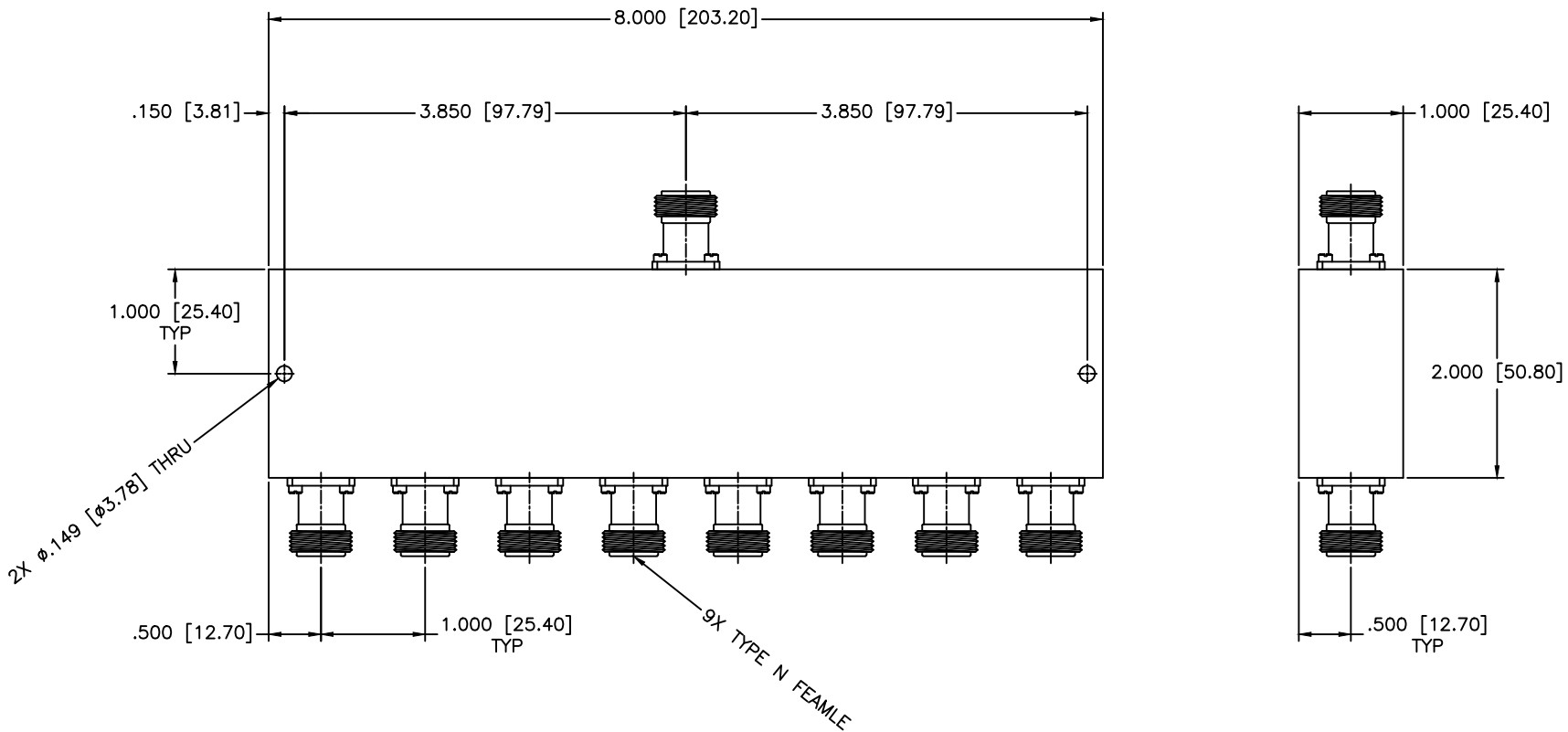


REVISIONS				
ZONE	REV	DESCRIPTION	Date	APPROVED



SPECIFICATIONS

Frequency Range: 5.8–8.5 GHz
 Input VSWR: 1.40:1/1.25:1 Max.
 Insertion Loss: 1.0dB Max.
 Isolation: 17dB Min.
 Phase Balance: ±10 Deg. Max.
 Amplitude Balance: ±0.4dB Max.
 Power Rating: 30W (Load vswr @ 1.2)

MATERIAL:	
DRAWN: Paiboon Luekhamhan	DATE: 08-11-2003
APPROVED: T. Nguyen	DATE: 08-11-2003



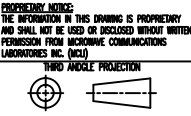
MICROWAVE COMMUNICATIONS LABORATORIES INC.
 7255 30TH AVE. N. SAINT PETERSBURG, FL 33710
 TEL: (727) 344-6254 FAX: (727) 381-6116
 http://WWW.MCLI.COM

SCALE:	N/A
SHEET:	N/A

UNLESS OTHERWISE SPECIFIED:
 TOLERANCES
 IN (INCHES) OR [mm] (MILLIMETERS)
 FRACTIONS: ± 1/64
 DECIMALS: ±.01 ±.005
 ANGLE: ±1/2°

DRAWING TITLE:
 8-WAY POWER DIVIDER

PART NO.
 PS8-45/NF



CAGE CODE: OD2L5	SIZE: A	REV: N/A	DWG NO. 82071
DO NOT SCALE THE DRAWING			