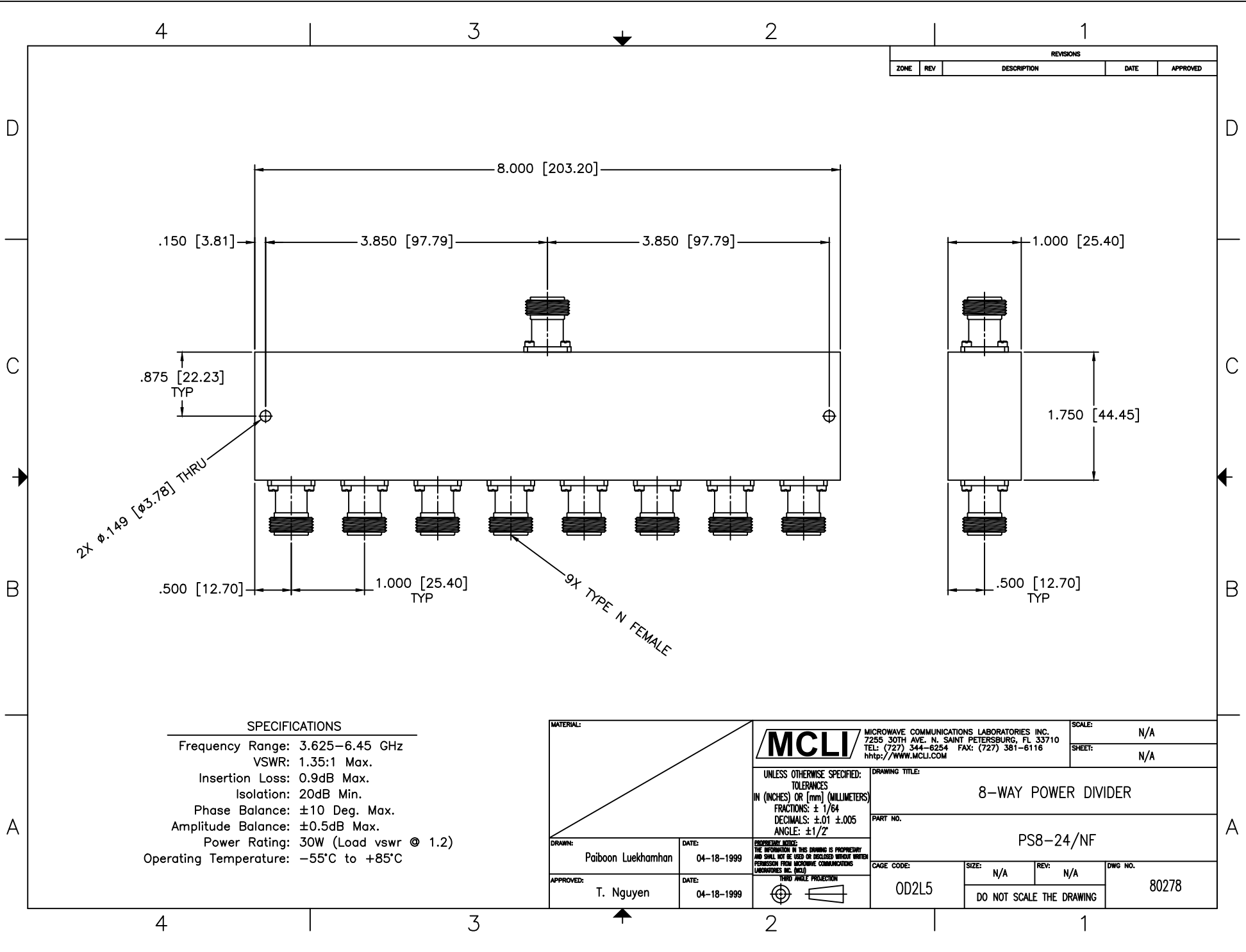


REVISIONS				
ZONE	REV	DESCRIPTION	DATE	APPROVED



2X  $\phi$ .149 [3.78] THRU

9X TYPE N FEMALE

**SPECIFICATIONS**

Frequency Range: 3.625–6.45 GHz  
 VSWR: 1.35:1 Max.  
 Insertion Loss: 0.9dB Max.  
 Isolation: 20dB Min.  
 Phase Balance:  $\pm 10$  Deg. Max.  
 Amplitude Balance:  $\pm 0.5$ dB Max.  
 Power Rating: 30W (Load vswr @ 1.2)  
 Operating Temperature:  $-55^{\circ}\text{C}$  to  $+85^{\circ}\text{C}$

MATERIAL:			MICROWAVE COMMUNICATIONS LABORATORIES INC. 7255 30TH AVE. N. SAINT PETERSBURG, FL 33710 TEL: (727) 344-6254 FAX: (727) 381-6116 http://WWW.MCLI.COM		SCALE: N/A
UNLESS OTHERWISE SPECIFIED: TOLERANCES IN (INCHES) OR [mm] (MILLIMETERS) FRACTIONS: $\pm 1/64$ DECIMALS: $\pm 0.01 \pm 0.005$ ANGLE: $\pm 1/2^{\circ}$			DRAWING TITLE: <b>8-WAY POWER DIVIDER</b>		SHEET: N/A
DRAWN: Paiboon Luexhamhan		DATE: 04-18-1999		PART NO.: PS8-24/NF	
APPROVED: T. Nguyen		DATE: 04-18-1999		CAGE CODE: OD2L5	SIZE: N/A    REV: N/A    DWG NO.: 80278 DO NOT SCALE THE DRAWING

