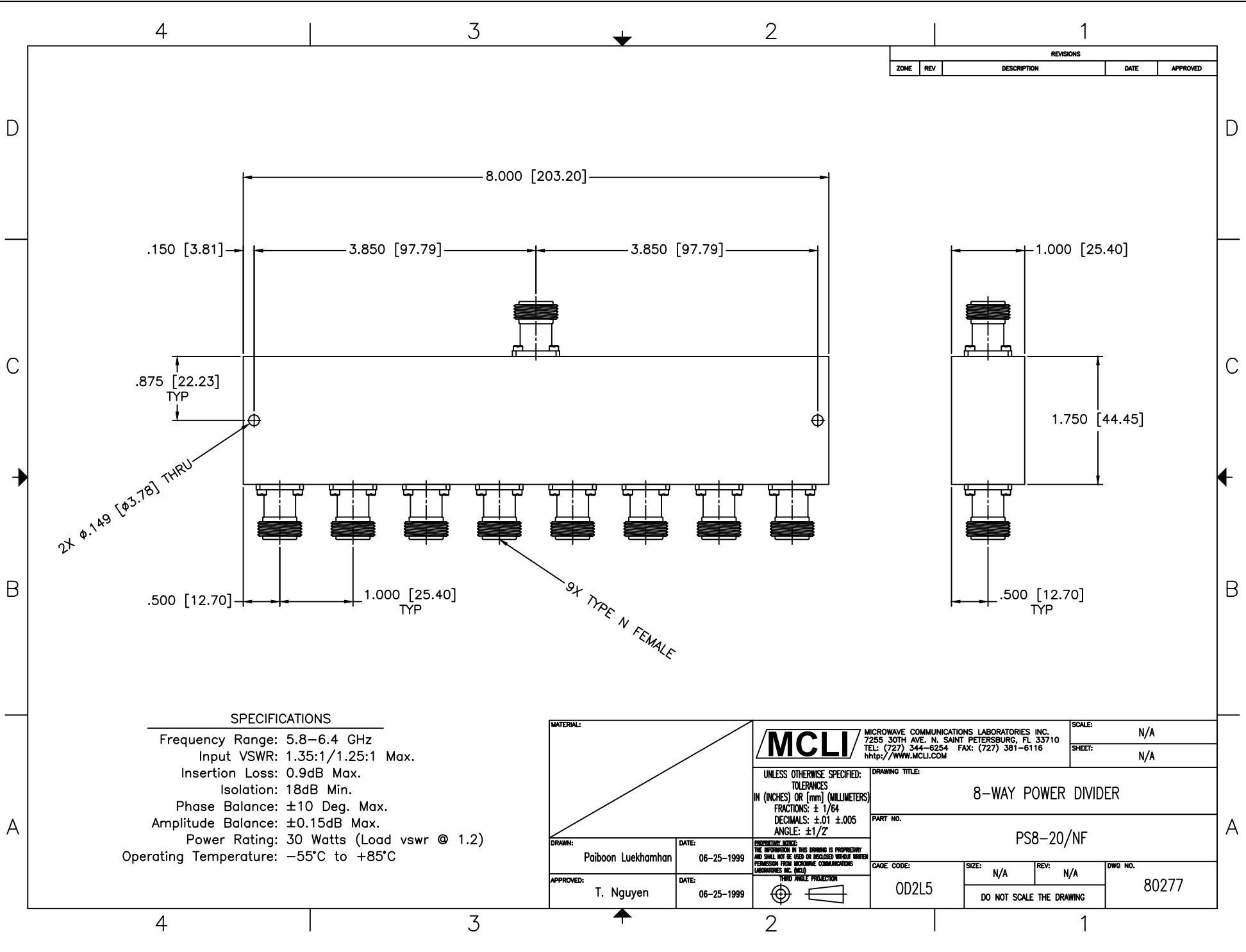


REVISIONS				
ZONE	REV	DESCRIPTION	DATE	APPROVED



SPECIFICATIONS

Frequency Range: 5.8–6.4 GHz
 Input VSWR: 1.35:1/1.25:1 Max.
 Insertion Loss: 0.9dB Max.
 Isolation: 18dB Min.
 Phase Balance: ±10 Deg. Max.
 Amplitude Balance: ±0.15dB Max.
 Power Rating: 30 Watts (Load vswr @ 1.2)
 Operating Temperature: -55°C to +85°C

MATERIAL:		 MCLI MICROWAVE COMMUNICATIONS LABORATORIES INC. 7255 30TH AVE. N. SAINT PETERSBURG, FL 33710 TEL: (727) 344-6254 FAX: (727) 381-6116 http://www.mcli.com	SCALE:	N/A
			SHEET:	N/A
DRAWING TITLE:		8-WAY POWER DIVIDER		
PART NO.:		PS8-20/NF		
DRAWN:	DATE:	<small>UNLESS OTHERWISE SPECIFIED: TOLERANCES IN (INCHES) OR [mm] (MILLIMETERS) FRACTIONS: ± 1/64 DECIMALS: ±.01 ±.005 ANGLE: ±1/2°</small>	CAGE CODE:	SIZE:
APPROVED:	DATE:		OD2L5	N/A
Paiboon Luekhamhan T. Nguyen		<small>PROPRIETARY NOTICE: THE INFORMATION IN THIS DRAWING IS PROPRIETARY AND SHALL NOT BE USED OR DISCLOSED WITHOUT WRITTEN PERMISSION FROM MICROWAVE COMMUNICATIONS LABORATORIES INC. (MCLI)</small>	<small>DO NOT SCALE THE DRAWING</small>	DWG NO. 80277