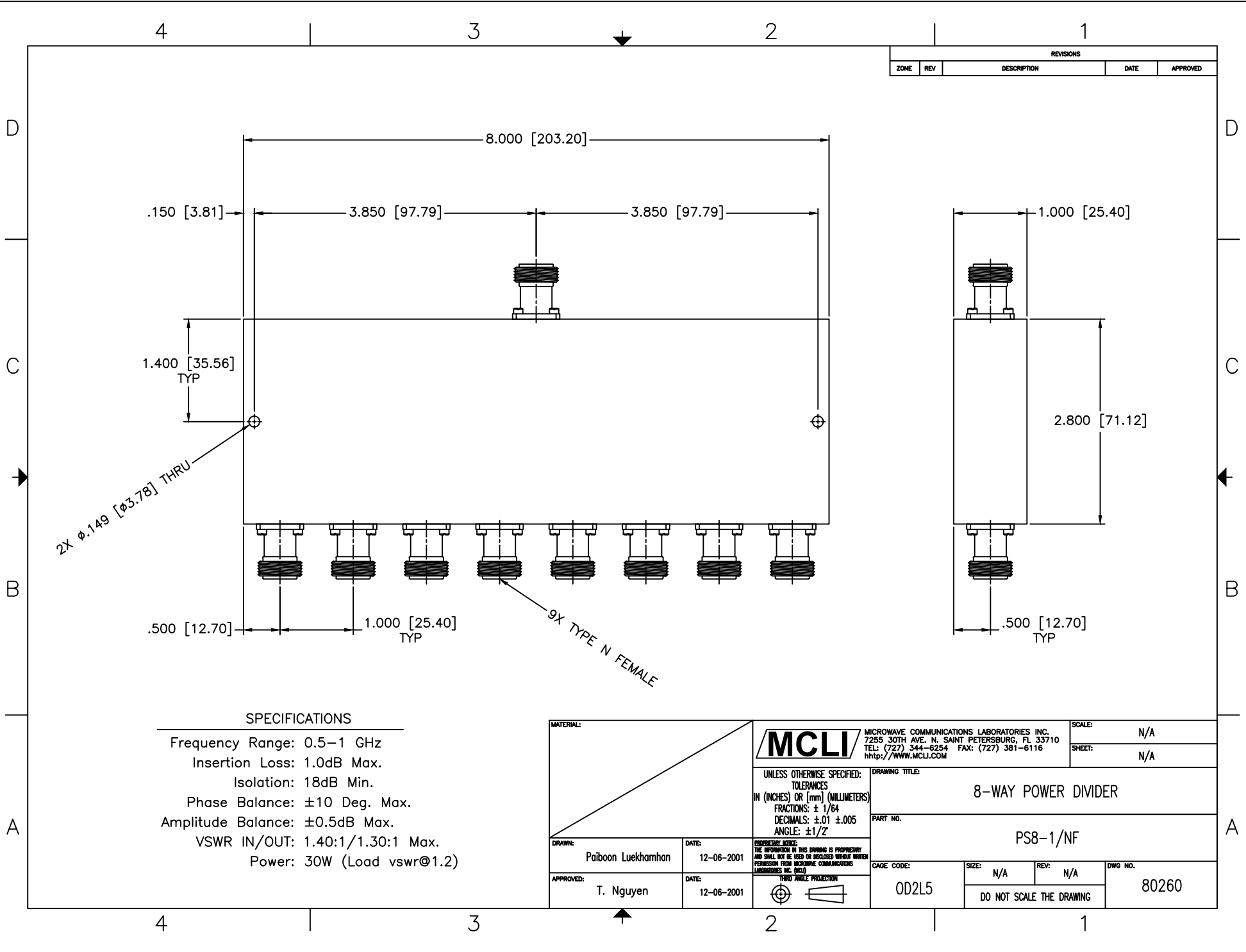


REVISIONS				
ZONE	REV	DESCRIPTION	DATE	APPROVED



**SPECIFICATIONS**

Frequency Range: 0.5–1 GHz  
 Insertion Loss: 1.0dB Max.  
 Isolation: 18dB Min.  
 Phase Balance: ±10 Deg. Max.  
 Amplitude Balance: ±0.5dB Max.  
 VSWR IN/OUT: 1.40:1/1.30:1 Max.  
 Power: 30W (Load vswr@1.2)

MATERIAL:			MICROWAVE COMMUNICATIONS LABORATORIES INC. 7255 30TH AVE. N. SAINT PETERSBURG, FL 33710 TEL: (727) 344-6254 FAX: (727) 381-6116 http://www.mcli.com		SCALE: N/A
UNLESS OTHERWISE SPECIFIED: TOLERANCES IN (INCHES) OR [mm] (MILLIMETERS) FRACTIONS: ± 1/64 DECIMALS: ±.01 ±.005 ANGLE: ±1/2°			DRAWING TITLE: <b>8-WAY POWER DIVIDER</b>		SHEET: N/A
DRAWING: Paiboon Luekhamhan		DATE: 12-06-2001		PART NO.: PS8-1/NF	
APPROVED: T. Nguyen		DATE: 12-06-2001		SIZE: N/A	
THIRD ANGLE PROJECTION		CAGE CODE: OD2L5		REV: N/A	
				DWG NO.: 80260	
DO NOT SCALE THE DRAWING					