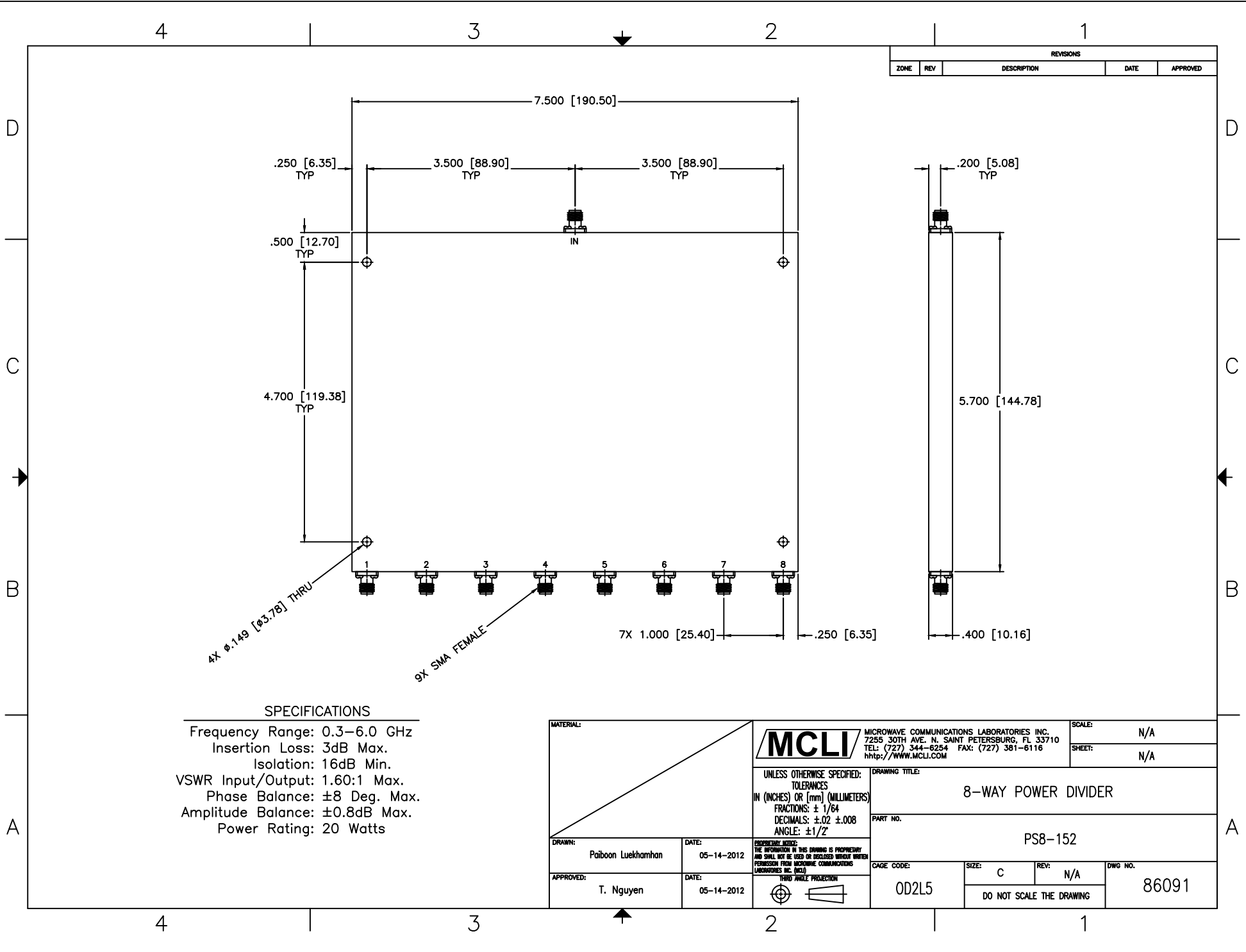


REVISIONS				
ZONE	REV	DESCRIPTION	DATE	APPROVED



**SPECIFICATIONS**

Frequency Range: 0.3–6.0 GHz  
 Insertion Loss: 3dB Max.  
 Isolation: 16dB Min.  
 VSWR Input/Output: 1.60:1 Max.  
 Phase Balance:  $\pm 8$  Deg. Max.  
 Amplitude Balance:  $\pm 0.8$ dB Max.  
 Power Rating: 20 Watts

MATERIAL:			MICROWAVE COMMUNICATIONS LABORATORIES INC. 7255 30TH AVE. N. SAINT PETERSBURG, FL 33710 TEL: (727) 344-6254 FAX: (727) 381-6116 http://WWW.MCLI.COM		SCALE:	N/A	
			UNLESS OTHERWISE SPECIFIED: TOLERANCES IN (INCHES) OR [mm] (MILLIMETERS) FRACTIONS: $\pm 1/64$ DECIMALS: $\pm 0.02 \pm 0.08$ ANGLE: $\pm 1/2^\circ$	DRAWING TITLE:		8-WAY POWER DIVIDER	
			PART NO.		PS8-152		
DRAWN:	Paiboon Luekhamhan	DATE:	05-14-2012	PROPRIETARY NOTICE:	THE INFORMATION IN THIS DRAWING IS PROPRIETARY AND SHALL NOT BE USED OR REPRODUCED WITHOUT WRITTEN PERMISSION FROM MICROWAVE COMMUNICATIONS LABORATORIES INC. (MCLI)		
APPROVED:	T. Nguyen	DATE:	05-14-2012	THIRD ANGLE PROJECTION	CAGE CODE:	OD2L5	
				SIZE:	C	REV:	N/A
				DO NOT SCALE THE DRAWING		DWG NO.:	86091