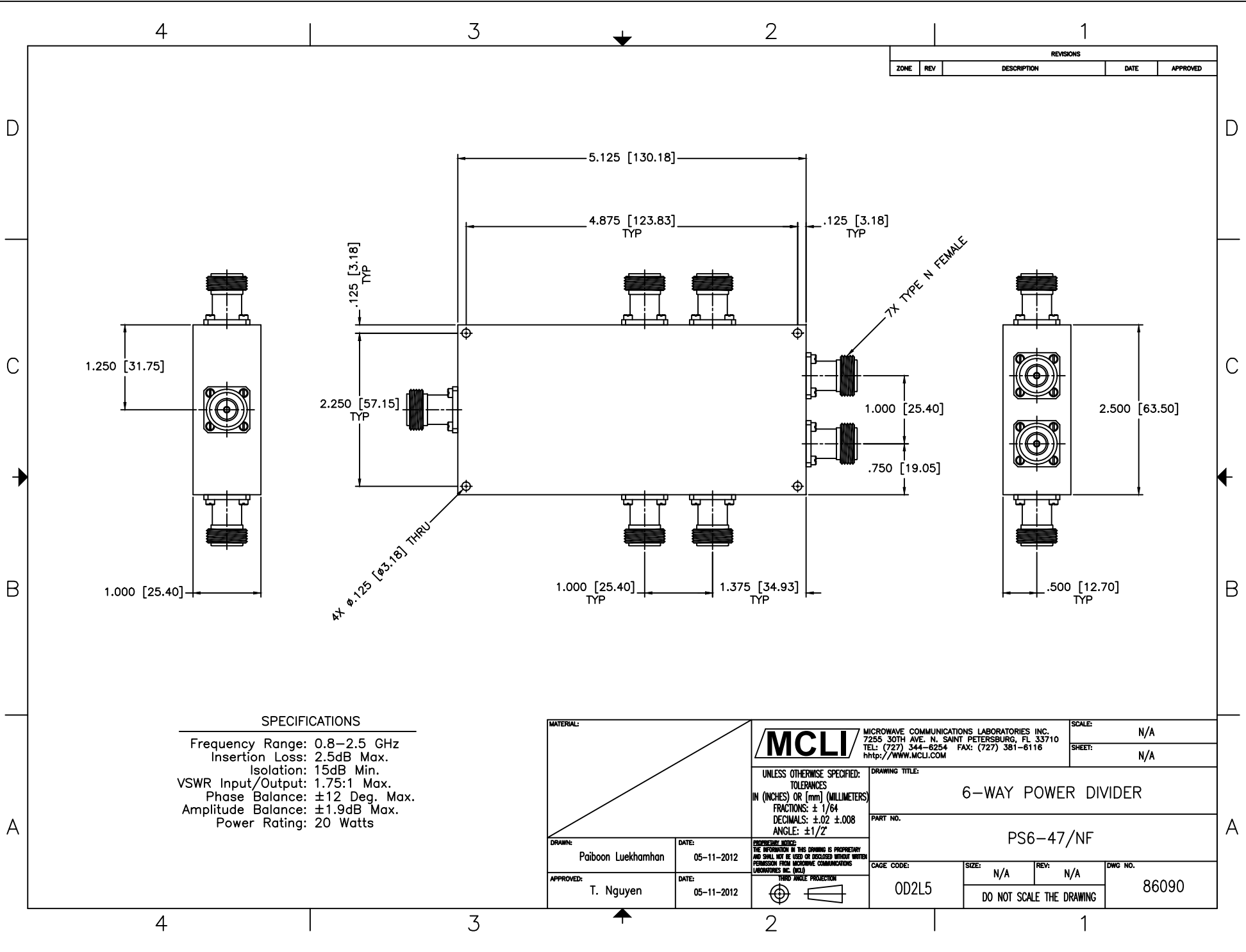


REVISIONS				
ZONE	REV	DESCRIPTION	DATE	APPROVED



SPECIFICATIONS

Frequency Range: 0.8–2.5 GHz
 Insertion Loss: 2.5dB Max.
 Isolation: 15dB Min.
 VSWR Input/Output: 1.75:1 Max.
 Phase Balance: ±12 Deg. Max.
 Amplitude Balance: ±1.9dB Max.
 Power Rating: 20 Watts

MATERIAL:			MICROWAVE COMMUNICATIONS LABORATORIES INC. 7255 30TH AVE. N. SAINT PETERSBURG, FL 33710 TEL: (727) 344-6254 FAX: (727) 381-6116 http://www.MCLI.COM		SCALE: N/A
UNLESS OTHERWISE SPECIFIED: TOLERANCES IN (INCHES) OR [mm] (MILLIMETERS) FRACTIONS: ± 1/64 DECIMALS: ±.02 ±.008 ANGLE: ±1/2°			DRAWING TITLE: 6-WAY POWER DIVIDER		SHEET: N/A
DRAWING: Paiboon Luekhamhan		DATE: 05-11-2012		PART NO.: PS6-47/NF	
APPROVED: T. Nguyen		DATE: 05-11-2012		CAGE CODE: OD2L5	
THIRD ANGLE PROJECTION		SIZE: N/A		REV: N/A	DWG NO.: 86090
DO NOT SCALE THE DRAWING					