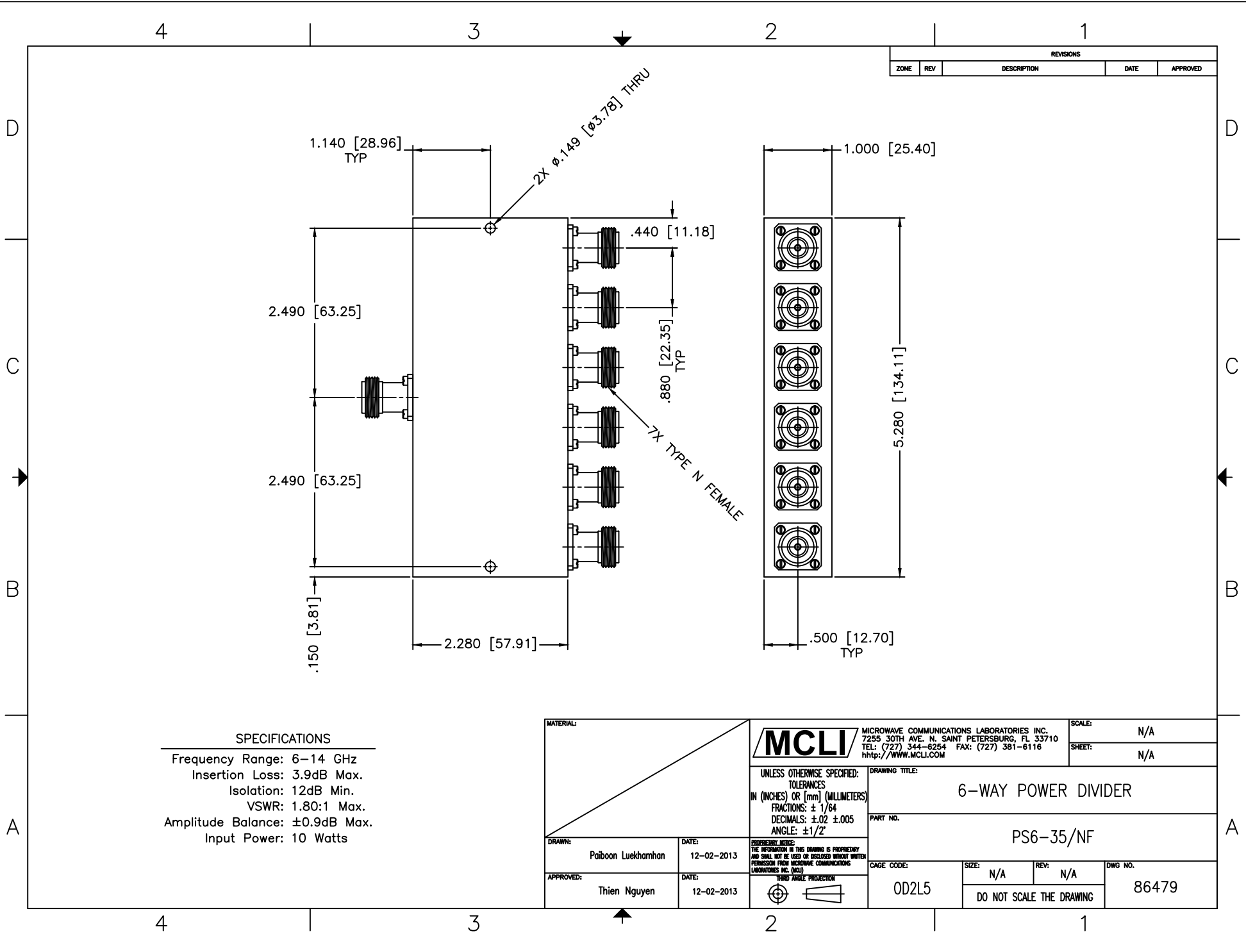


REVISIONS				
ZONE	REV	DESCRIPTION	DATE	APPROVED



SPECIFICATIONS

Frequency Range: 6–14 GHz
 Insertion Loss: 3.9dB Max.
 Isolation: 12dB Min.
 VSWR: 1.80:1 Max.
 Amplitude Balance: ±0.9dB Max.
 Input Power: 10 Watts

MATERIAL:	
DRAWN: Paiboon Luekhamhan	DATE: 12-02-2013
APPROVED: Thien Nguyen	DATE: 12-02-2013

MCLI MICROWAVE COMMUNICATIONS LABORATORIES INC.
 7255 30TH AVE. N. SAINT PETERSBURG, FL 33710
 TEL: (727) 344-6254 FAX: (727) 381-6116
<http://WWW.MCLI.COM>

SCALE:	N/A
SHEET:	N/A

UNLESS OTHERWISE SPECIFIED:
 TOLERANCES
 IN (INCHES) OR [mm] (MILLIMETERS)
 FRACTIONS: ± 1/64
 DECIMALS: ±.02 ±.005
 ANGLE: ±1/2°

DRAWING TITLE:
6-WAY POWER DIVIDER

PART NO.:
PS6-35/NF

THIRD ANGLE PROJECTION

CAGE CODE: OD2L5	SIZE: N/A	REV: N/A	DWG NO.: 86479
DO NOT SCALE THE DRAWING			