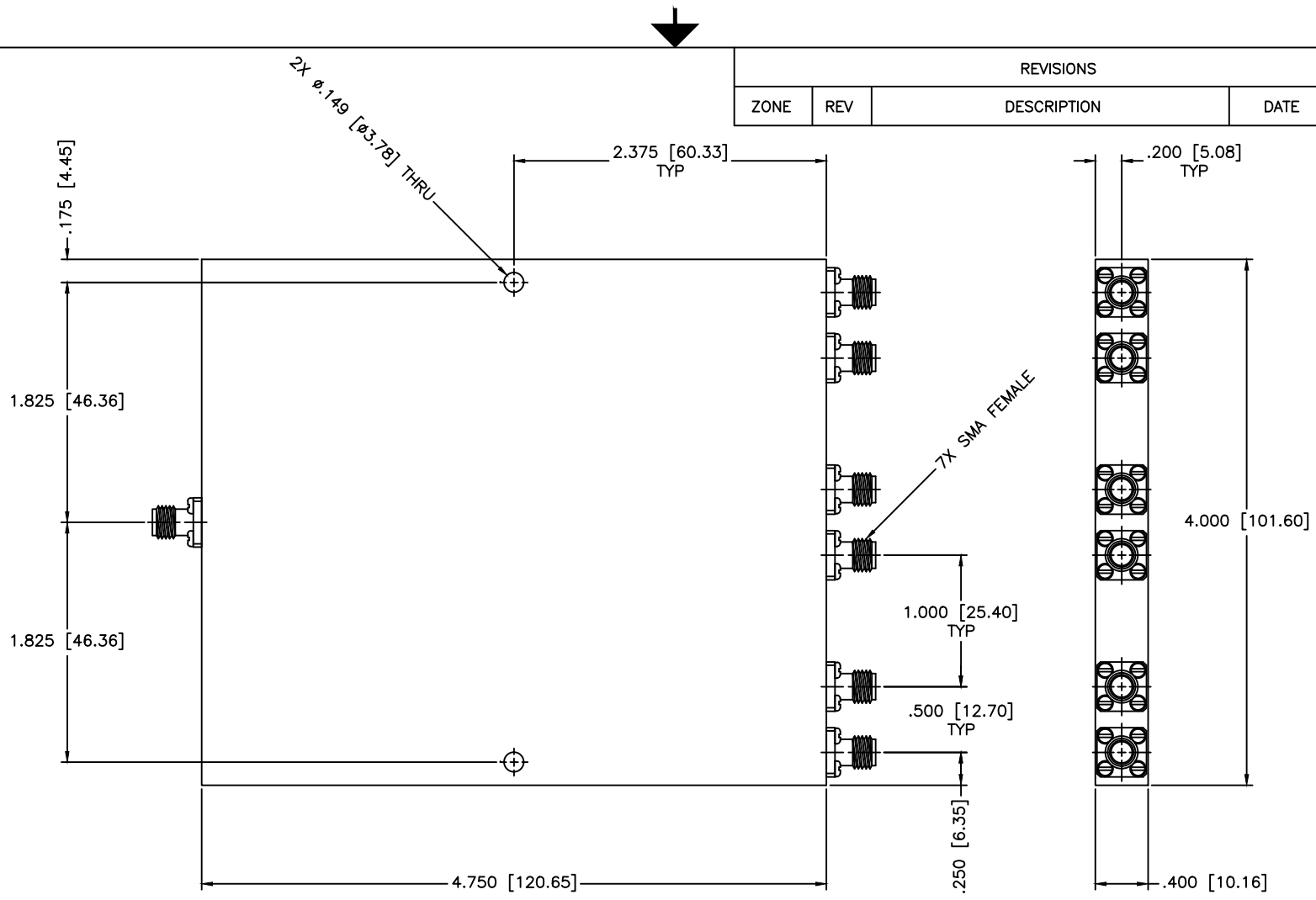


REVISIONS				
ZONE	REV	DESCRIPTION	DATE	APPROVED



SPECIFICATIONS

Frequency Range: 1.8–2.2 GHz
 Insertion Loss: 1.8dB Max.
 Isolation: 18dB Min.
 Phase Balance: $\pm 10^\circ$ Deg. Max.
 Amplitude Balance: ± 1.75 dB Max.
 VSWR In/Out: 1.60:1/1.50:1 Max.
 Input Power: 20W (Load vswr @ 1.2)

MATERIAL:	
DRAWN: Paiboon Luekhamhan	DATE: 01-26-1998
APPROVED: T. Nguyen	DATE: 01-26-1998

	MICROWAVE COMMUNICATIONS LABORATORIES INC. 7255 30TH AVE. N. SAINT PETERSBURG, FL 33710 TEL: (727) 344-6254 FAX: (727) 381-8116 http://www.mcli.com		SCALE:	N/A
	UNLESS OTHERWISE SPECIFIED: TOLERANCES IN (INCHES) OR [mm] (MILLIMETERS) FRACTIONS: $\pm 1/64$ DECIMALS: $\pm .02 \pm .008$ ANGLE: $\pm 1/2^\circ$		SHEET:	N/A
PROPRIETARY NOTICE: THE INFORMATION IN THIS DRAWING IS PROPRIETARY AND SHALL NOT BE USED OR DISCLOSED WITHOUT WRITTEN PERMISSION FROM MICROWAVE COMMUNICATIONS LABORATORIES, INC. (MCLI)		DRAWING TITLE: 6-WAY POWER DIVIDER		
THIRD ANGLE PROJECTION 		PART NO.: PS6-15		
CAGE CODE: 0D2L5	SIZE: N/A	REV: N/A	DWG NO.: 80843	
DO NOT SCALE THE DRAWING				