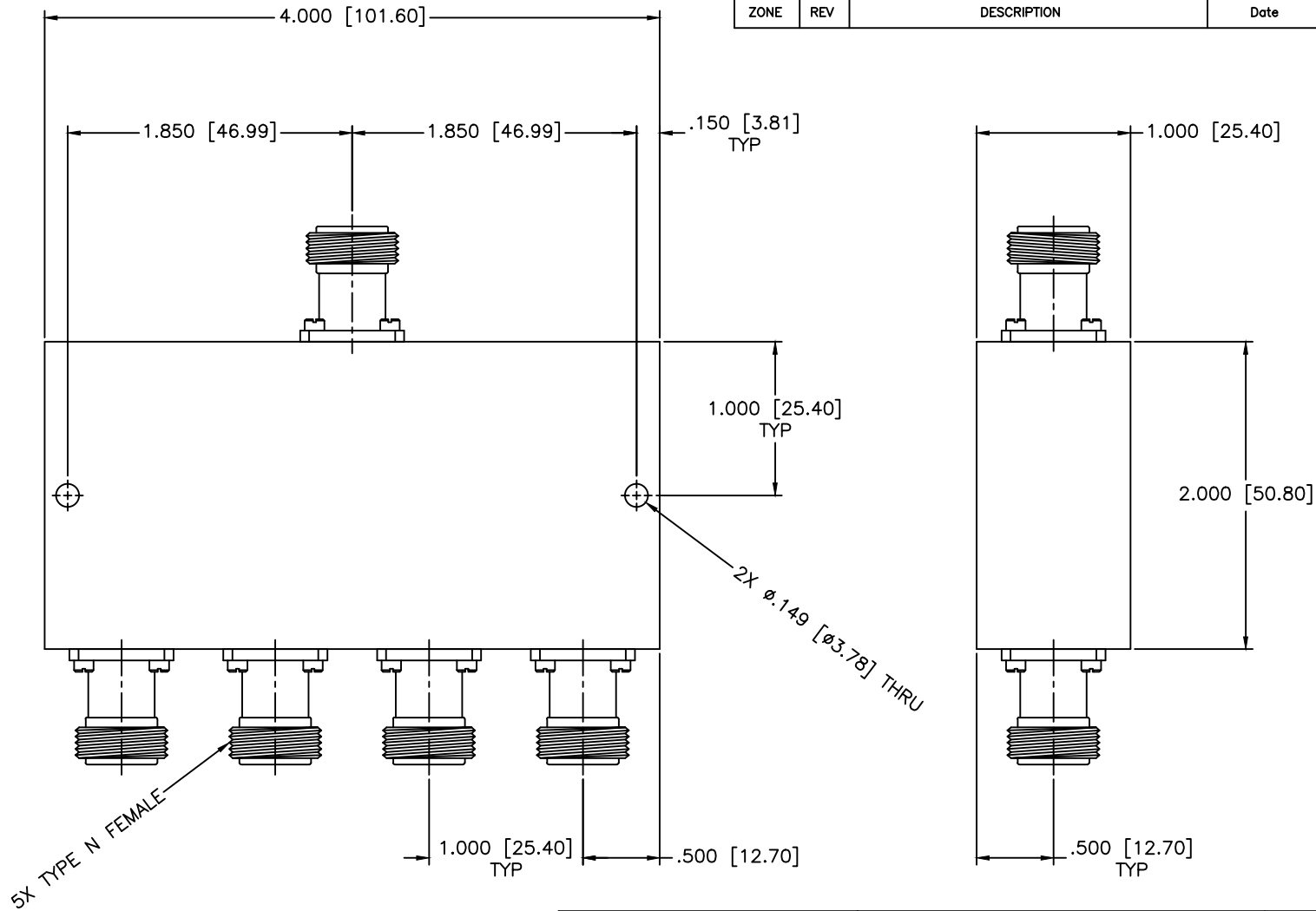


| REVISIONS | | | | |
|-----------|-----|-------------|------|----------|
| ZONE | REV | DESCRIPTION | Date | APPROVED |
| | | | | |



5X TYPE N FEMALE

SPECIFICATIONS

Frequency Range: 0.88–0.96 GHz
 Insertion Loss: 0.7dB Max.
 Isolation: 20dB Min.
 VSWR Input/Output: 1:40:1/1.30:1Max.
 Amplitude Balance: ±0.4dB Max.
 Phase Balance: ±10 Deg. Max.
 Power: 30W (Load VSWR @1.2)

| | | | | |
|---------------------|------------|--|--------------------------|-------|
| MATERIAL: | | MCLI MICROWAVE COMMUNICATIONS LABORATORIES INC. 7255 30TH AVE. N. SAINT PETERSBURG, FL 33710 TEL: (727) 344-8254 FAX: (727) 381-6116 http://www.mcli.com | SCALE: | N/A |
| | | | SHEET: | N/A |
| DRAWING TITLE: | | 4-WAY POWER DIVIDER | | |
| PART NO.: | | PS4-98/NF | | |
| DRAWN: | DATE: | PROPERTY NOTE: THE INFORMATION IN THIS DRAWING IS PROPRIETARY AND SHALL NOT BE USED OR REPRODUCED WITHOUT WRITTEN PERMISSION FROM MICROWAVE COMMUNICATIONS LABORATORIES INC. (MCLI) | CAGE CODE: | SIZE: |
| Pai boon Luekhamhan | 05-27-2009 | THIRD ANGLE PROJECTION | OD2L5 | A |
| APPROVED: | DATE: | | REV: | N/A |
| T. Nguyen | 05-27-2009 | | DO NOT SCALE THE DRAWING | 80566 |