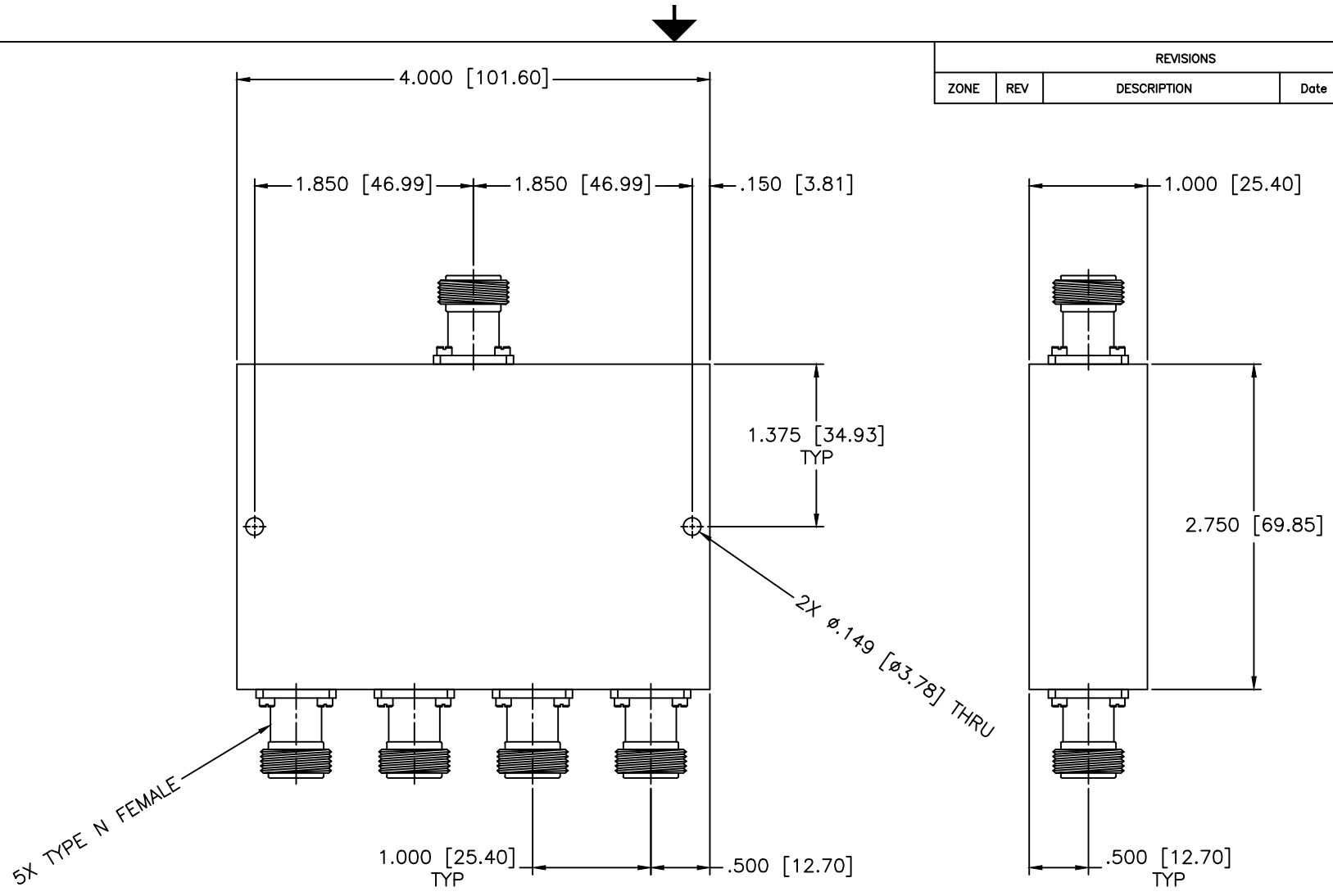


REVISIONS				
ZONE	REV	DESCRIPTION	Date	APPROVED



**SPECIFICATIONS**

Frequency Range: 0.8–3 GHz  
 Isolation: 17dB Min.  
 VSWR In/Out: 1.55/1.45:1 Max.  
 Insertion Loss: 1.0dB Max.  
 Amplitude Balance: ±0.5dB Max.  
 Phase Balance: ±6 Deg. Max.  
 Power: 30 Watts

MATERIAL:	
DRAWN: Paiboon Luekhamhan	DATE: 10-21-2005
APPROVED: T. Nguyen	DATE: 10-21-2005

	MICROWAVE COMMUNICATIONS LABORATORIES INC. 7255 30TH AVE. N. SAINT PETERSBURG, FL 33710 TEL: (727) 344-6254 FAX: (727) 381-6116 http://WWW.MCLI.COM		SCALE: N/A
	UNLESS OTHERWISE SPECIFIED: TOLERANCES IN (INCHES) OR [mm] (MILLIMETERS) FRACTIONS: ± 1/64 DECIMALS: ±.01 ±.005 ANGLE: ±1/2°		SHEET: N/A
DRAWING TITLE: <b>4-WAY POWER DIVIDERS</b>		PART NO.:	
PART NO.: <b>PS4-78/NF/30</b>		CAGE CODE:	
THE INFORMATION IN THIS DRAWING IS PROPRIETARY AND SHALL NOT BE USED OR DISCLOSED WITHOUT WRITTEN PERMISSION FROM MICROWAVE COMMUNICATIONS LABORATORIES INC. (MCLI)		SIZE: A	REV: N/A
THIRD ANGLE PROJECTION 		OD2L5 DO NOT SCALE THE DRAWING	DWG NO. 82433