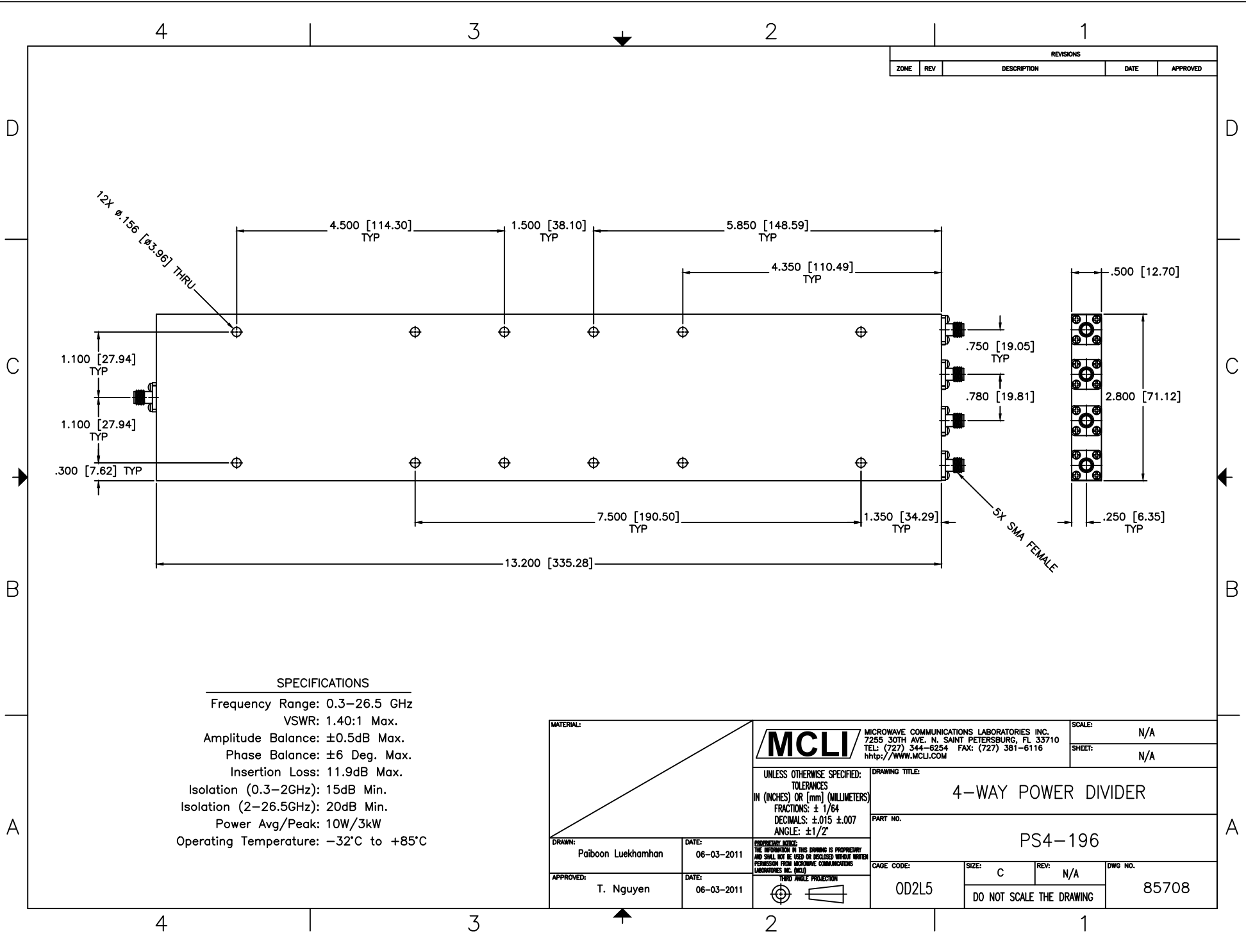


| REVISIONS | | | | |
|-----------|-----|-------------|------|----------|
| ZONE | REV | DESCRIPTION | DATE | APPROVED |
| | | | | |



SPECIFICATIONS

Frequency Range: 0.3–26.5 GHz
 VSWR: 1.40:1 Max.
 Amplitude Balance: ±0.5dB Max.
 Phase Balance: ±6 Deg. Max.
 Insertion Loss: 11.9dB Max.
 Isolation (0.3–2GHz): 15dB Min.
 Isolation (2–26.5GHz): 20dB Min.
 Power Avg/Peak: 10W/3kW
 Operating Temperature: –32°C to +85°C

| | | | | | |
|---|--|---------------------|--|-----------------------------|---------------------------------------|
| MATERIAL: | | | MICROWAVE COMMUNICATIONS LABORATORIES INC. 7255 30TH AVE. N. SAINT PETERSBURG, FL 33710 TEL: (727) 344-6254 FAX: (727) 381-6116 http://WWW.MCLI.COM | | SCALE: N/A |
| UNLESS OTHERWISE SPECIFIED: TOLERANCES IN (INCHES) OR [mm] (MILLIMETERS) FRACTIONS: ± 1/64 DECIMALS: ±0.015 ±0.007 ANGLE: ±1/2° | | | DRAWING TITLE: 4-WAY POWER DIVIDER | | SHEET: N/A |
| DRAWN: Paiboon Luekhamhan | | DATE: 06-03-2011 | | PART NO.: PS4-196 | |
| APPROVED: T. Nguyen | | DATE: 06-03-2011 | | CAGE CODE: OD2L5 | SIZE: C REV: N/A DWG NO.: 85708 |
| PROPRIETARY NOTICE: THE INFORMATION IN THIS DRAWING IS PROPRIETARY AND SHALL NOT BE USED OR DISCLOSED WITHOUT WRITTEN PERMISSION FROM MICROWAVE COMMUNICATIONS LABORATORIES INC. (MCLI) | | | | DO NOT SCALE THE DRAWING | |