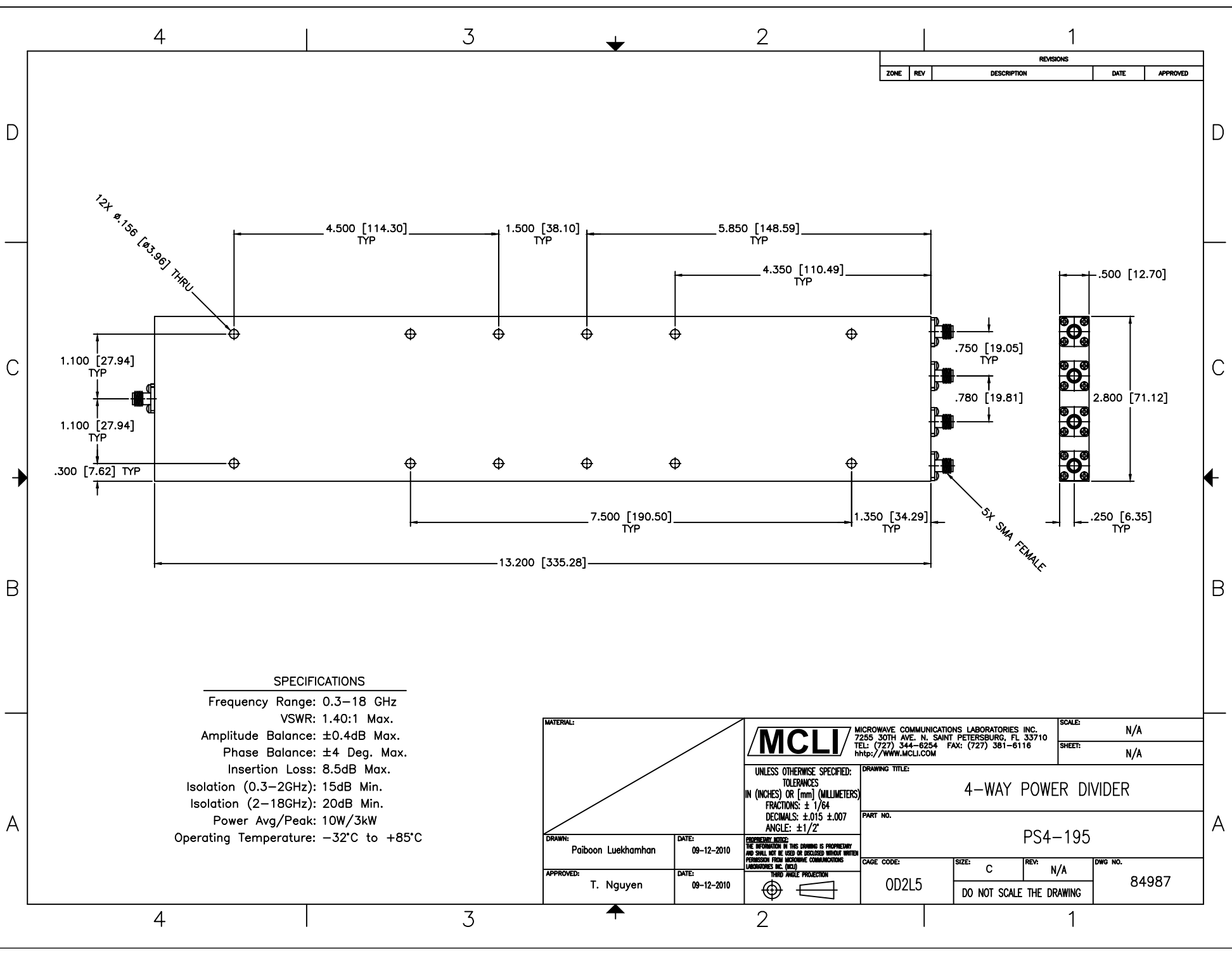


REVISIONS				
ZONE	REV	DESCRIPTION	DATE	APPROVED



SPECIFICATIONS

Frequency Range: 0.3–18 GHz
 VSWR: 1.40:1 Max.
 Amplitude Balance: ±0.4dB Max.
 Phase Balance: ±4 Deg. Max.
 Insertion Loss: 8.5dB Max.
 Isolation (0.3–2GHz): 15dB Min.
 Isolation (2–18GHz): 20dB Min.
 Power Avg/Peak: 10W/3kW
 Operating Temperature: –32°C to +85°C

MATERIAL:		 MICROWAVE COMMUNICATIONS LABORATORIES INC. 7255 30TH AVE. N. SAINT PETERSBURG, FL 33710 TEL: (727) 344-6254 FAX: (727) 381-6116 http://WWW.MCLI.COM	SCALE:	N/A
			SHEET:	N/A
		UNLESS OTHERWISE SPECIFIED: TOLERANCES IN (INCHES) OR [mm] (MILLIMETERS) FRACTIONS: ± 1/64 DECIMALS: ±0.015 ±0.007 ANGLE: ±1/2°	DRAWING TITLE: 4-WAY POWER DIVIDER	
		PROPRIETARY NOTICE: THE INFORMATION IN THIS DRAWING IS PROPRIETARY AND SHALL NOT BE USED OR DISCLOSED WITHOUT WRITTEN PERMISSION FROM MICROWAVE COMMUNICATIONS LABORATORIES INC. (MCLI)	PART NO.: PS4-195	
DRAWN: Paiboon Luekhamhan	DATE: 09-12-2010	 THIRD ANGLE PROJECTION	CAGE CODE:	SIZE: C
APPROVED: T. Nguyen	DATE: 09-12-2010		OD2L5	REV: N/A
			DO NOT SCALE THE DRAWING	