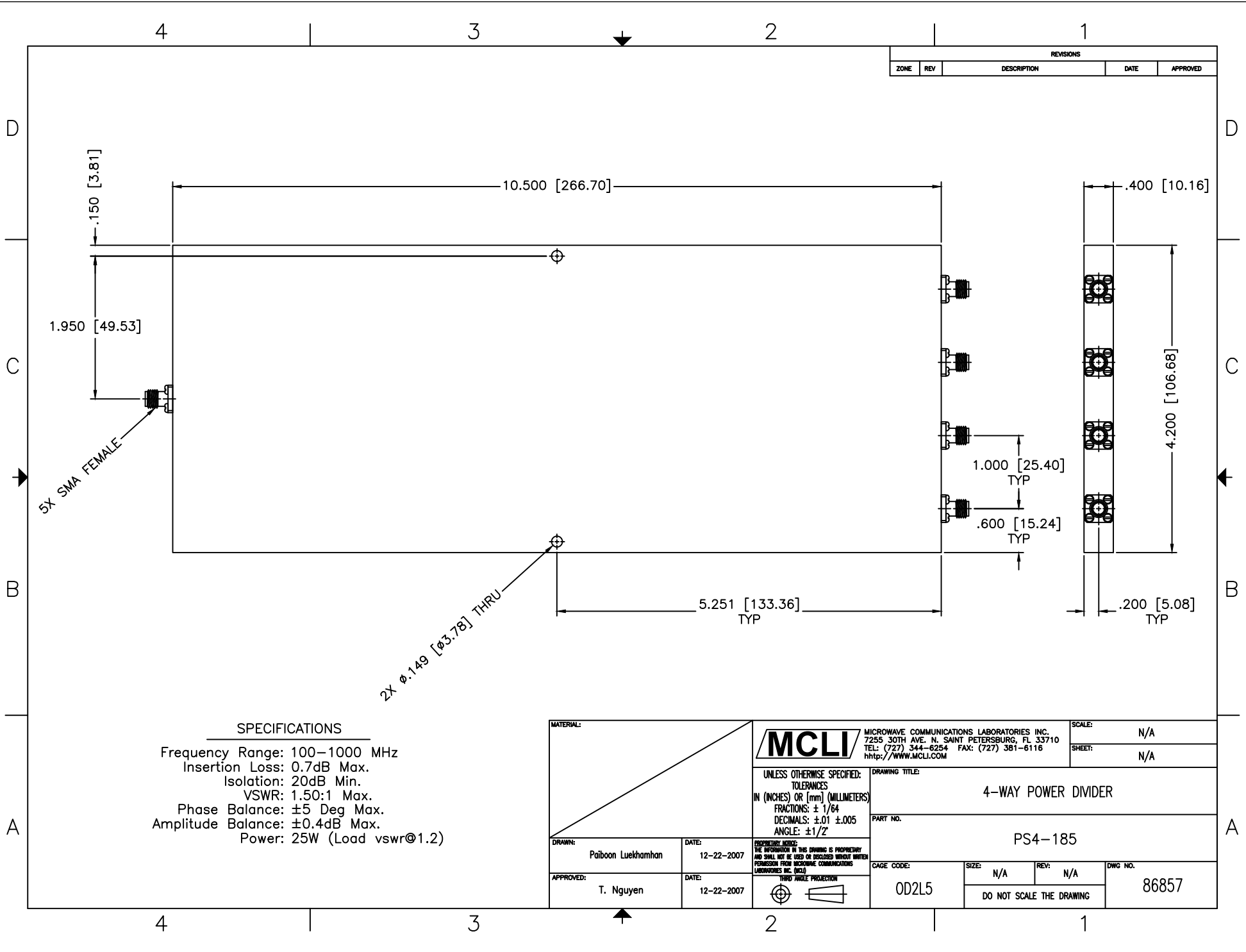


REVISIONS				
ZONE	REV	DESCRIPTION	DATE	APPROVED



SPECIFICATIONS

Frequency Range: 100–1000 MHz
 Insertion Loss: 0.7dB Max.
 Isolation: 20dB Min.
 VSWR: 1.50:1 Max.
 Phase Balance: ±5 Deg Max.
 Amplitude Balance: ±0.4dB Max.
 Power: 25W (Load vswr@1.2)

MATERIAL:		 MCLI MICROWAVE COMMUNICATIONS LABORATORIES INC. 7255 30TH AVE. N. SAINT PETERSBURG, FL 33710 TEL: (727) 344-6254 FAX: (727) 381-6116 http://WWW.MCLI.COM	SCALE:	N/A
			SHEET:	N/A
		UNLESS OTHERWISE SPECIFIED: TOLERANCES IN (INCHES) OR [mm] (MILLIMETERS) FRACTIONS: ± 1/64 DECIMALS: ±.01 ±.005 ANGLE: ±1/2°	DRAWING TITLE: 4-WAY POWER DIVIDER	
DRAWN: Paiboon Luekhamhan		DATE: 12-22-2007	PART NO. PS4-185	
APPROVED: T. Nguyen		DATE: 12-22-2007	CAGE CODE: OD2L5	SIZE: N/A REV: N/A DNG. NO. 86857
		PROPRIETARY NOTICE: THE INFORMATION IN THIS DRAWING IS PROPRIETARY AND SHALL NOT BE USED OR DISCLOSED WITHOUT WRITTEN PERMISSION FROM MICROWAVE COMMUNICATIONS LABORATORIES INC. (MCLI)	DO NOT SCALE THE DRAWING	