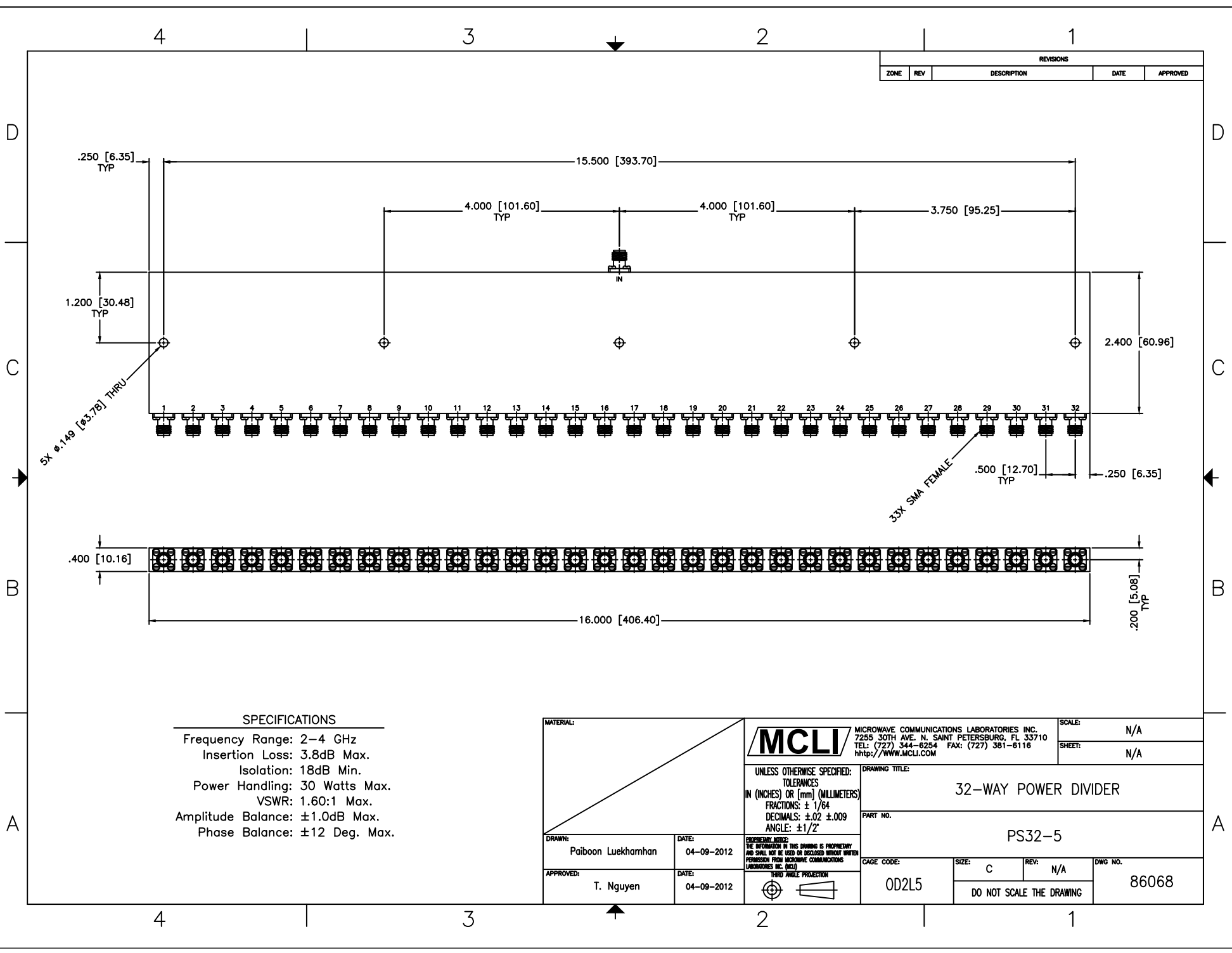


REVISIONS				
ZONE	REV	DESCRIPTION	DATE	APPROVED



SPECIFICATIONS

Frequency Range: 2-4 GHz
 Insertion Loss: 3.8dB Max.
 Isolation: 18dB Min.
 Power Handling: 30 Watts Max.
 VSWR: 1.60:1 Max.
 Amplitude Balance: ±1.0dB Max.
 Phase Balance: ±12 Deg. Max.

MATERIAL:			MICROWAVE COMMUNICATIONS LABORATORIES INC. 7255 30TH AVE. N. SAINT PETERSBURG, FL 33710 TEL: (727) 344-6254 FAX: (727) 381-6116 http://WWW.MCLI.COM		SCALE:	N/A	
UNLESS OTHERWISE SPECIFIED: TOLERANCES IN (INCHES) OR [mm] (MILLIMETERS) FRACTIONS: ± 1/64 DECIMALS: ±.02 ±.009 ANGLE: ±1/2°			DRAWING TITLE:		SHEET:		N/A
DRAWN:		DATE:		PART NO.			PS32-5
Paiboon Luekhamhan		04-09-2012		CAGE CODE:			
APPROVED:		DATE:		SIZE:		86068	
T. Nguyen		04-09-2012		C			
PROPRIETARY NOTICE: THE INFORMATION IN THIS DRAWING IS PROPRIETARY AND SHALL NOT BE USED OR DISCLOSED WITHOUT WRITTEN PERMISSION FROM MICROWAVE COMMUNICATIONS LABORATORIES INC. (MCLI)				REV:		DWG NO.	
THIRD ANGLE PROJECTION				N/A			
				DO NOT SCALE THE DRAWING			