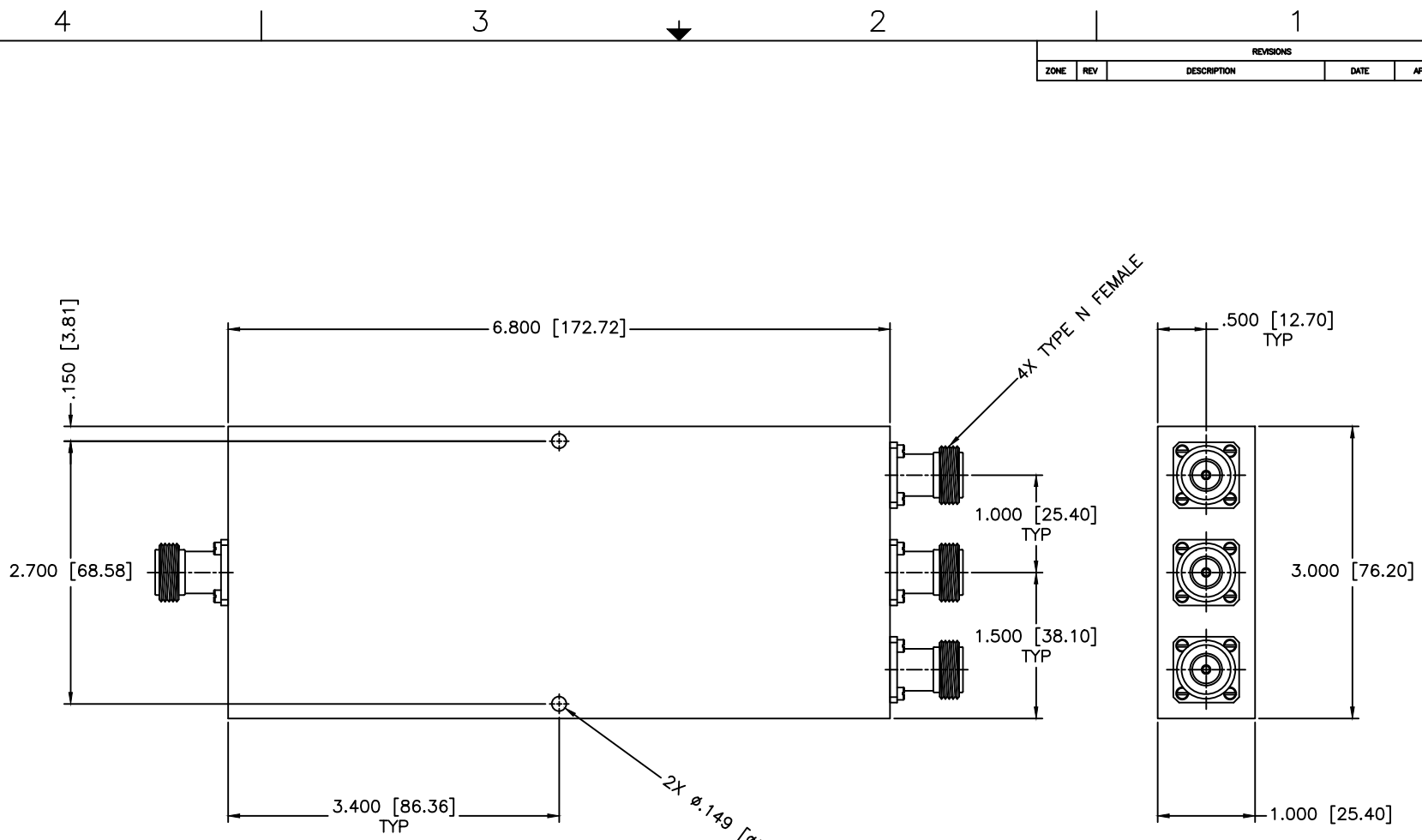


REVISIONS				
ZONE	REV	DESCRIPTION	DATE	APPROVED



SPECIFICATIONS

Frequency Range: 1-2 GHz
 Insertion Loss: 0.6dB Max.
 Isolation: 16dB Min.
 VSWR Input/Output: 1.50:1/1.40:1 Max.
 Phase Balance: ± 8 Deg. Max.
 Amplitude Balance: ± 0.5 dB Max.
 Power: 20W (Load vswr@1.2)

MATERIAL:				MICROWAVE COMMUNICATIONS LABORATORIES INC. 7250 30TH AVE. N. SAINT PETERSBURG, FL 33710 TEL: (727) 544-6254 FAX: (727) 381-8118 http://www.MCLI.COM		SCALE: N/A
UNLESS OTHERWISE SPECIFIED:		TOLERANCES		DRAWING TITLE:		3-WAY POWER DIVIDER
IN (INCHES) OR (mm) (MILLIMETERS)		FRACTIONS: $\pm 1/64$		PART NO.:		PS3-25/NF
DECIMALS: $\pm 0.01 \pm 0.005$		ANGLE: $\pm 1/2^\circ$		CAGE CODE:		OD2L5
DRAWN: Poiboon Luekhamhan		DATE: 10-18-2005		SIZE: N/A		REV: N/A
APPROVED: T. Nguyen		DATE: 10-18-2005		DO NOT SCALE THE DRAWING		DWG NO. 82432