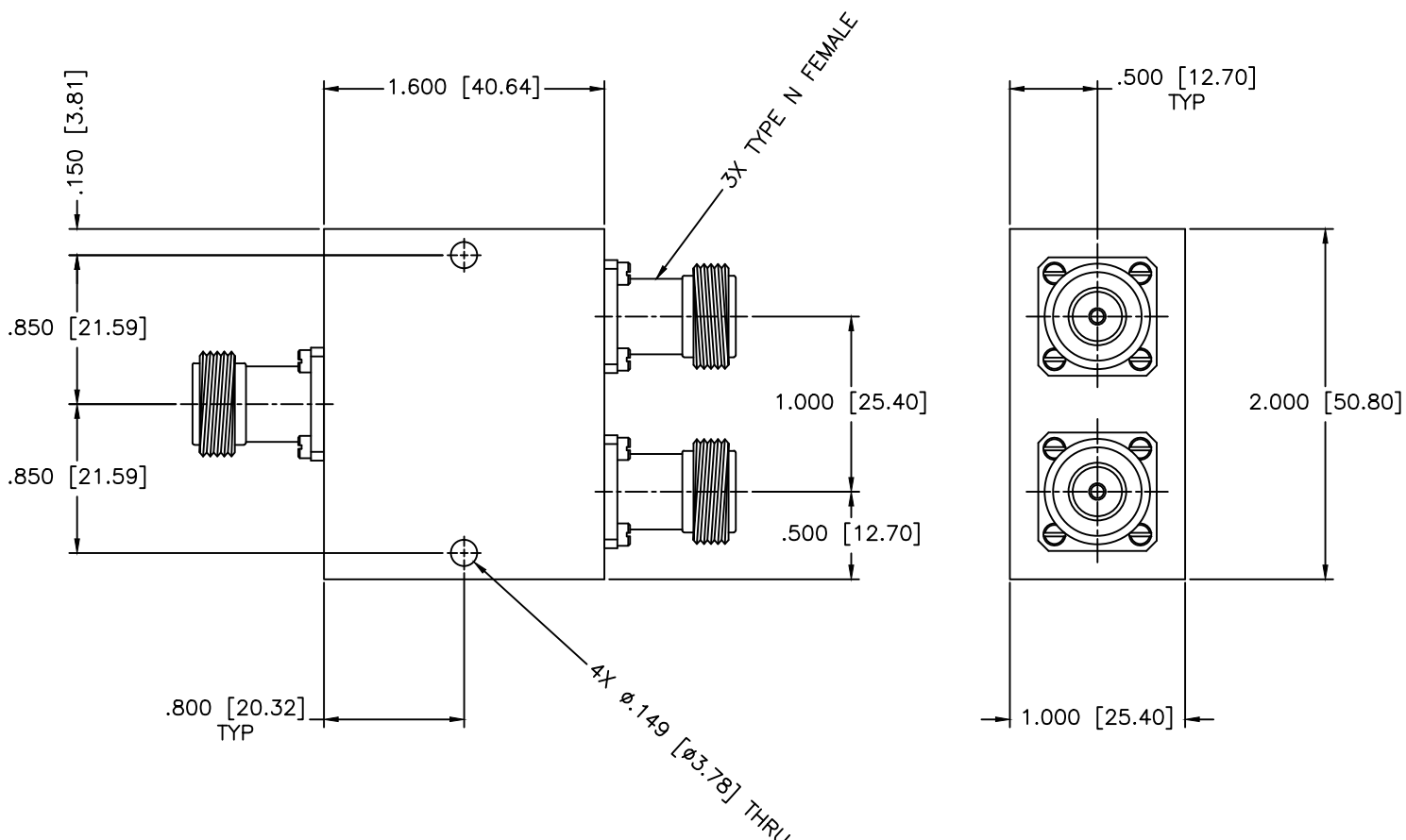


REVISIONS				
ZONE	REV	DESCRIPTION	DATE	APPROVED



SPECIFICATIONS

- Frequency Range: 1.8–2.2 GHz
- Insertion Loss: 0.5dB Max.
- Isolation: 20dB Min.
- VSWR In/Out: 1.30:1/1.25:1 Max.
- Phase Balance: ± 2 Deg. Max.
- Amplitude Balance: ± 0.2 dB Max.
- Power: 30W (Load vswr@1.2)

MATERIAL:			MICROWAVE COMMUNICATIONS LABORATORIES INC. 7255 30TH AVE. N. SAINT PETERSBURG, FL 33710 TEL: (727) 344-6254 FAX: (727) 381-6116 http://WWW.MCLI.COM		SCALE:	N/A
			UNLESS OTHERWISE SPECIFIED: TOLERANCES IN (INCHES) OR [mm] (MILLIMETERS) FRACTIONS: $\pm 1/64$ DECIMALS: $\pm 0.01 \pm 0.005$ ANGLE: $\pm 1/2^\circ$		DRAWING TITLE:	2-WAY POWER DIVIDER
		PROPRIETARY NOTICE: THE INFORMATION IN THIS DRAWING IS PROPRIETARY AND SHALL NOT BE USED OR DISCLOSED WITHOUT WRITTEN PERMISSION FROM MICROWAVE COMMUNICATIONS LABORATORIES INC. (MCLI)		PART NO.	PS2-31/NF	
DRAWN:	DATE:		CAGE CODE:	SIZE:	REV:	DWG NO.
Paiboon Luekhamhan	02-17-1998		OD2L5	A	N/A	80891
APPROVED:	DATE:	DO NOT SCALE THE DRAWING				
T. Nguyen	02-17-1998					