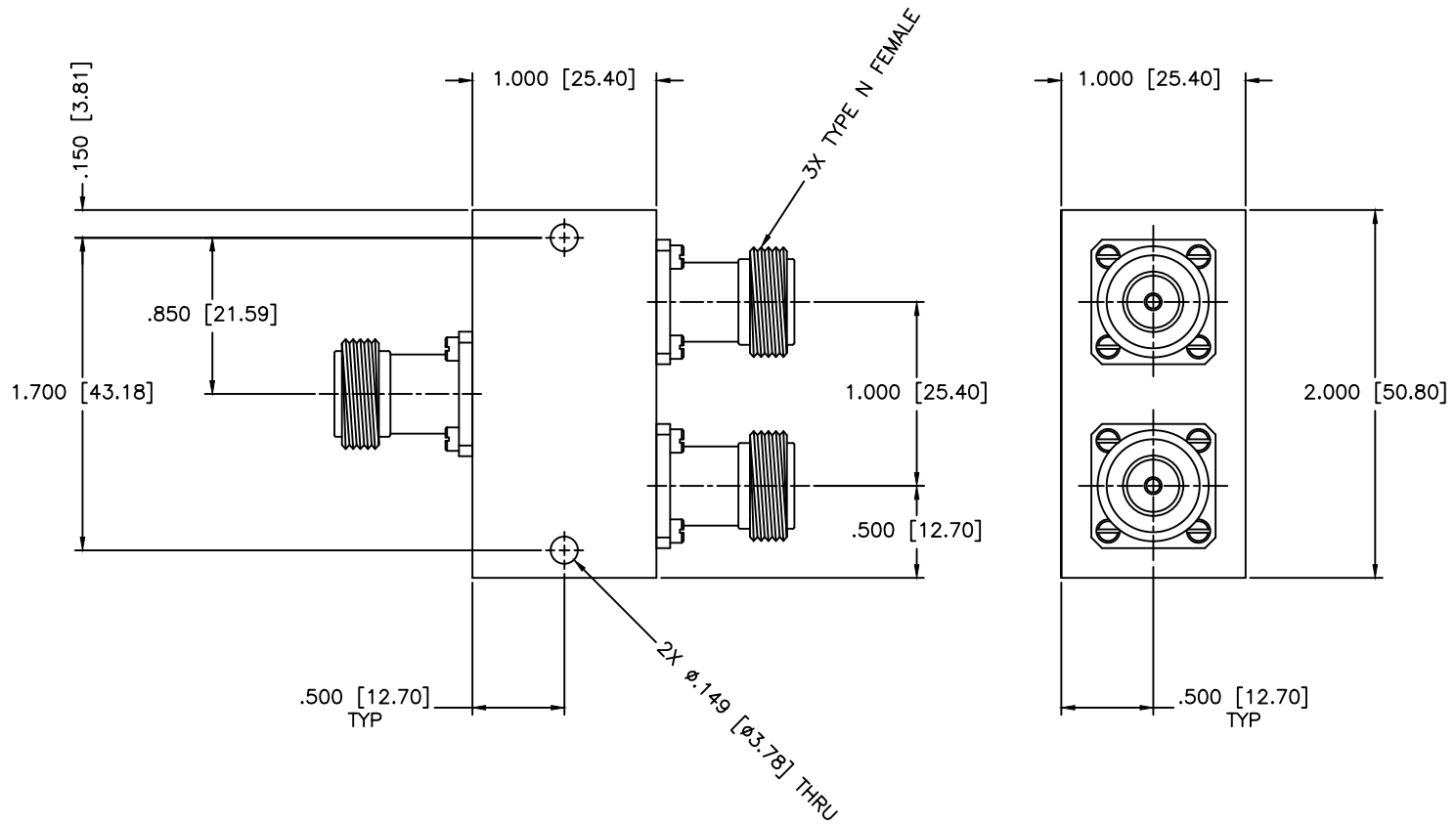


REVISIONS				
ZONE	REV	DESCRIPTION	Date	APPROVED



SPECIFICATIONS

Frequency Range: 1–2 GHz
 Insertion Loss: 0.35dB Max.
 Isolation: 18dB Min.
 VSWR Input/Output: 1.25:1/1.20:1 Max.
 Amplitude Balance: ±0.2dB Max.
 Phase Balance: ±3 Deg. Max.
 Power: 30 Watts

MATERIAL:	
DRAWN: Paiboon Luekhamhan	DATE: 12-07-2007
APPROVED: T. Nguyen	DATE: 12-07-2007



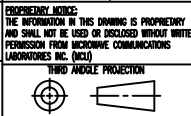
MICROWAVE COMMUNICATIONS LABORATORIES INC.
 7255 30TH AVE. N. SAINT PETERSBURG, FL 33710
 TEL: (727) 344-6254 FAX: (727) 381-6116
 http://www.mcli.com

SCALE:	N/A
SHEET:	N/A

UNLESS OTHERWISE SPECIFIED:
 TOLERANCES
 IN (INCHES) OR [mm] (MILLIMETERS)
 FRACTIONS: ± 1/64
 DECIMALS: ±.01 ±.005
 ANGLE: ±1/2°

DRAWING TITLE:
2-WAY POWER DIVIDER

PART NO.
PS2-2A/NF



CAGE CODE: OD2L5	SIZE: A	REV: N/A	DWG NO. 80060
DO NOT SCALE THE DRAWING			