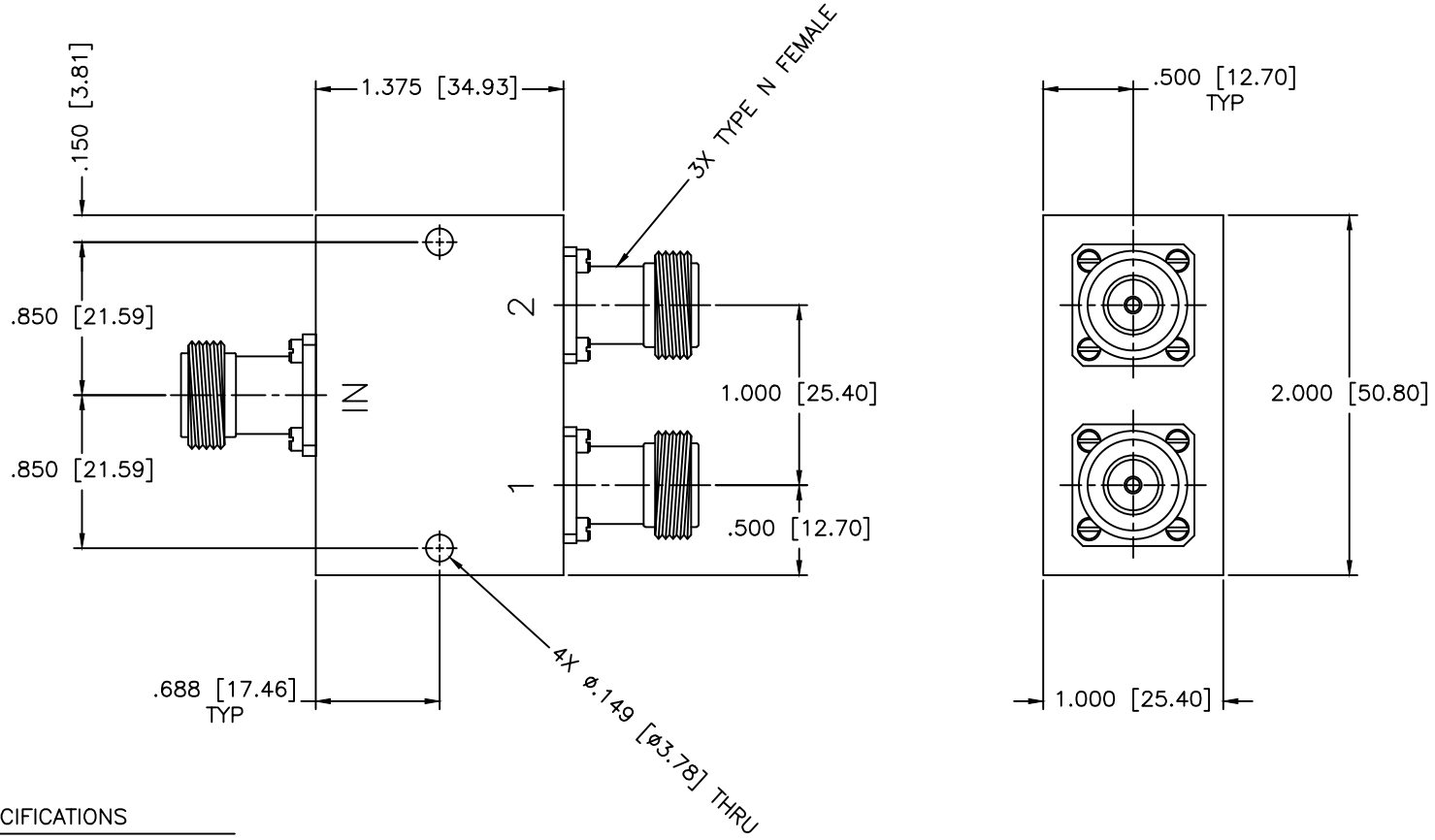


REVISIONS				
ZONE	REV	DESCRIPTION	DATE	APPROVED



SPECIFICATIONS

Frequency Range: 3.625–6.4 GHz
 Insertion Loss: 0.9dB Max.
 Isolation: 20dB Min.
 VSWR In/Out: 1.40:1/1.35:1 Max.
 Phase Balance: ±6 Deg. Max.
 Amplitude Balance: ±0.2dB Max.
 Power: 30W (Load vswr@1.2)
 Storage Temperature: -65°C to +125°C
 Operating Temperature: -55°C to +95°C

MATERIAL:		MICROWAVE COMMUNICATIONS LABORATORIES INC. 7255 30TH AVE. N. SAINT PETERSBURG, FL 33710 TEL: (727) 344-6254 FAX: (727) 381-6116 http://WWW.MCLI.COM	SCALE:	N/A
			SHEET:	N/A
UNLESS OTHERWISE SPECIFIED: TOLERANCES IN (INCHES) OR [mm] (MILLIMETERS) FRACTIONS: ± 1/64 DECIMALS: ±.01 ±.005 ANGLE: ±1/2°		DRAWING TITLE: 2-WAY POWER DIVIDER		
DRAWN: Paiboon Luekhamhan		PART NO. PS2-24/NF		
DATE: 04-24-2012		CAGE CODE: OD2L5		
APPROVED: T. Nguyen		SIZE: A		
DATE: 04-24-2012		REV: N/A		
THIRD ANGLE PROJECTION		DWG NO. 80811		
		DO NOT SCALE THE DRAWING		