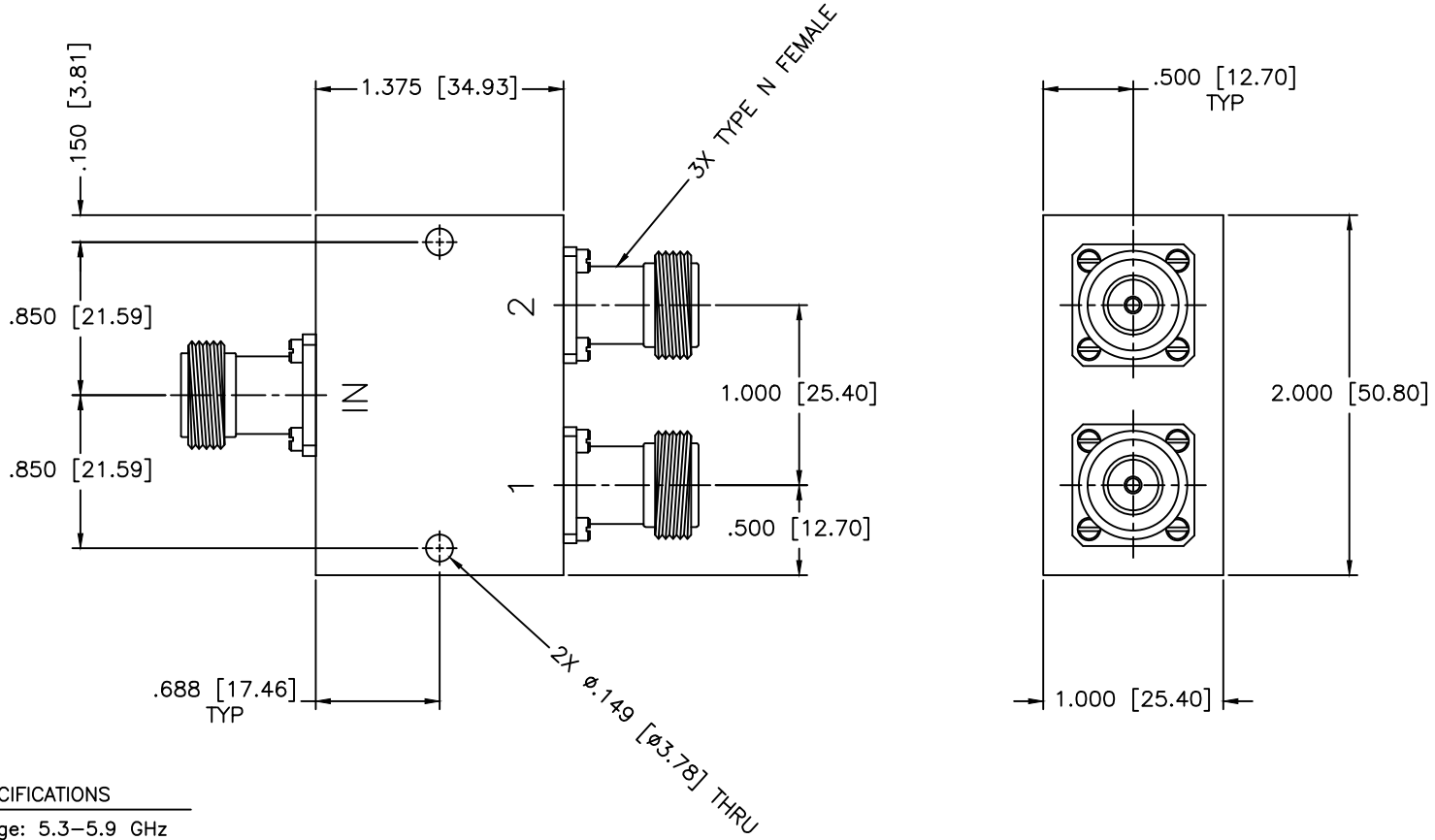


REVISIONS				
ZONE	REV	DESCRIPTION	DATE	APPROVED



SPECIFICATIONS

- Frequency Range: 5.3–5.9 GHz
- Insertion Loss: 0.40dB Max.
- Isolation: 20dB Min.
- VSWR In/Out: 1.40:1/1.35:1 Max.
- Amplitude Balance: ± 0.2 dB Max.
- Phase Balance: ± 6 Deg. Max.
- Storage Temperature: -65°C to $+125^{\circ}\text{C}$
- Operating Temperature: -55°C to $+95^{\circ}\text{C}$
- Power: 60W (Load vswr@1.2)

MATERIAL:			MICROWAVE COMMUNICATIONS LABORATORIES INC. 7255 30TH AVE. N. SAINT PETERSBURG, FL 33710 TEL: (727) 344-6254 FAX: (727) 381-6116 http://WWW.MCLI.COM		SCALE:	N/A
UNLESS OTHERWISE SPECIFIED: TOLERANCES IN (INCHES) OR [mm] (MILLIMETERS) FRACTIONS: $\pm 1/64$ DECIMALS: $\pm 0.01 \pm 0.005$ ANGLE: $\pm 1/2^{\circ}$			DRAWING TITLE:		SHEET:	N/A
DRAWN:		PART NO.		2-WAY POWER DIVIDER		
DATE:		CAGE CODE:		PS2-24-60/NF		
APPROVED:		SIZE:		DWG NO.		
T. Nguyen		A		84477		
DATE:		REV:		DO NOT SCALE THE DRAWING		
05-11-1999		N/A				
THIRD ANGLE PROJECTION		OD2L5				