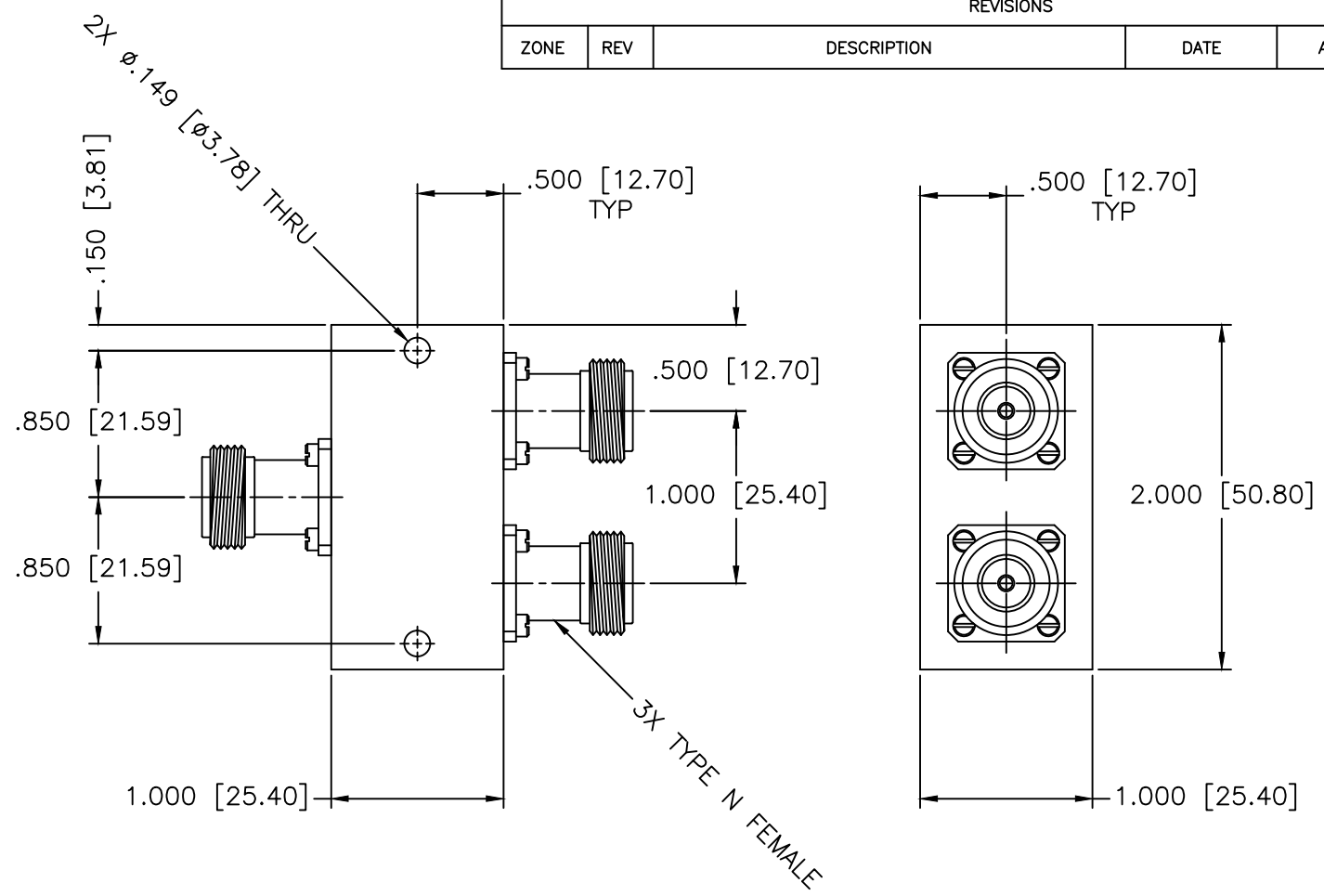


REVISIONS				
ZONE	REV	DESCRIPTION	DATE	APPROVED



**SPECIFICATIONS**

Frequency Range: 7–9 GHz  
 Insertion Loss: 0.5dB Max.  
 Isolation: 17dB Min.  
 VSWR: 1.40:1 Max.  
 Phase Balance: ±4 Deg. Max.  
 Amplitude Balance: 0.4dB Max.  
 Power: 30W (Load vswr@1.2)

MATERIAL:			MICROWAVE COMMUNICATIONS LABORATORIES INC. 7255 30TH AVE. N. SAINT PETERSBURG, FL 33710 TEL: (727) 344-6254 FAX: (727) 381-6116 http://WWW.MCLI.COM		SCALE: N/A
UNLESS OTHERWISE SPECIFIED: TOLERANCES IN (INCHES) OR [mm] (MILLIMETERS) FRACTIONS: ± 1/64 DECIMALS: ±.01 ±.005 ANGLE: ±1/2°			DRAWING TITLE: 2-WAY POWER DIVIDER		SHEET: N/A
PROPRIETARY NOTICE: THE INFORMATION IN THIS DRAWING IS PROPRIETARY AND SHALL NOT BE USED OR DISCLOSED WITHOUT WRITTEN PERMISSION FROM MICROWAVE COMMUNICATIONS LABORATORIES INC. (MCLI)		PART NO. PS2-145/NF			
DRAWN: Paiboon Luekhamhan	DATE: 01-14-2009	CAGE CODE: OD2L5	SIZE: A	REV: N/A	DWG NO. 84054
APPROVED: T. Nguyen	DATE: 01-14-2009	THIRD ANGLE PROJECTION		DO NOT SCALE THE DRAWING	