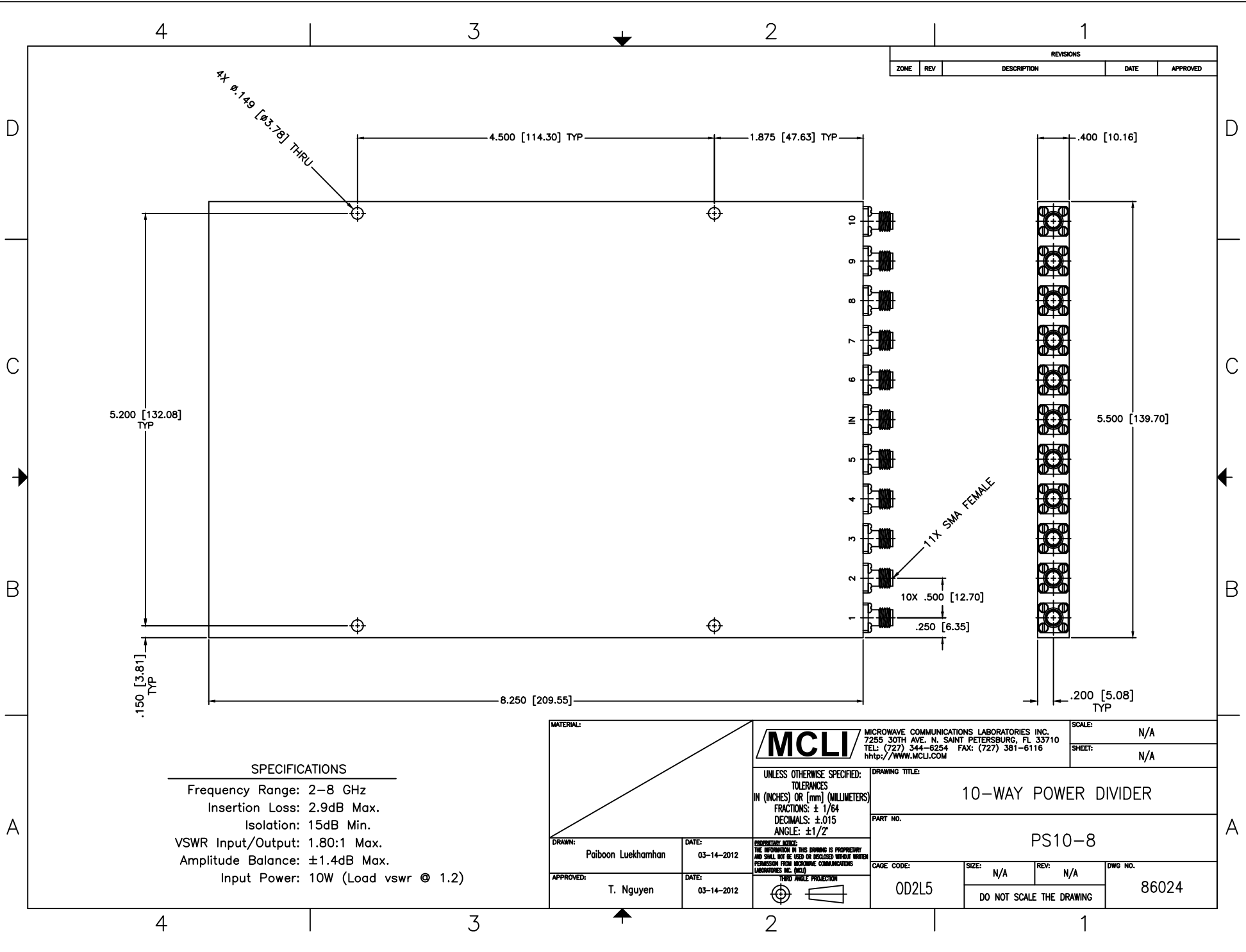


REVISIONS				
ZONE	REV	DESCRIPTION	DATE	APPROVED



**SPECIFICATIONS**

Frequency Range: 2–8 GHz  
 Insertion Loss: 2.9dB Max.  
 Isolation: 15dB Min.  
 VSWR Input/Output: 1.80:1 Max.  
 Amplitude Balance: ±1.4dB Max.  
 Input Power: 10W (Load vswr @ 1.2)

MATERIAL:			MICROWAVE COMMUNICATIONS LABORATORIES INC. 7255 30TH AVE. N. SAINT PETERSBURG, FL 33710 TEL: (727) 344-6254 FAX: (727) 381-6116 http://WWW.MCLI.COM		SCALE: N/A
DRAWN: Paiboon Luekhamhan	DATE: 03-14-2012		UNLESS OTHERWISE SPECIFIED: TOLERANCES IN (INCHES) OR [mm] (MILLIMETERS) FRACTIONS: ± 1/64 DECIMALS: ±.015 ANGLE: ±1/2°	DRAWING TITLE: <b>10-WAY POWER DIVIDER</b>	
APPROVED: T. Nguyen	DATE: 03-14-2012	PROPRIETARY NOTICE: THE INFORMATION IN THIS DRAWING IS PROPRIETARY AND SHALL NOT BE USED OR DISCLOSED WITHOUT WRITTEN PERMISSION FROM MICROWAVE COMMUNICATIONS LABORATORIES INC. (MCLI)	PART NO.: <b>PS10-8</b>		
THIRD ANGLE PROJECTION		CAGE CODE: OD2L5	SIZE: N/A	REV: N/A	DWG NO.: 86024

DO NOT SCALE THE DRAWING