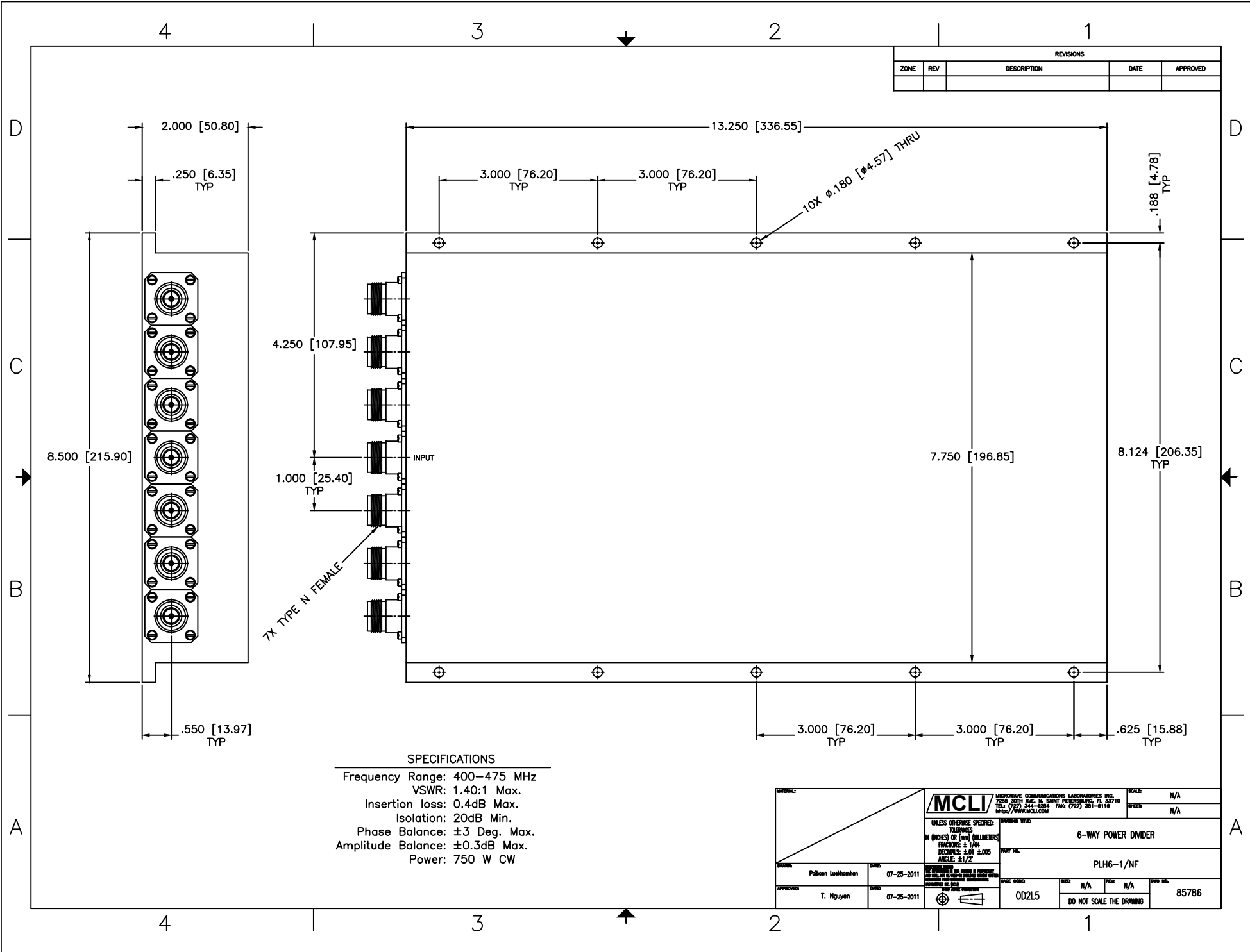


| REVISIONS | | | | |
|-----------|-----|-------------|------|----------|
| ZONE | REV | DESCRIPTION | DATE | APPROVED |
| | | | | |



7X TYPE N FEMALE

SPECIFICATIONS

Frequency Range: 400–475 MHz
 VSWR: 1.40:1 Max.
 Insertion loss: 0.4dB Max.
 Isolation: 20dB Min.
 Phase Balance: ±3 Deg. Max.
 Amplitude Balance: ±0.3dB Max.
 Power: 750 W CW

| | | | | |
|--|---|--|--------------------------|--------------------------|
| | | MICROPHONE COMMUNICATIONS LABORATORIES INC. 2200 30TH AVE. N. SAINT PETERSBURG, FL 33710 TEL: (727) 344-8824 FAX: (727) 381-8118 WWW.MCL1.COM | | SCALE: N/A SHEET: N/A |
| UNLESS OTHERWISE SPECIFIED: DIMENSIONS IN (INCHES) OR (MILLIMETERS) FRACTIONS: ± 1/64 DECIMALS: ±0.005 ANGLES: ±1/2° | | DRAWING TITLE: 6-WAY POWER DIVIDER PART NO.: PLH6-1/NF | | |
| DESIGNED: Puloon Luukkainen DATE: 07-25-2011 | APPROVED: T. Nguyen DATE: 07-25-2011 | CASE CODE: 002L5 SIZE: N/A PART: N/A DRAW NO.: 85786 | DO NOT SCALE THE DRAWING | |