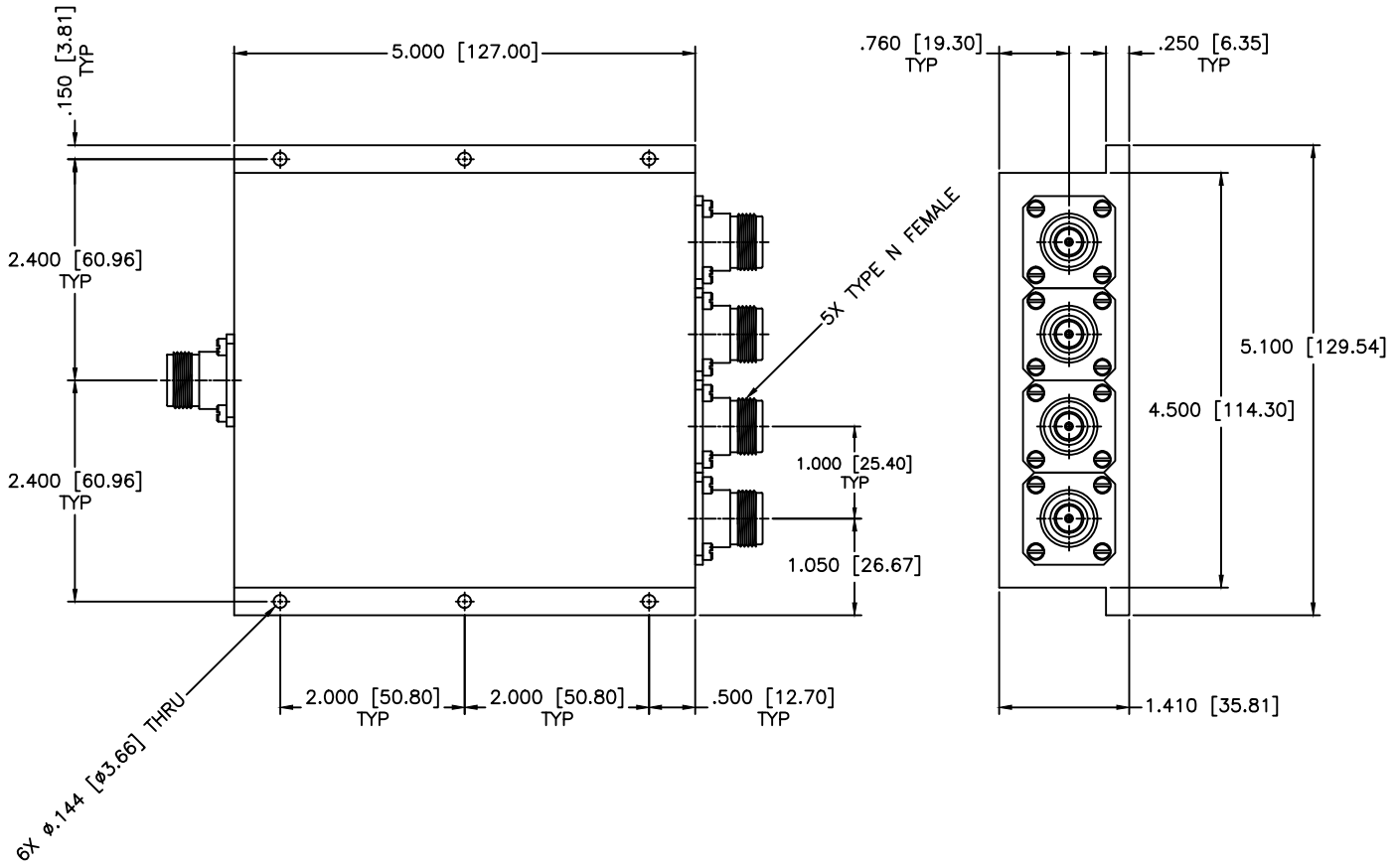


REVISIONS				
ZONE	REV	DESCRIPTION	DATE	APPROVED



SPECIFICATIONS

Frequency Range: 20–500 MHz
 Insertion Loss: 0.5dB Max.
 Isolation: 20dB Min.
 Power: 400 W CW
 Amplitude Balance: ± 0.25 dB Max.
 VSWR: 1.35:1 Max.
 Phase Balance: ± 5 Deg Max.

MATERIAL:				MICROWAVE COMMUNICATIONS LABORATORIES INC. 7250 30TH AVE. N. SAINT PETERSBURG, FL 33710 TEL: (727) 544-6254 FAX: (727) 381-8110 http://www.mcli.com		SCALE: N/A
UNLESS OTHERWISE SPECIFIED: TOLERANCES IN (INCHES) OR (mm) (MILLIMETERS) FRACTIONS: $\pm 1/64$ DECIMALS: $\pm 0.01 \pm 0.005$ ANGLE: $\pm 1/2^\circ$		DRAWING TITLE:		4-WAY POWER DIVIDER/COMBINER		SHEET: N/A
DRAWN: Paiboon Luethamhan		DATE: 02-04-2011		PART NO. PLH4-11-400		
APPROVED: T. Nguyen		DATE: 02-04-2011		CAGE CODE: OD2L5		
				SIZE: C REV: N/A DWG NO.: 85348 DO NOT SCALE THE DRAWING		