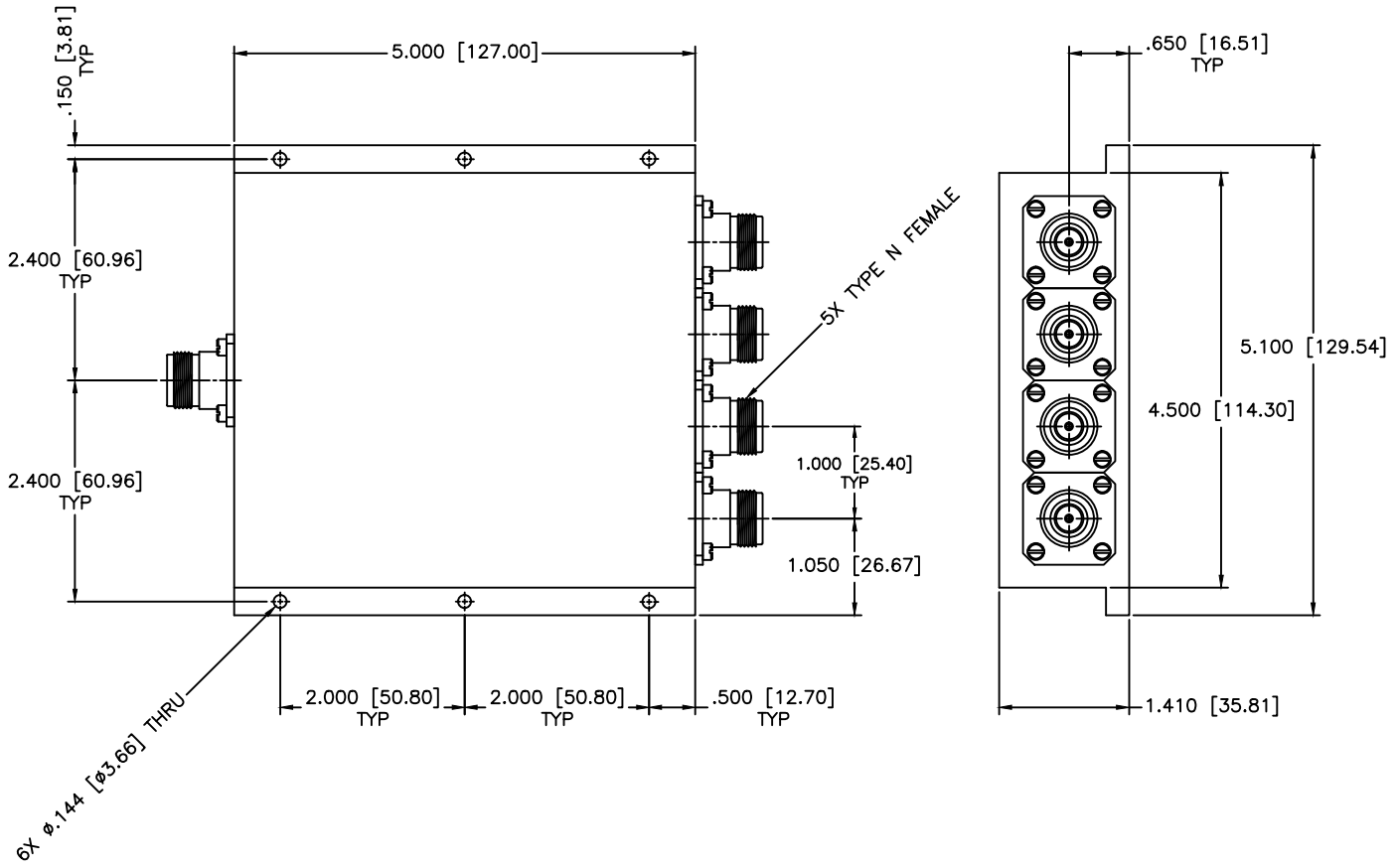


REVISIONS				
ZONE	REV	DESCRIPTION	DATE	APPROVED



SPECIFICATIONS

Frequency Range: 20-500 MHz
 Insertion Loss: 0.50dB Max.
 Isolation: 20dB Min.
 Power: 200 W CW
 Amplitude Balance: ±0.25dB Max.
 VSWR: 1.35:1 Max.
 Phase Balance: ±5 Deg Max.

MATERIAL:				MICROWAVE COMMUNICATIONS LABORATORIES INC. 7250 30TH AVE. N. SAINT PETERSBURG, FL 33710 TEL: (727) 544-6254 FAX: (727) 381-0110 http://www.mcli.com		SCALE: N/A SHEET: N/A	
UNLESS OTHERWISE SPECIFIED: TOLERANCES IN (INCHES) OR (mm) (MILLIMETERS) FRACTIONS: ± 1/64 DECIMALS: ±.01 ±.005 ANGLE: ±1/2°		DRAWING TITLE: 4-WAY POWER DIVIDER/COMBINER					
DRAWN BY: Paiboon Luakhamhan		DATE: 02-07-2011		PART NO. PLH4-11-200			
APPROVED BY: T. Nguyen		DATE: 02-07-2011		CAGE CODE: OD2L5		SIZE: N/A	
				REV: N/A		DWG NO. 85363	
DO NOT SCALE THE DRAWING							