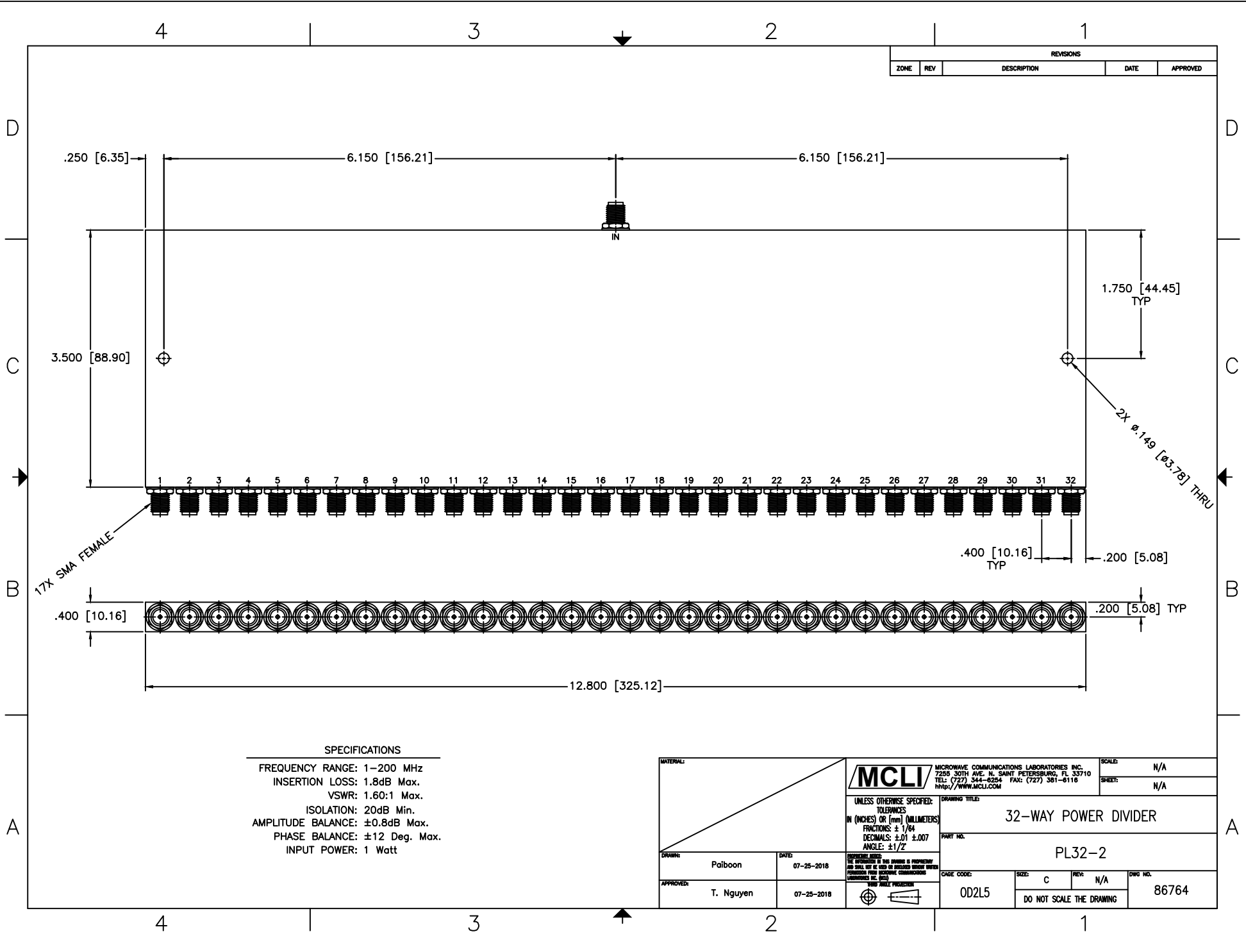


REVISIONS				
ZONE	REV	DESCRIPTION	DATE	APPROVED



SPECIFICATIONS

FREQUENCY RANGE: 1-200 MHz
 INSERTION LOSS: 1.8dB Max.
 VSWR: 1.60:1 Max.
 ISOLATION: 20dB Min.
 AMPLITUDE BALANCE: ±0.8dB Max.
 PHASE BALANCE: ±12 Deg. Max.
 INPUT POWER: 1 Watt

MATERIAL:		MCLI MICROWAVE COMMUNICATIONS LABORATORIES INC. 7250 30TH AVE. N. SAINT PETERSBURG, FL 33710 TEL: (727) 544-6254 FAX: (727) 381-8118 http://www.mcli.com		SCALE: N/A
				SHEET: N/A
UNLESS OTHERWISE SPECIFIED: TOLERANCES IN (INCHES) OR (mm) (MILLIMETERS) FRACTIONS: ± 1/64 DECIMALS: ±.01 ±.007 ANGLE: ±1/2°		DRAWING TITLE: 32-WAY POWER DIVIDER		
		PART NO.: PL32-2		
DRAWN: Paiboon	DATE: 07-25-2018	CAGE CODE: OD2L5	SIZE: C REV: N/A DO NOT SCALE THE DRAWING	
APPROVED: T. Nguyen	DATE: 07-25-2018		DWG NO.: 86764	