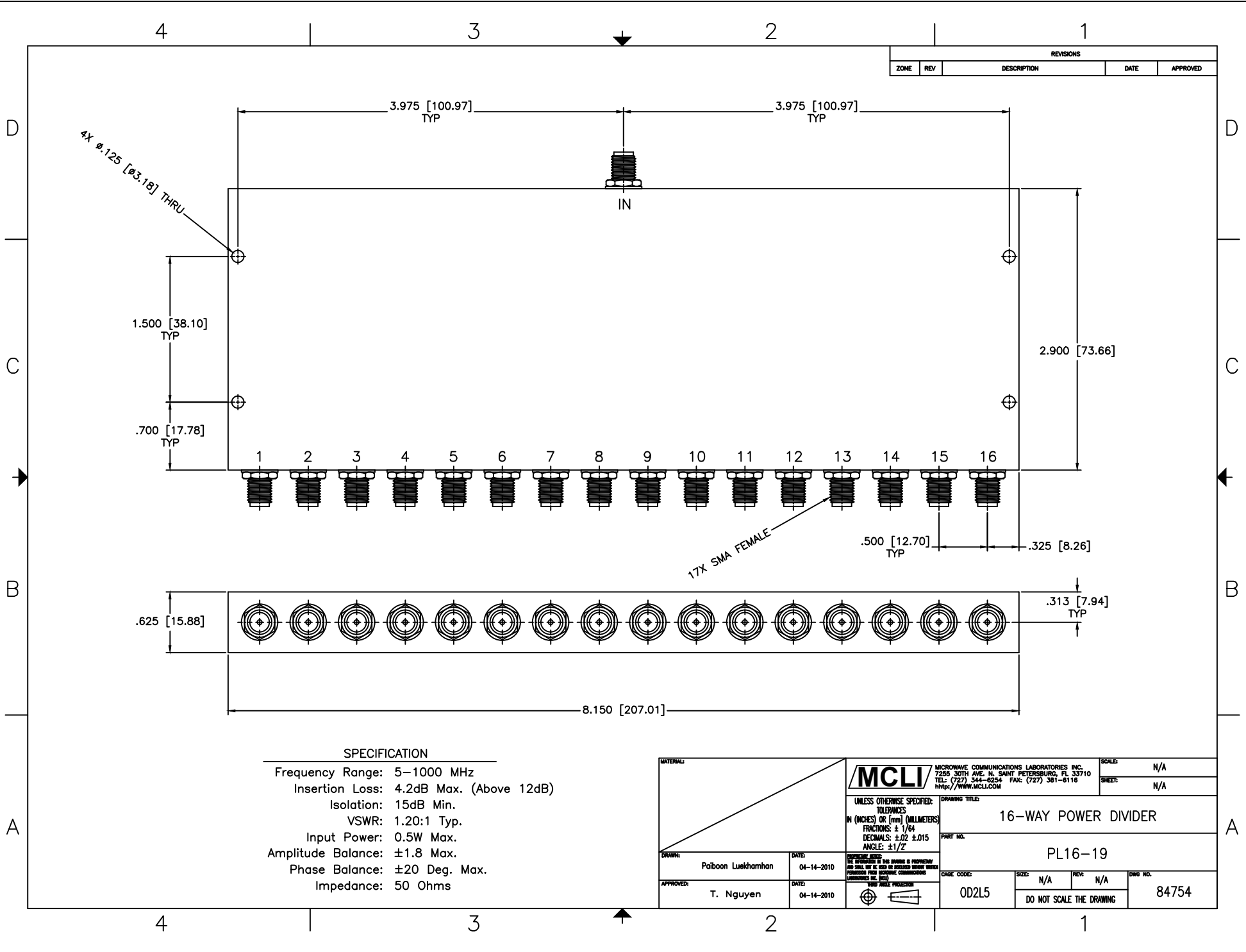


REVISIONS				
ZONE	REV	DESCRIPTION	DATE	APPROVED



**SPECIFICATION**

Frequency Range: 5–1000 MHz  
 Insertion Loss: 4.2dB Max. (Above 12dB)  
 Isolation: 15dB Min.  
 VSWR: 1.20:1 Typ.  
 Input Power: 0.5W Max.  
 Amplitude Balance: ±1.8 Max.  
 Phase Balance: ±20 Deg. Max.  
 Impedance: 50 Ohms

MATERIAL:	DRAWN: Paiboon Luekhamhan	DATE: 04-14-2010	<b>MCL</b> MICROWAVE COMMUNICATIONS LABORATORIES INC. 7250 30TH AVE. N. SAINT PETERSBURG, FL 33710 TEL: (727) 544-6254 FAX: (727) 381-0110 http://www.mcll.com	SCALE: N/A
				SHEET: N/A
APPROVED: T. Nguyen	DATE: 04-14-2010	UNLESS OTHERWISE SPECIFIED: TOLERANCES IN (INCHES) OR (mm) (MILLIMETERS) FRACTIONS: ± 1/64 DECIMALS: ± .02 ± .015 ANGLE: ± 1/2°	DRAWING TITLE: 16-WAY POWER DIVIDER	
			PART NO.: PL16-19	
THE INFORMATION ON THIS DRAWING IS PROPRIETARY AND SHALL NOT BE REPRODUCED OR TRANSMITTED IN ANY FORM OR BY ANY MEANS, ELECTRONIC OR MECHANICAL, INCLUDING PHOTOCOPYING, RECORDING, OR BY ANY INFORMATION STORAGE AND RETRIEVAL SYSTEM.			CAGE CODE: OD2L5	SIZE: N/A
			REV: N/A	DWG NO.: 84754
			DO NOT SCALE THE DRAWING	