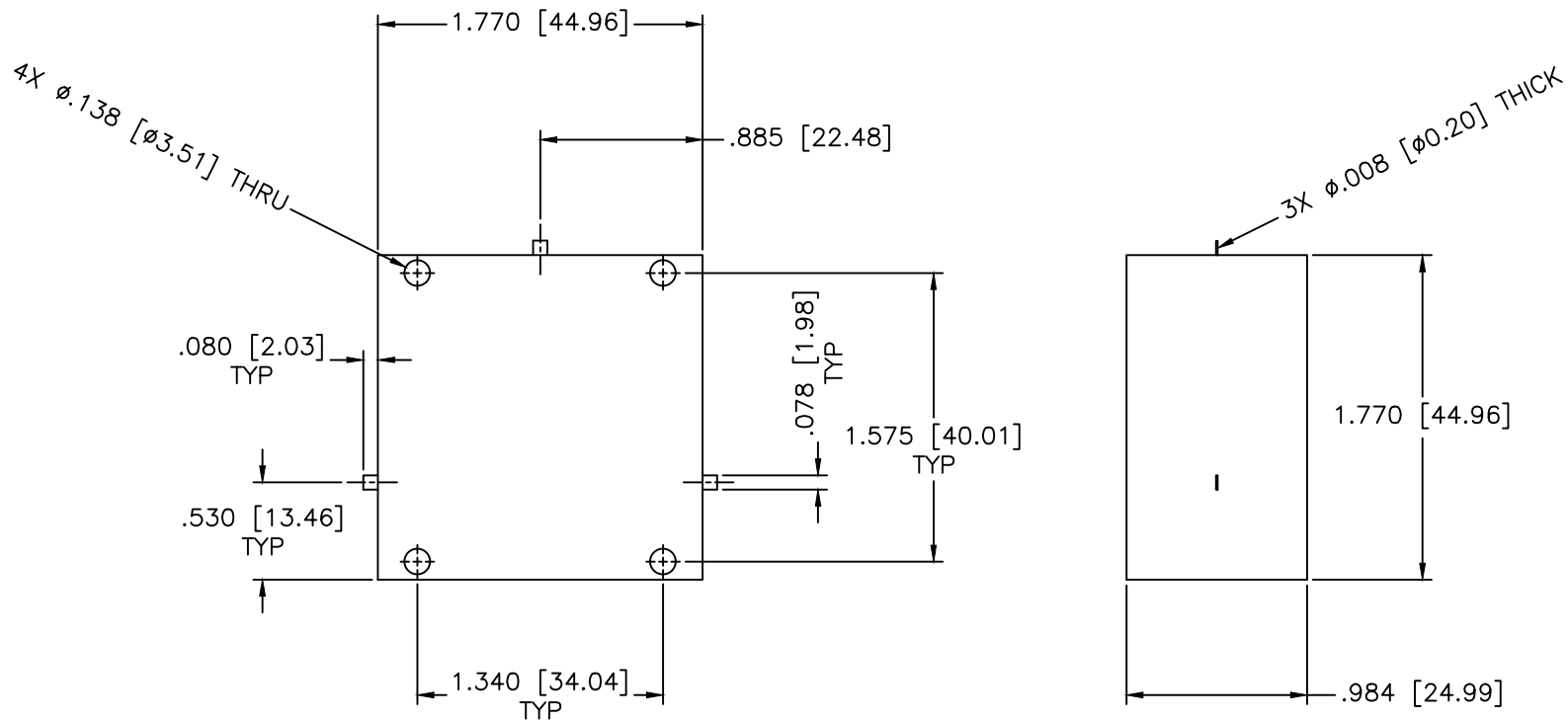


MCLI MODEL NUMBER	FREQUENCY RANGE (MHz)	INSERTION LOSS (dB Max.)	REVERSE ISOLATOR (dB Min.)	VSWR Max.	FORWARD POWER (Watts)	TEMPERATURE RANGE (Deg. C)
ML-6	180-210	0.7	18	1.25:1	20	-25 to +70
ML-7	250-270	0.7	18	1.25:1	20	-25 to +70

REVISIONS				
ZONE	REV	DESCRIPTION	Date	APPROVED



MATERIAL:	
DRAWN: Paiboon Luekhamhan	DATE: 08-03-2011
APPROVED: T. Nguyen	DATE: 08-03-2011



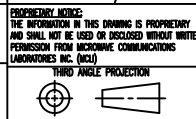
MICROWAVE COMMUNICATIONS LABORATORIES INC.  
7255 30TH AVE. N. SAINT PETERSBURG, FL 33710  
TEL: (727) 344-6254 FAX: (727) 381-6116  
http://WWW.MCLI.COM

SCALE:	N/A
SHEET:	N/A

UNLESS OTHERWISE SPECIFIED:  
TOLERANCES  
IN (INCHES) OR [mm] (MILLIMETERS)  
FRACTIONS: ± 1/64  
DECIMALS: ± .01 ± .005  
ANGLE: ± 1/2°

DRAWING TITLE:  
LUMPED ELEMENT COAXIAL CIRCULATOR

PART NO.  
ML-6 & ML-7



CAGE CODE:	SIZE:	REV:	DWG. NO.
OD2L5	A	N/A	85802
DO NOT SCALE THE DRAWING			