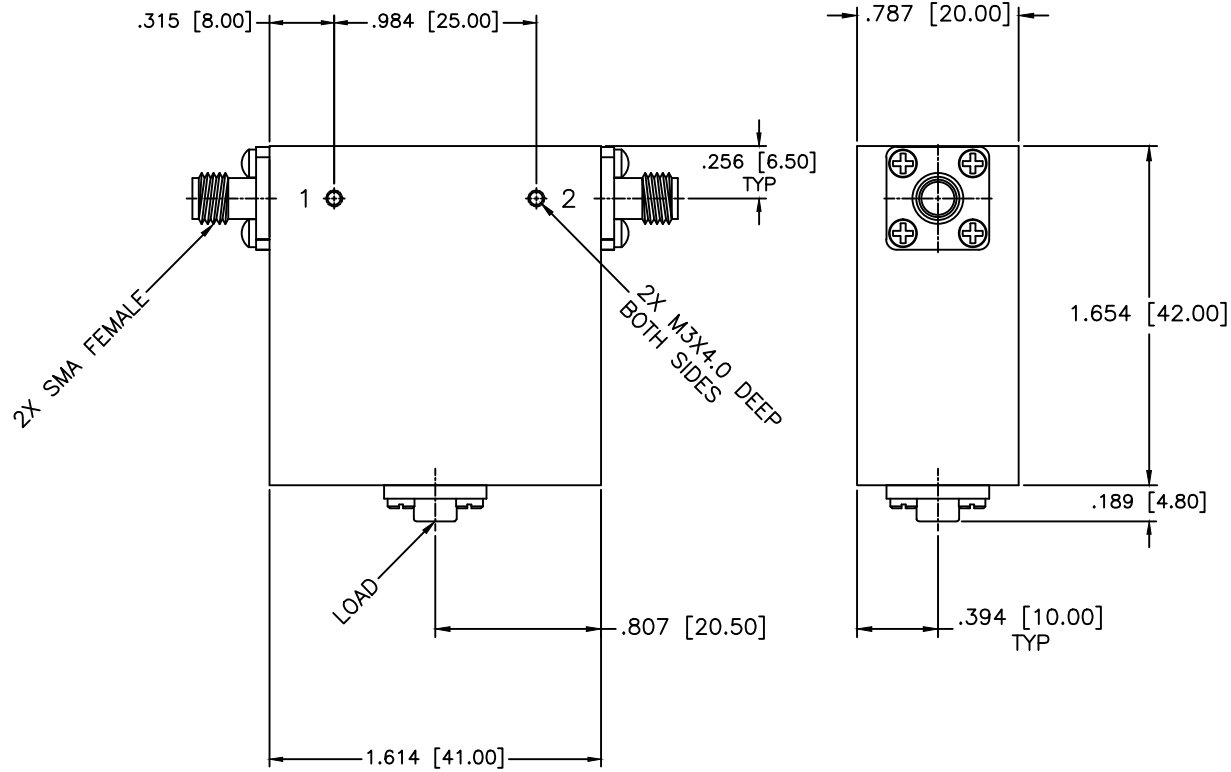


REVISIONS				
ZONE	REV	DESCRIPTION	Date	APPROVED



SPECIFICATIONS

Frequency Range: 1.9–3.6 GHz
 Isolation: 17dB Min.
 Insertion loss: 0.50dB Max.
 VSWR: 1.35:1 Max.
 Operating Temperature: 0°C to +55°C
 Circulator Power: 50W, 250W Peak

MATERIAL:			MICROWAVE COMMUNICATIONS LABORATORIES INC. 7255 30TH AVE. N. SAINT PETERSBURG, FL 33710 TEL: (727) 344-6254 FAX: (727) 381-6116 http://WWW.MCLI.COM		SCALE: N/A
UNLESS OTHERWISE SPECIFIED: TOLERANCES IN (INCHES) OR [mm] (MILLIMETERS) FRACTIONS: ± 1/64 DECIMALS: ±.01 ±.005 ANGLE: ±1/2°			DRAWING TITLE: ISOLATOR		SHEET: N/A
DRAWN: Paiboon Luekhamhan		DATE: 01-11-2012		PART NO.: IS-9	
APPROVED: T. Nguyen		DATE: 01-11-2012		CAGE CODE: OD2L5	DWG NO.: 82111
PROPRIETARY NOTICE: THE INFORMATION IN THIS DRAWING IS PROPRIETARY AND SHALL NOT BE USED OR DISCLOSED WITHOUT WRITTEN PERMISSION FROM MICROWAVE COMMUNICATIONS LABORATORIES INC. (MCLI)		THIRD ANGLE PROJECTION 		SIZE: A	REV: B
DO NOT SCALE THE DRAWING					