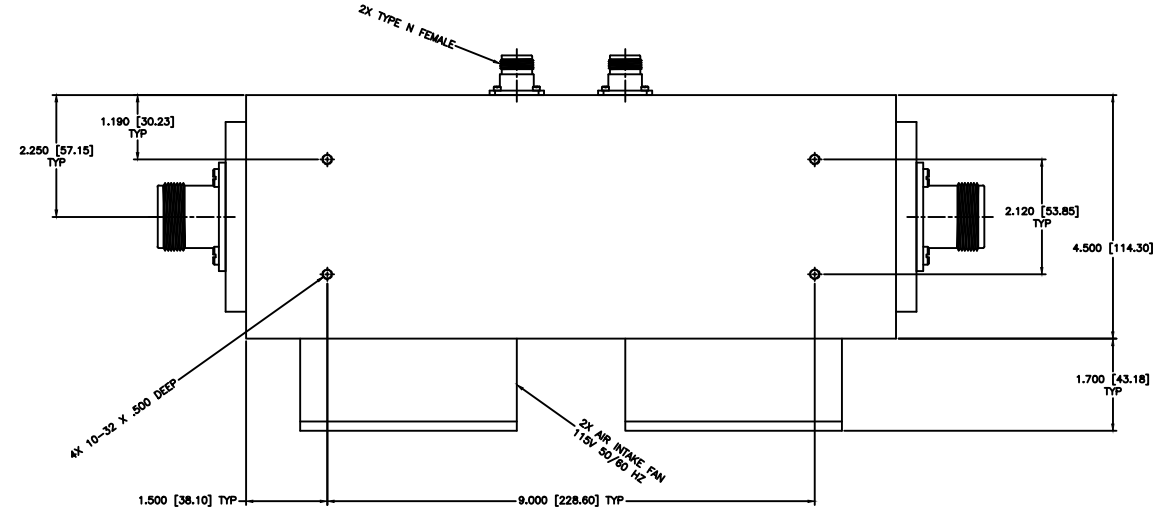
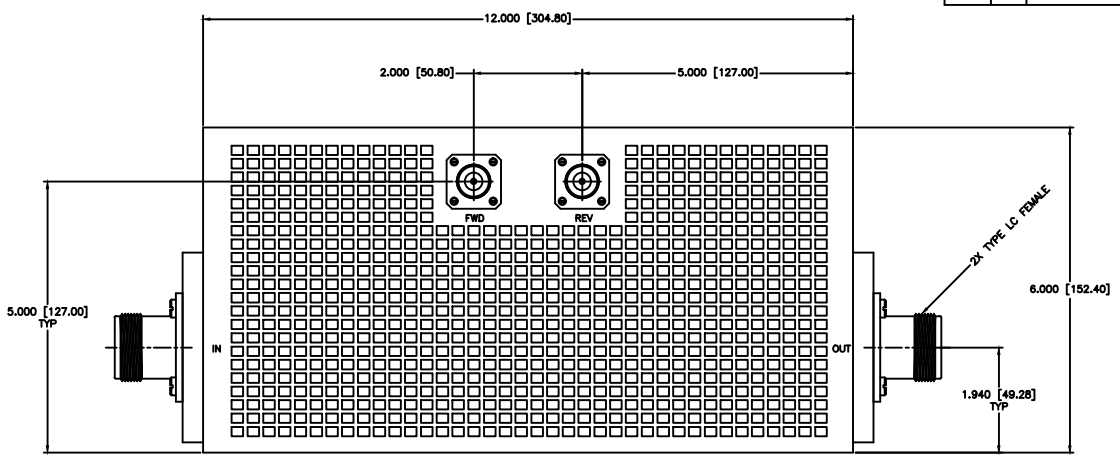


4 | 3 | 2 | 1

REVISIONS				
ZONE	REV	DESCRIPTION	DATE	APPROVED



SPECIFICATIONS

FREQUENCY RANGE: 0.01-100 MHz
 FLATNESS: ±1.0dB
 INSERTION LOSS: 0.10dB Max.
 DIRECTIVITY: 20dB Min.
 VSWR: 1.30:1 Max.
 POWER: 10kW CW

MATERIAL:	
DRAWN: Paiboon Luekhamhan	DATE: 01-06-2011
APPROVED: T. Nguyen	DATE: 01-06-2011



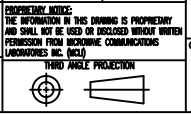
MICROWAVE COMMUNICATIONS LABORATORIES INC.
 7255 30TH AVE. N. SAINT PETERSBURG, FL 33710
 TEL: (727) 344-6254 FAX: (727) 381-6116
 http://WWW.MCLI.COM

SCALE:	N/A
SHEET:	N/A

UNLESS OTHERWISE SPECIFIED:
 TOLERANCES
 IN (INCHES) OR [mm] (MILLIMETERS)
 FRACTIONS: ± 1/64
 DECIMALS: ±0.01 ±0.005
 ANGLE: ±1/2°

DRAWING TITLE:
HIGH POWER DUAL DIRECTIONAL COUPLER

PART NO.:
HDL-35-60



CAGE CODE: OD2L5	SIZE: N/A	REV: N/A	DWG NO. 85208
DO NOT SCALE THE DRAWING			

D
C
B
A

D
C
B
A

4 | 3 | 2 | 1