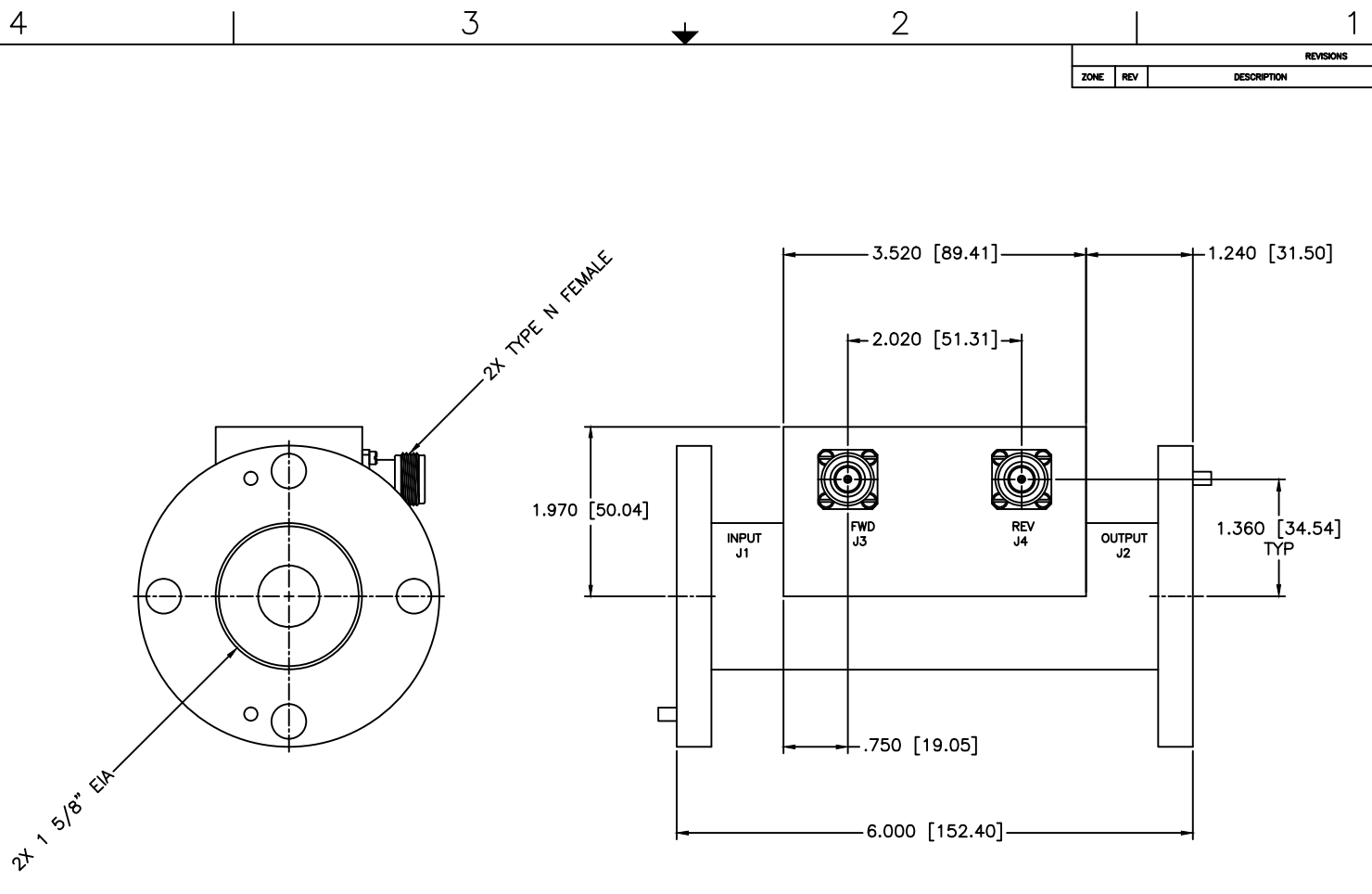


REVISIONS			
ZONE	REV	DESCRIPTION	APPROVED



**SPECIFICATIONS**

FREQUENCY RANGE: 10–500 MHz  
 COUPLING: 70±1.0dB Nom.  
 FLATNESS: ±0.75dB Max.  
 INSERTION LOSS: 0.20dB Max.  
 DIRECTIVITY: 20dB Min.  
 VSWR: 1.30:1 Max.  
 POWER: 10kW CW

MATERIAL:		<b>MCLI</b> MICROWAVE COMMUNICATIONS LABORATORIES INC. 7255 30TH AVE. N. SAINT PETERSBURG, FL 33710 TEL: (727) 344-6254 FAX: (727) 381-6116 <a href="http://www.mcli.com">http://www.mcli.com</a>	SCALE:	N/A
UNLESS OTHERWISE SPECIFIED: TOLERANCES IN (INCHES) OR [mm] (MILLIMETERS) FRACTIONS: ± 1/64 DECIMALS: ±.01 ±.005 ANGLE: ±1/2°			SHEET:	N/A
DRAWING TITLE:		HIGH POWER DUAL DIRECTIONAL COUPLER		
PART NO.:		HDL-31-70		
DRAWN:	DATE:	PROPRIETARY NOTICE:	CAGE CODE:	SIZE:
Pai boon Luethamhan	10-29-2012	THE INFORMATION IN THIS DRAWING IS PROPRIETARY AND SHALL NOT BE USED OR DISCLOSED WITHOUT WRITTEN PERMISSION FROM MICROWAVE COMMUNICATIONS LABORATORIES INC. (MCLI)	OD2L5	C
APPROVED:	DATE:	THIRD ANGLE PROJECTION	REV:	N/A
T. Nguyen	10-29-2012		DO NOT SCALE THE DRAWING	DWG NO.:
			86180	