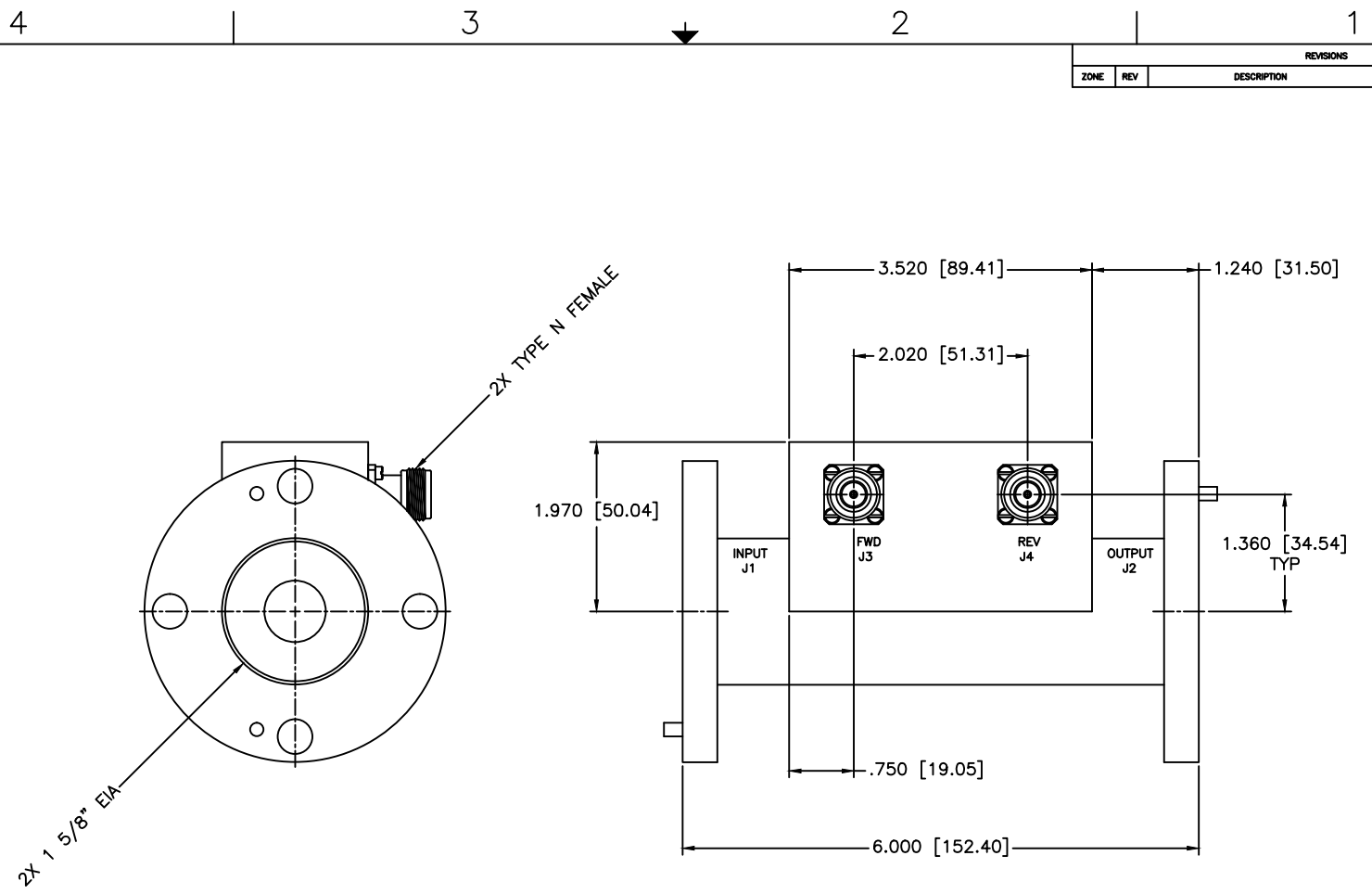


REVISIONS				
ZONE	REV	DESCRIPTION	DATE	APPROVED



SPECIFICATIONS

FREQUENCY RANGE: 1-50 MHz
 FLATNESS: $\pm 0.50\text{dB}$
 INSERTION LOSS: 0.05dB Max.
 DIRECTIVITY: 30dB Min.
 VSWR: 1.05:1 Max.
 POWER: 10kW CW

MATERIAL:		 MCLI MICROWAVE COMMUNICATIONS LABORATORIES INC. 7255 30TH AVE. N. SAINT PETERSBURG, FL 33710 TEL: (727) 344-6254 FAX: (727) 381-6116 http://WWW.MCLI.COM	SCALE:	N/A
			SHEET:	N/A
DRAWN:		UNLESS OTHERWISE SPECIFIED: TOLERANCES IN (INCHES) OR [mm] (MILLIMETERS) FRACTIONS: $\pm 1/64$ DECIMALS: $\pm 0.01 \pm 0.005$ ANGLE: $\pm 1/2^\circ$	DRAWING TITLE:	
DATE:			HIGH POWER DUAL DIRECTIONAL COUPLER	
DATE:		PART NO.		HDL-17-70
APPROVED:		PROPRIETARY NOTICE: THE INFORMATION IN THIS DRAWING IS PROPRIETARY AND SHALL NOT BE USED OR DISCLOSED WITHOUT WRITTEN PERMISSION FROM MICROWAVE COMMUNICATIONS LABORATORIES INC. (MCLI)	CAGE CODE:	SIZE:
DATE:			OD2L5	C
THIRD ANGLE PROJECTION		DWG NO.		85188
		DO NOT SCALE THE DRAWING		