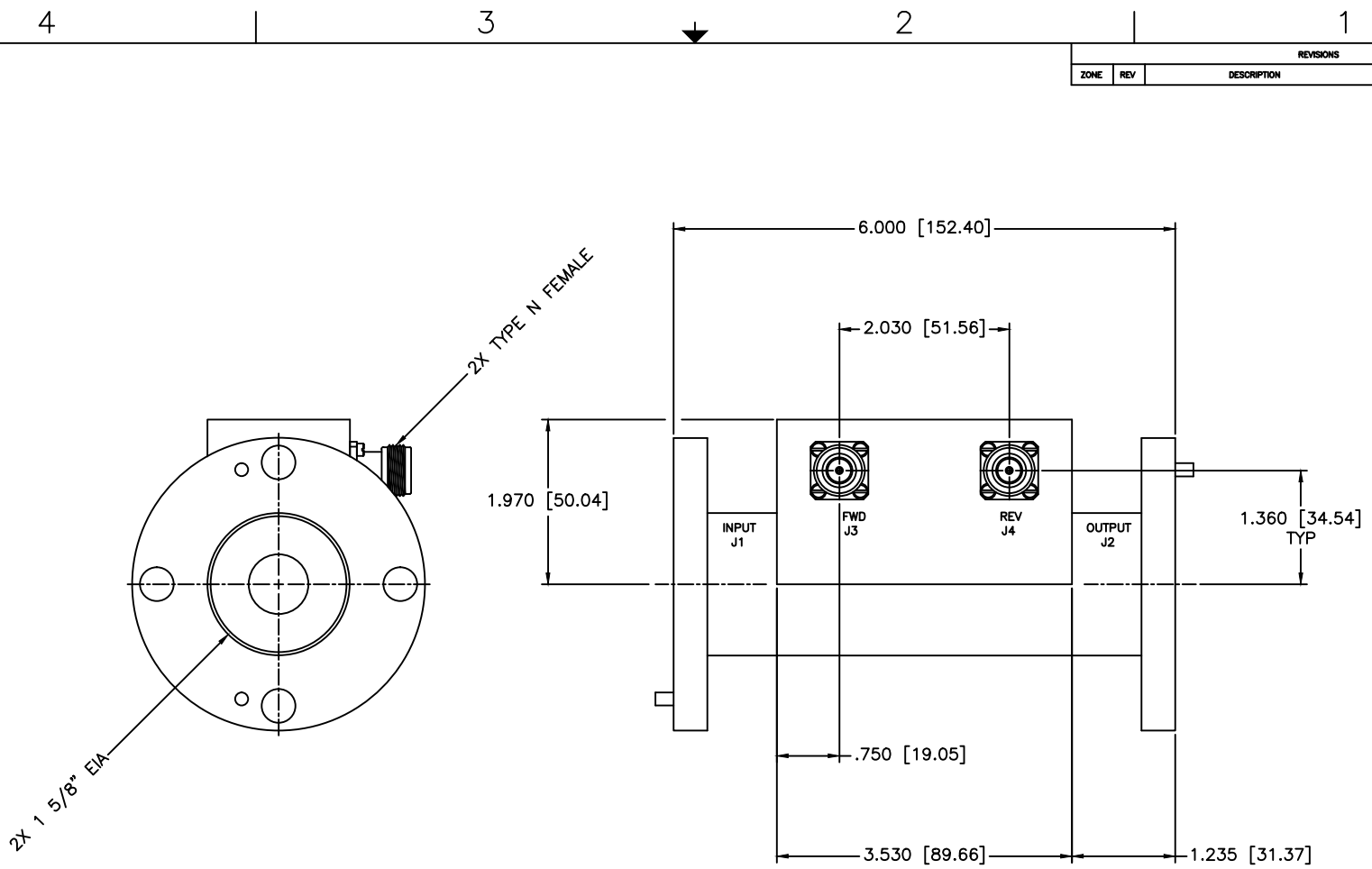


REVISIONS				
ZONE	REV	DESCRIPTION	DATE	APPROVED



2X 1 5/8" EIA

2X TYPE N FEMALE

SPECIFICATIONS

- FREQUENCY RANGE: 2-32 MHz
- COUPLING: 70±1.0dB Max.
- FLATNESS: ±0.5dB Max.
- INSERTION LOSS: 0.05dB Max.
- DIRECTIVITY: 30dB Min.
- VSWR (ML): 1.05:1 Max.
- POWER: 10,000W CW

MATERIAL:			MICROWAVE COMMUNICATIONS LABORATORIES INC. 7255 30TH AVE. N. SAINT PETERSBURG, FL 33710 TEL: (727) 344-6254 FAX: (727) 381-6116 http://www.mcli.com		SCALE: N/A
UNLESS OTHERWISE SPECIFIED: TOLERANCES IN (INCHES) OR (mm) (MILLIMETERS) FRACTIONS: ± 1/64 DECIMALS: ±.02 ±.009 ANGLE: ±1/2°			DRAWING TITLE: HIGH POWER DUAL DIRECTIONAL COUPLER		SHEET: N/A
DRAWN: Paiboon Luethamhan		DATE: 01-04-2011		PART NO.: HDL-13-70	
APPROVED: T. Nguyen		DATE: 01-04-2011		CAGE CODE: OD2L5	SIZE: C
				REV: N/A	DWG NO.: 85194
DO NOT SCALE THE DRAWING					