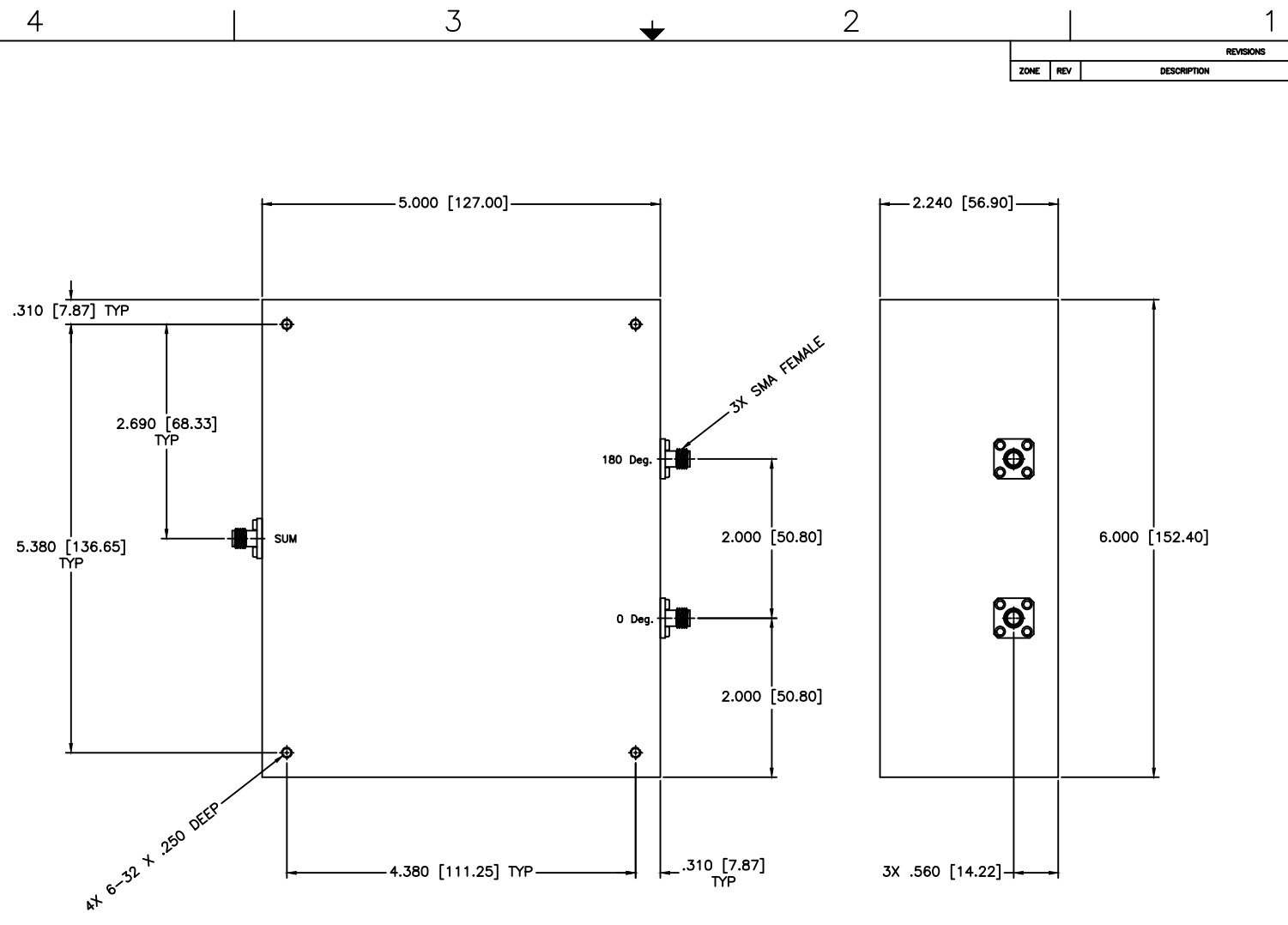


REVISIONS				
ZONE	REV	DESCRIPTION	DATE	APPROVED



SPECIFICATIONS

- Frequency Range: 100–500 MHz
- Insertion Loss: 1.0dB Max.
- Isolation: 20dB Min.
- Phase Balance: 180±5° Max.
- Amplitude Balance: 0.3dB Max.
- VSWR: 1.35:1 Max.
- Power: 200W CW

MATERIAL:			MICROWAVE COMMUNICATIONS LABORATORIES INC. 7255 30TH AVE. N. SAINT PETERSBURG, FL 33710 TEL: (727) 344-6254 FAX: (727) 381-6116 http://WWW.MCLI.COM		SCALE: N/A
UNLESS OTHERWISE SPECIFIED: TOLERANCES IN (INCHES) OR [mm] (MILLIMETERS) FRACTIONS: ± 1/64 DECIMALS: ± 0.01 ± 0.005 ANGLE: ± 1/2°			DRAWING TITLE: 2-Way 180° Combiner/Divider		SHEET: N/A
DRAWN: Paiboon Luekhamhan		DATE: 03-27-2013		PART NO.: HCD-19	
APPROVED: T. Nguyen		DATE: 03-27-2013		CAGE CODE: OD2L5	SIZE: C
THIRD ANGLE PROJECTION		REV: N/A		DWG NO.: 86256	
DO NOT SCALE THE DRAWING					