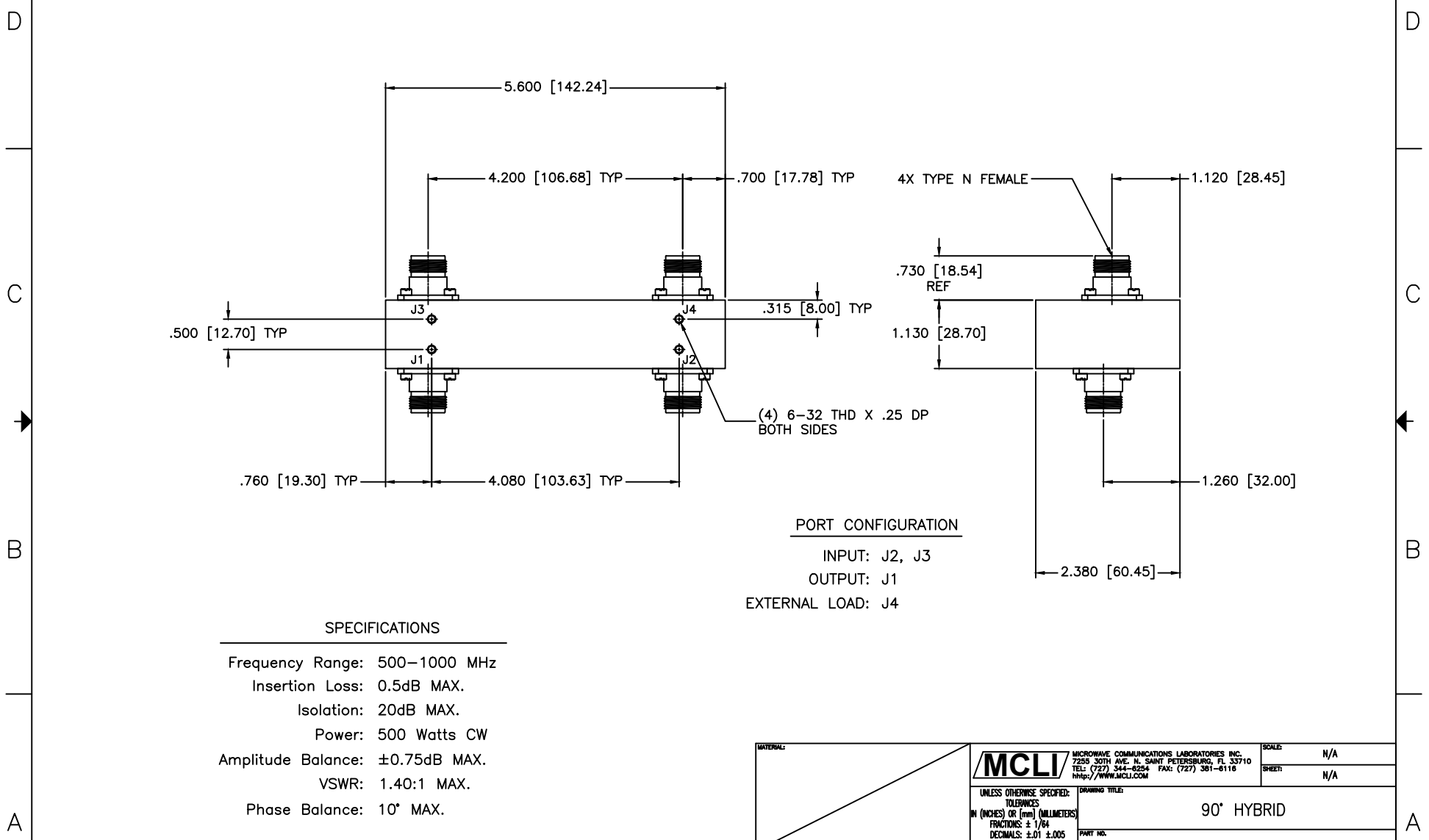


4 | 3 | 2 | 1



**PORT CONFIGURATION**  
 INPUT: J2, J3  
 OUTPUT: J1  
 EXTERNAL LOAD: J4

**SPECIFICATIONS**

Frequency Range: 500-1000 MHz  
 Insertion Loss: 0.5dB MAX.  
 Isolation: 20dB MAX.  
 Power: 500 Watts CW  
 Amplitude Balance: ±0.75dB MAX.  
 VSWR: 1.40:1 MAX.  
 Phase Balance: 10° MAX.

MATERIAL:				MICROWAVE COMMUNICATIONS LABORATORIES INC. 7255 30TH AVE. N. SAINT PETERSBURG, FL 33710 TEL: (727) 544-6254 FAX: (727) 381-8118 http://www.mcli.com		SCALE: N/A
UNLESS OTHERWISE SPECIFIED: TOLERANCES IN (INCHES) OR (mm) (MILLIMETERS) FRACTIONS: ± 1/64 DECIMALS: ± .01 ± .005 ANGLE: ± 1/2°		DRAWING TITLE: 90° HYBRID		PART NO. HB-1-500/NF		SHEET: N/A
DRAWN: Paiboon Luekhamhan	DATE: 12-23-2008	<small>THE INFORMATION ON THIS DRAWING IS PROPERTY OF MCLI AND IS NOT TO BE REPRODUCED OR TRANSMITTED IN ANY FORM OR BY ANY MEANS, ELECTRONIC OR MECHANICAL, INCLUDING PHOTOCOPYING, RECORDING, OR BY ANY INFORMATION STORAGE AND RETRIEVAL SYSTEM.</small>		CAGE CODE: OD2L5	SIZE: N/A	REV: N/A
APPROVED: T. Nguyen	DATE: 12-23-2008			DO NOT SCALE THE DRAWING	DWG NO. 84036	

4 | 3 | 2 | 1