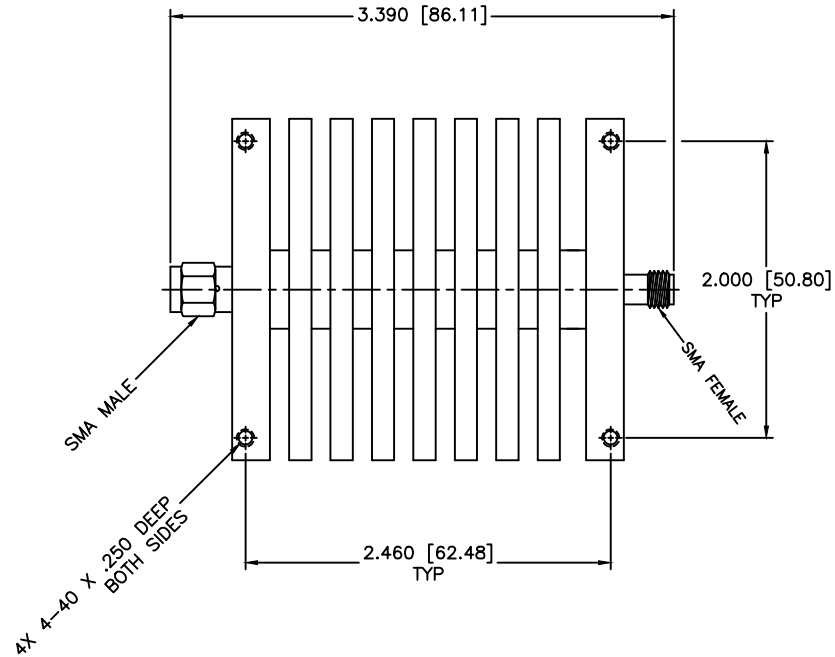
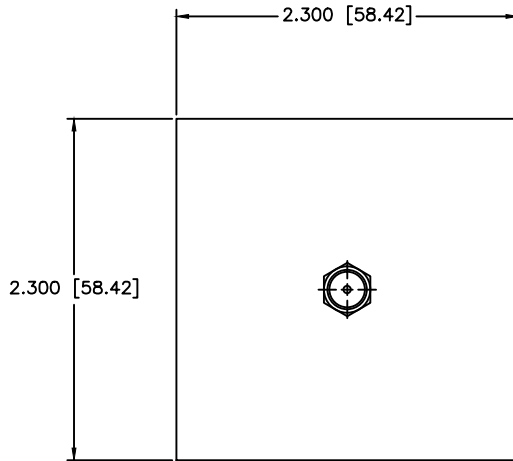


MATERIAL AND FINISHING
 SMA Connectors: Passivated Stainless Steel
 Conductors: Gold Plated Beryllium Copper
 Housing & Heat Sink: Black Anodized Aluminum

REVISIONS				
ZONE	REV	DESCRIPTION	DATE	APPROVED



SPECIFICATIONS
 Frequency Range: DC-18 GHz
 Available dB Values: 3, 6, 10, 20, 30 & 40dB
 Attenuation Accuracy: DC-12.4GHz 12.4-18GHz
 3dB, 6dB ±0.50dB (Max.) ±0.75dB (Max.)
 10dB, 20dB ±0.75dB (Max.) ±1.00dB (Max.)
 30dB ±1.00dB (Max.) ±1.25dB (Max.)
 40dB ±1.25dB (Max.) ±1.50dB (Max.)
 VSWR Max.
 DC-6, 12, 18 GHz: 1.20:1, 1.30:1, 1.40:1
 Input Power: 25W Avg. @ 25°C
 Derated Linearly to 5W @ 125°C
 Peak Power: 500 Watts Max.
 5uSec pulse .05% duty cycled
 Operating Temperature: -65°C to +125°C
 Impedance: 50 Ohms

MATERIAL:			MICROWAVE COMMUNICATIONS LABORATORIES INC. 7255 30TH AVE. N. SAINT PETERSBURG, FL 33710 TEL: (727) 344-6254 FAX: (727) 381-6116 http://WWW.MCLI.COM		SCALE: N/A	
			UNLESS OTHERWISE SPECIFIED: TOLERANCES IN (INCHES) OR [mm] (MILLIMETERS) FRACTIONS: ± 1/64 DECIMALS: ±.020 ANGLE: ±1/2°		SHEET: N/A	
DRAWING TITLE:		SMA ATTENUATOR, 25 WATTS				
PART NO.:		FAS-21-dB				
DRAWN:	DATE:	<small>PROPRIETARY NOTICE: THE INFORMATION IN THIS DRAWING IS PROPRIETARY AND SHALL NOT BE USED OR DISCLOSED WITHOUT WRITTEN PERMISSION FROM MICROWAVE COMMUNICATIONS LABORATORIES INC. (MCLI)</small>	CAGE CODE:	SIZE:	REV:	DWG NO.:
APPROVED:	DATE:		OD2L5	N/A	N/A	84367
THIRD ANGLE PROJECTION		DO NOT SCALE THE DRAWING				