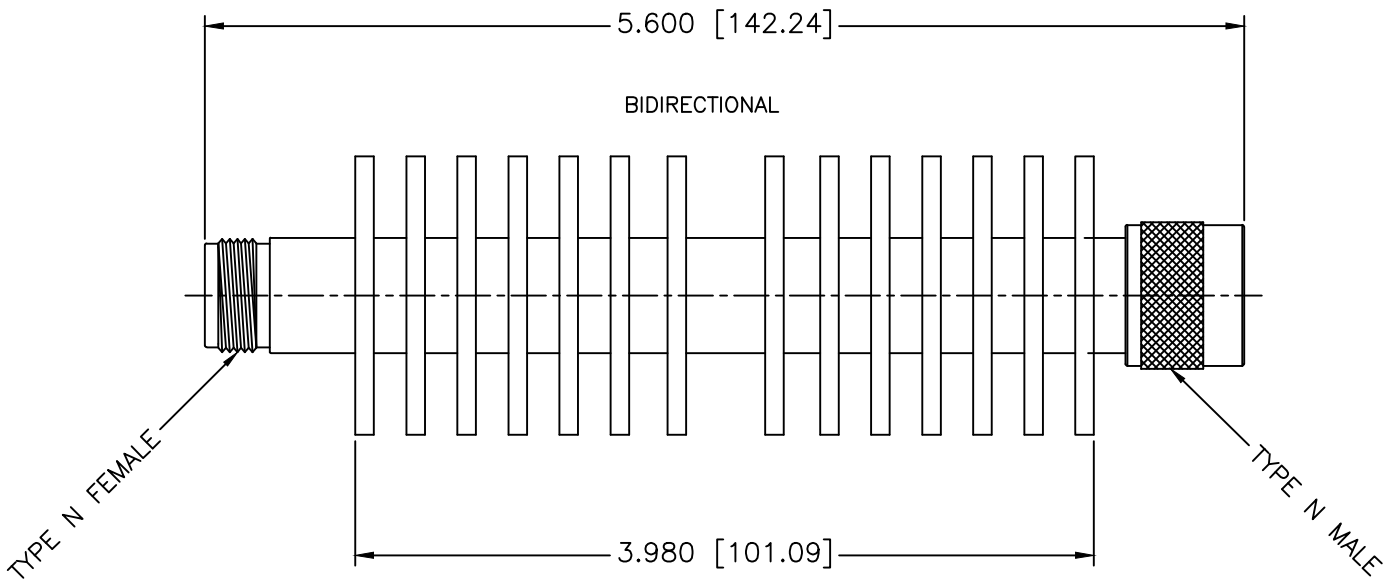
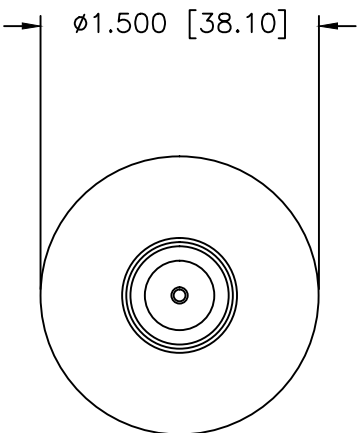


REVISIONS				
ZONE	REV	DESCRIPTION	DATE	APPROVED



SPECIFICATIONS

Frequency Range: DC-18 GHz
 VSWR: 1.20:1 Max. @ 8 GHz
 VSWR: 1.25:1 Max. @ 12 GHz
 VSWR: 1.35:1 Max. @ 18 GHz
 WSWR for 6dB only 1.45:1 Max. @ 18 GHz
 Power Average: 50 Watts @ 25° C
 Power Peak: 1,000 Watts
 Power Derated Linearly To 10 Watts @ +125° C
 Impedance: 50 Ohms
 Attenuation Accuracy: ±1.5dB
 Temperature Range -55°C to +125°C
 ROHS Compliant

MECHANICAL

Connector Shell: Stainless Steel
 Connector Contact: Gold Plated Beryllium Copper
 Housing: Aluminum

MATERIAL:			MICROWAVE COMMUNICATIONS LABORATORIES INC. 7255 30TH AVE. N. SAINT PETERSBURG, FL 33710 TEL: (727) 344-6254 FAX: (727) 381-6116 http://WWW.MCLI.COM		SCALE: N/A
UNLESS OTHERWISE SPECIFIED: TOLERANCES IN (INCHES) OR [mm] (MILLIMETERS) FRACTIONS: ± 1/64 DECIMALS: ±.025 ±.015 ANGLE: ±1/2°			DRAWING TITLE: 50 WATTS COAXIAL ATTENUATOR, TYPE N		SHEET: N/A
DRAWN: Paiboon Luekhamhan		DATE: 08-25-2011		PART NO. FAN-37-dB	
APPROVED: T. Nguyen		DATE: 08-25-2011		CAGE CODE: OD2L5	SIZE: A REV: N/A DWG NO.: 85865
PROPRIETARY NOTICE: THE INFORMATION IN THIS DRAWING IS PROPRIETARY AND SHALL NOT BE USED OR DISCLOSED WITHOUT WRITTEN PERMISSION FROM MICROWAVE COMMUNICATIONS LABORATORIES INC. (MCLI)		THIRD ANGLE PROJECTION 		DO NOT SCALE THE DRAWING	