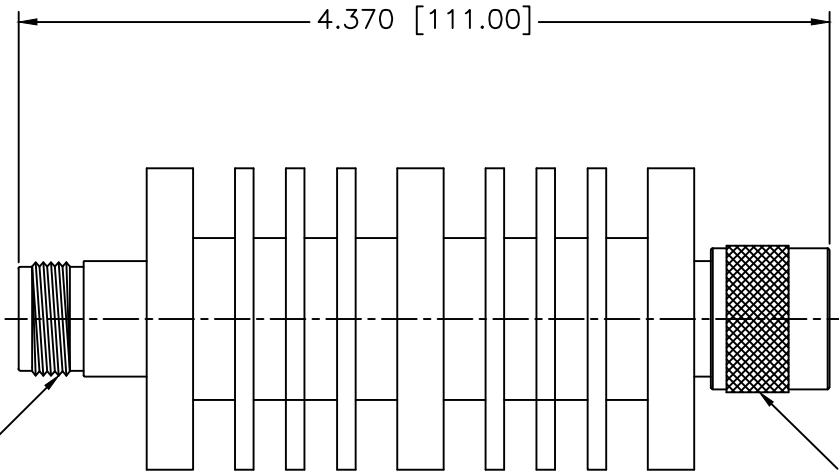
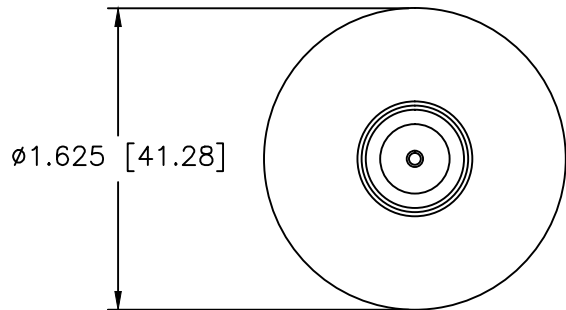


REVISIONS				
ZONE	REV	DESCRIPTION	DATE	APPROVED



TYPE N FEMALE

TYPE N MALE

BIDIRECTIONAL

MECHANICAL

Connector Shell: Stainless Steel  
 Connector Contact: Gold Plated Beryllium Copper  
 Housing: Aluminum

**SPECIFICATIONS**

Frequency Range: DC–8.5 GHz  
 VSWR: 1.20:1 Max. @ 4 GHz  
 VSWR: 1.20:1 Max. @ 8 GHz  
 Power Average: 50 Watts @ 25° C  
 Power Peak: 1,000 Watts  
 Impedance: 50 Ohms  
 Attenuation Accuracy:  
 3dB to 20dB ±0.75dB  
 30dB to 40dB ±1.00dB  
 Temperature Range: –55°C to +125°C  
 ROHS Compliant

MATERIAL:			MICROWAVE COMMUNICATIONS LABORATORIES INC. 7255 30TH AVE. N. SAINT PETERSBURG, FL 33710 TEL: (727) 344-6254 FAX: (727) 381-6116 http://WWW.MCLI.COM		SCALE:	N/A
			UNLESS OTHERWISE SPECIFIED: TOLERANCES IN (INCHES) OR [mm] (MILLIMETERS) FRACTIONS: ± 1/64 DECIMALS: ±.025 ±.015 ANGLE: ±1/2°		SHEET:	N/A
DRAWING TITLE:		50 WATTS COAXIAL ATTENUATOR, TYPE N				
PART NO.:		FAN-36-dB				
DRAWN:	DATE:	PROPRIETARY NOTICE: THE INFORMATION IN THIS DRAWING IS PROPRIETARY AND SHALL NOT BE USED OR DISCLOSED WITHOUT WRITTEN PERMISSION FROM MICROWAVE COMMUNICATIONS LABORATORIES INC. (MCLI)	CAGE CODE:	SIZE:	REV:	DWG NO.:
APPROVED:	DATE:		OD2L5	A	N/A	85864
			DO NOT SCALE THE DRAWING			