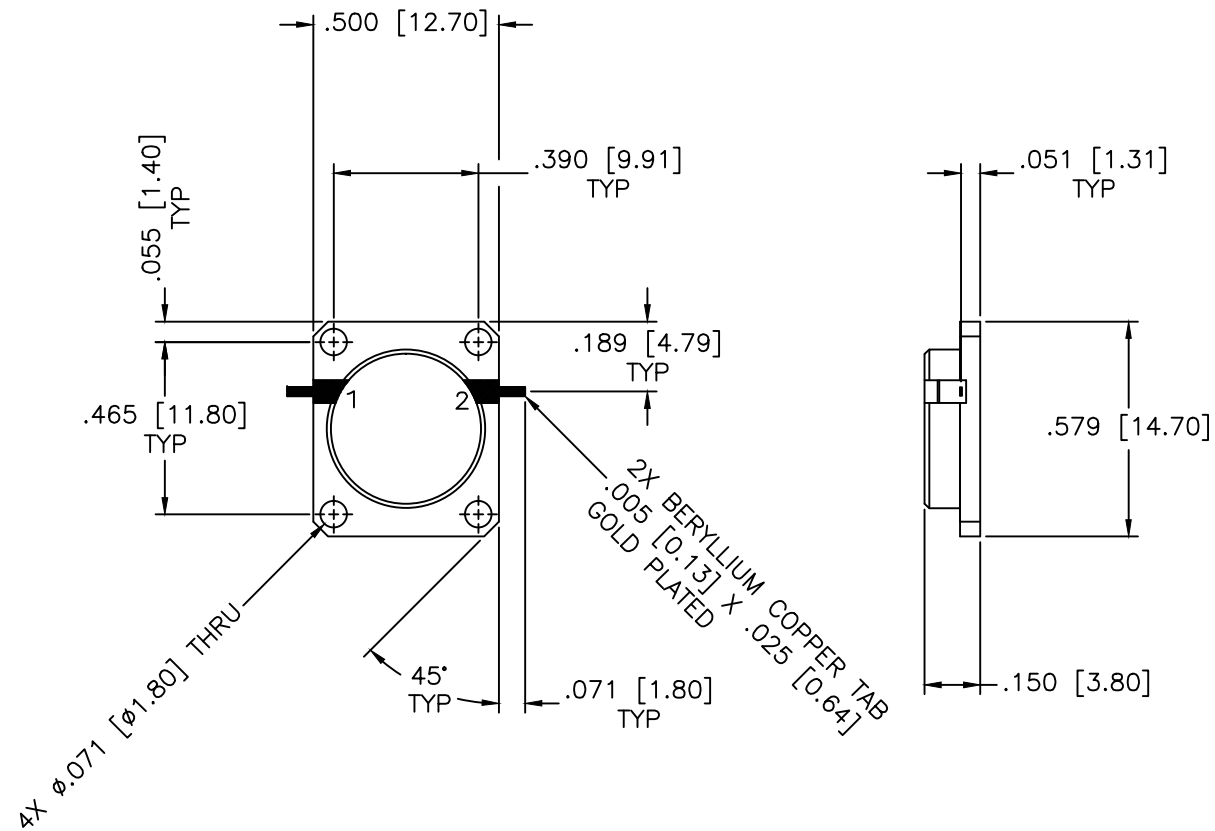


REVISIONS				
ZONE	REV	DESCRIPTION	Date	APPROVED



## SPECIFICATIONS


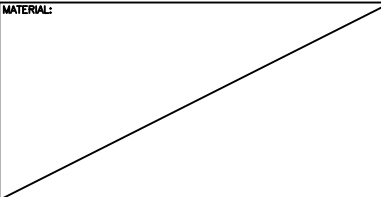
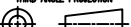
Frequency Range: 16.3–17.3 GHz

Isolation: 20dB Min.

Insertion loss: 0.4dB Max.

VSWR: 1.25:1 Max.

Operating Temperature: -20°C to +95°C

MATERIAL:		 MICROWAVE COMMUNICATIONS LABORATORIES INC. 7255 30TH AVE. N. SAINT PETERSBURG, FL 33710 TEL: (727) 344-6254 FAX: (727) 381-6116 http://WWW.MCLI.COM		SCALE: N/A SHEET: N/A	
		UNLESS OTHERWISE SPECIFIED: TOLERANCES IN (INCHES) OR (mm) (MILLIMETERS) FRACTIONS: $\pm 1/64$ DECIMALS: $\pm 0.01 \pm 0.005$ ANGLES: $\pm 1/2^\circ$		DRAWING TITLE: <div style="text-align: center; font-size: 1.5em;">DROP-IN ISOLATOR</div>	
		PART NO. <div style="text-align: center; font-size: 1.5em;">DI-114</div>		CAGE CODE: OD2L5	
DRAWN: Paiboon Luekhamhan		DATE: 11-26-2013		PROPRIETARY NOTICE: THE INFORMATION IN THIS DRAWING IS PROPRIETARY AND SHALL NOT BE USED OR REPRODUCED WITHOUT WRITTEN PERMISSION FROM MICROWAVE COMMUNICATIONS LABORATORIES INC. (MCLI)	
APPROVED: T. Nguyen		DATE: 11-26-2013		<div style="display: flex; justify-content: space-between;"> <div>           THIRD ANGLE PROJECTION   </div> <div>           SIZE: A            REV: N/A            DO NOT SCALE THE DRAWING         </div> <div>           DWG NO.  <div style="font-size: 1.5em;">86474</div> </div> </div>	