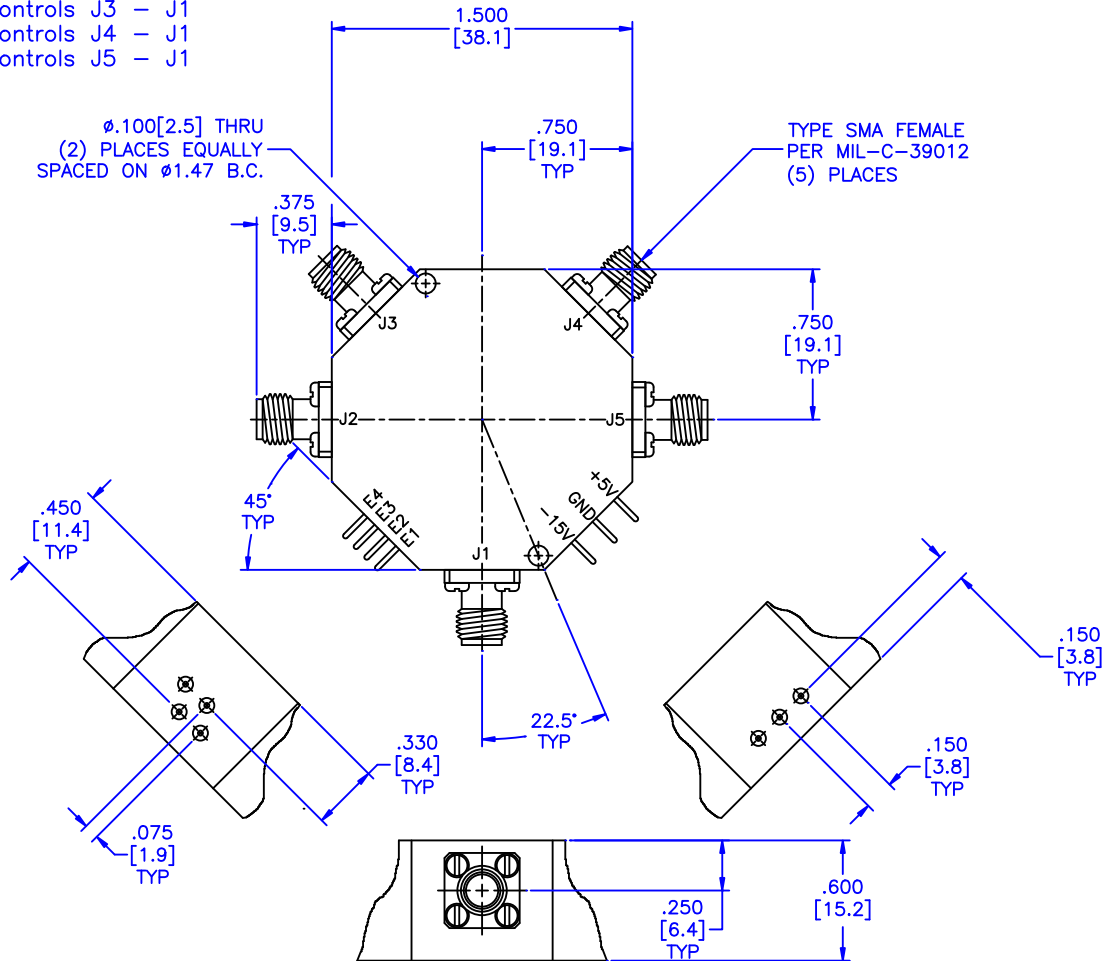


REVISIONS				
ZONE	REV	DESCRIPTION	DATE	APPROVED

- \* DC BIAS:
- \* Voltage/Current Required:
  - +5±0.5 Vdc @ 160 mA, Max.
  - 15±3.0 Vdc @ 50 mA, Max.
- \* TTL Control Logic:
  - Logic "0" (-0.3V to +0.8V) = ON
  - Logic "1" (+2.0V to +5.0V) = OFF
  - E1 controls J2 - J1
  - E2 controls J3 - J1
  - E3 controls J4 - J1
  - E4 controls J5 - J1



FREQUENCY RANGE	INSERTION LOSS	VSWR	ISOLATION	SWITCHING SPEED	MAX RF SPEED
(GHz)	(dB Max)	(Max)	(dB Min)	(nsec Max)	(W CW)
0.5-18	3.6	2.00:1	65	100	0.5

MATERIAL:			MICROWAVE COMMUNICATIONS LABORATORIES INC. 7265 30TH AVE. N. SAINT PETERSBURG, FL 33710 TEL: (727) 344-6254 FAX: (727) 381-6116 http://WWW.MCLI.COM		SCALE:	N/A	
					SHEET:	N/A	
DRAWN:		UNLESS OTHERWISE SPECIFIED: TOLERANCES IN (INCHES) OR [mm] (MILLIMETERS) FRACTIONS: ± 1/64 DECIMALS: ±.01 ±.005 ANGLE: ±1/2°		DRAWING TITLE:			PIN DIODE SWITCHES
DATE:		PROPRIETARY NOTICE: THE INFORMATION IN THIS DRAWING IS PROPRIETARY AND SHALL NOT BE USED OR DISCLOSED WITHOUT WRITTEN PERMISSION FROM MICROWAVE COMMUNICATIONS LABORATORIES INC. (MCLI)		PART NO.:			D4-24
APPROVED:		THIRD ANGLE PROJECTION		CAGE CODE:	SIZE:	REV:	
T. Nguyen				0D2L5	N/A	N/A	
DATE:				DO NOT SCALE THE DRAWING		DWG NO.:	
11-18-2001						82367	