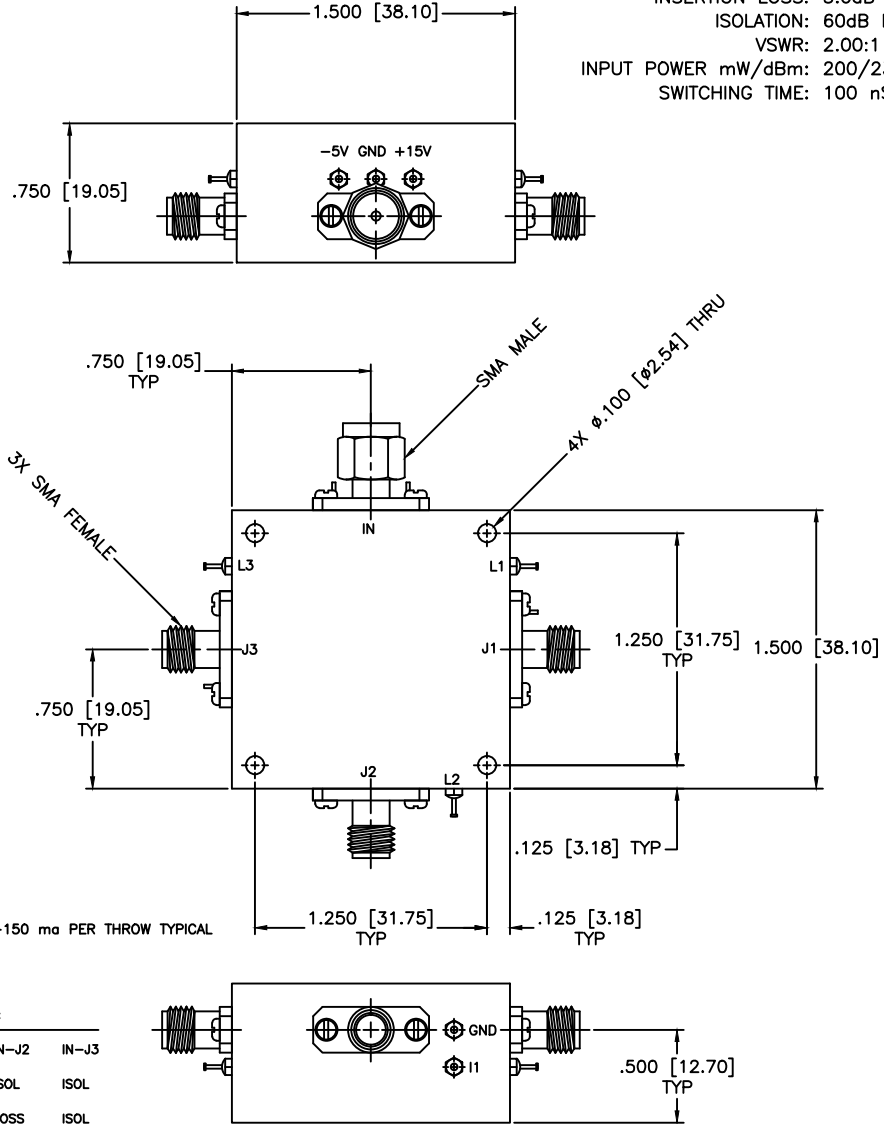


REVISIONS				
ZONE	REV	DESCRIPTION	DATE	APPROVED

SPECIFICATIONS

FREQUENCY RANGE: 0.3–18.0 GHz
 INSERTION LOSS: 3.0dB Max.
 ISOLATION: 60dB Min.
 VSWR: 2.00:1 Max.
 INPUT POWER mW/dBm: 200/23
 SWITCHING TIME: 100 nSEC



DRIVER SCHOTTKY TTL
 VOLTAGE REQUIRED ±5 VDC
 CURRENT REQUIRED IS -80 ma, +150 ma PER THROW TYPICAL
 INDIVIDUAL TTL CONTROL LOGIC:
 LOGIC "0" (-0.3V to +0.8V)=ON
 LOGIC "1" (+2.0V to +5.0V)=OFF

TTL Control logic					
L1	J2	J3	IN-J1	IN-J2	IN-J3
0	1	1	LOSS	ISOL	ISOL
1	0	1	ISOL	LOSS	ISOL
1	1	0	ISOL	ISOL	LOSS

MATERIAL:	
DRAWN: Paiboon Luekhamhan	
DATE: 02-14-2007	
APPROVED: T. Nguyen	
DATE: 02-14-2007	



MICROWAVE COMMUNICATIONS LABORATORIES INC.
 7255 30TH AVE. N. SAINT PETERSBURG, FL 33710
 TEL: (727) 344-6254 FAX: (727) 381-6116
 http://www.MCLI.COM

SCALE:	N/A
SHEET:	N/A

UNLESS OTHERWISE SPECIFIED:
 TOLERANCES
 IN (INCHES) OR [mm] (MILLIMETERS)
 FRACTIONS: ± 1/64
 DECIMALS: ±.01 ±.005
 ANGLE: ±1/2°

DRAWING TITLE:
PIN DIODE SWITCHES

PROPRIETARY NOTICE:
 THE INFORMATION IN THIS DRAWING IS PROPRIETARY
 AND SHALL NOT BE USED OR DISCLOSED WITHOUT WRITTEN
 PERMISSION FROM MICROWAVE COMMUNICATIONS
 LABORATORIES INC. (MCLI)
 THIRD ANGLE PROJECTION

PART NO. D3-13/REF/SMI			
CAGE CODE:	SIZE:	REV:	DWG NO.
OD2L5	A	N/A	82776
DO NOT SCALE THE DRAWING			