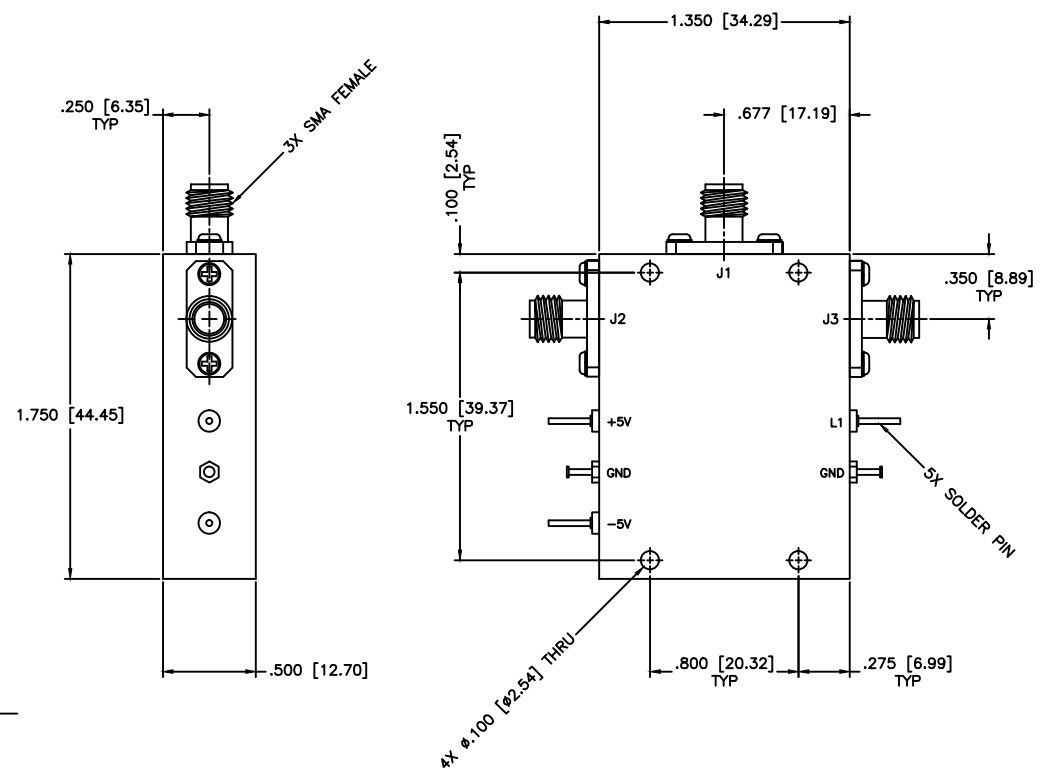




REVISIONS				
ZONE	REV	DESCRIPTION	Date	APPROVED



SPECIFICATIONS

Frequency Range: 2–18 GHz
 Switch Type: SP2T
 Isolation: 60dB min
 Insertion Loss: 2.8dB max
 VSWR: 2.00:1 Max.
 Input Power: 200mW (23dBm)
 Switching Time: 100 (nSec)
 Driver: Schottkey TTL
 Voltage/Current Required: ± 5 Vdc @ ± 30 mA, Typical
 Individual TTL Control Logic: Logic "0" (-0.3V to +0.8V) = ON
 Logic "1" (+2.0V to +5.0V) = OFF

TTL Control Logic			
L1	IN-J1	IN-J2	
0	Isolation	Insertion Loss	
1	Insertion Loss	Isolation	

MATERIAL:		MICROWAVE COMMUNICATIONS LABORATORIES INC. 7255 30TH AVE. N. SAINT PETERSBURG, FL 33710 TEL: (727) 344-6254 FAX: (727) 381-6116 http://www.MCLI.com		SCALE: N/A
UNLESS OTHERWISE SPECIFIED: TOLERANCES IN (INCHES) OR [mm] (MILLIMETERS) FRACTIONS: $\pm 1/64$ DECIMALS: $\pm 0.01 \pm 0.005$ ANGLE: $\pm 1/2^\circ$		DRAWING TITLE: PIN DIODE SWITCHES, REFLECTIVE		SHEET: N/A
DRAWN: Paiboon Luekhamhan		DATE: 04-25-2007		PART NO. D2-9/REF
APPROVED: T. Nguyen		DATE: 04-25-2007		CAGE CODE: OD2L5
PROPRIETARY NOTICE: THE INFORMATION IN THIS DRAWING IS PROPRIETARY AND SHALL NOT BE USED OR DISCLOSED WITHOUT WRITTEN PERMISSION FROM MICROWAVE COMMUNICATIONS LABORATORIES INC. (MCLI) THIRD ANGLE PROJECTION		SIZE: N/A	REV: N/A	DWG NO. 82816
		DO NOT SCALE THE DRAWING		

