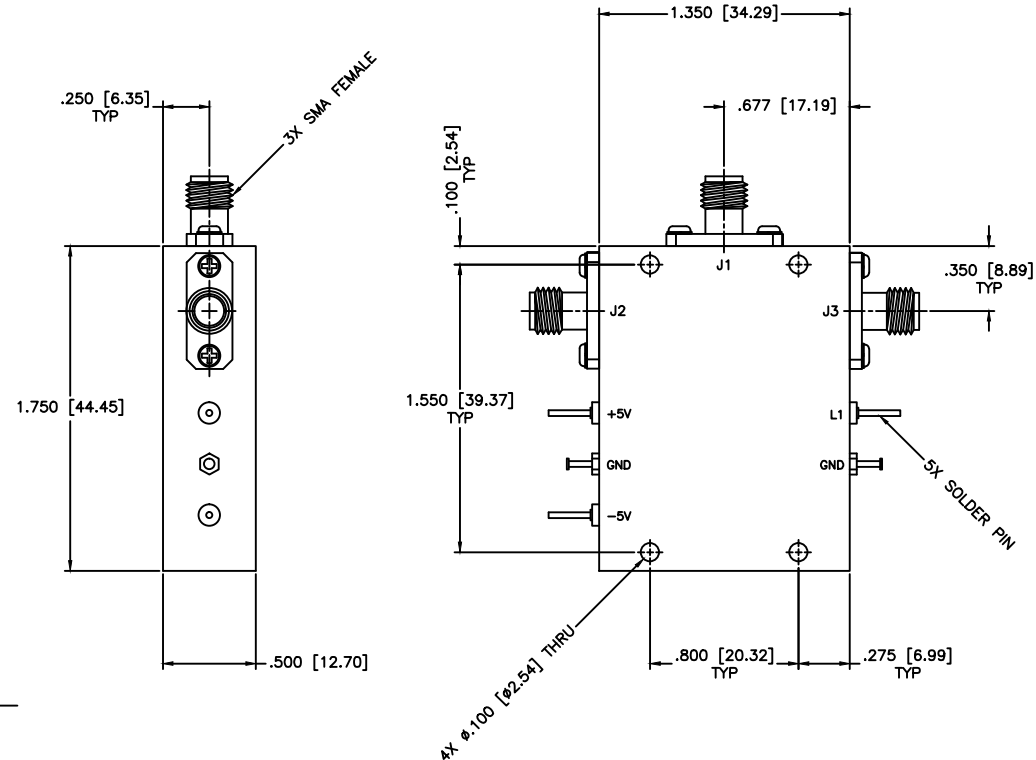




REVISIONS				
ZONE	REV	DESCRIPTION	Date	APPROVED



**SPECIFICATIONS**

Frequency Range: 1-3 GHz  
 Switch Type: SP2T  
 Isolation: 60dB min  
 Insertion Loss: 2.0dB max  
 VSWR: 1.60:1 Max.  
 Input Power: 200mW (23dBm)  
 Switching Time: 100 (nSec)  
 Driver: Schottkey TTL  
 Voltage/Current Required:  $\pm 5$  Vdc @  $\pm 30$  mA, Typical  
 Individual TTL Control Logic: Logic "0" (-0.3V to +0.8V) = ON  
 Logic "1" (+2.0V to +5.0V) = OFF  
  
**TTL Control Logic**  

L1	IN-J1	IN-J2
0	Isolation	Insertion Loss
1	Insertion Loss	Isolation

MATERIAL:			MICROWAVE COMMUNICATIONS LABORATORIES INC. 7255 30TH AVE. N. SAINT PETERSBURG, FL 33710 TEL: (727) 344-6254 FAX: (727) 381-6116 http://www.MCLI.com		SCALE: N/A
UNLESS OTHERWISE SPECIFIED: TOLERANCES IN (INCHES) OR [mm] (MILLIMETERS) FRACTIONS: $\pm 1/64$ DECIMALS: $\pm 0.01 \pm 0.005$ ANGLE: $\pm 1/2^\circ$			DRAWING TITLE: <b>PIN DIODE SWITCHES, ABORPTIVE</b>		SHEET: N/A
DRAWN: Paiboon Luekhamhan		DATE: 08-29-2006		PART NO. D2-6/ABS	
APPROVED: T. Nguyen		DATE: 08-29-2006		CAGE CODE: OD2L5	SIZE: A
PROPRIETARY NOTICE: THE INFORMATION IN THIS DRAWING IS PROPRIETARY AND SHALL NOT BE USED OR DISCLOSED WITHOUT WRITTEN PERMISSION FROM MICROWAVE COMMUNICATIONS LABORATORIES INC. (MCLI) THIRD ANGLE PROJECTION		REV: N/A	DWG NO. 82636		
DO NOT SCALE THE DRAWING					

