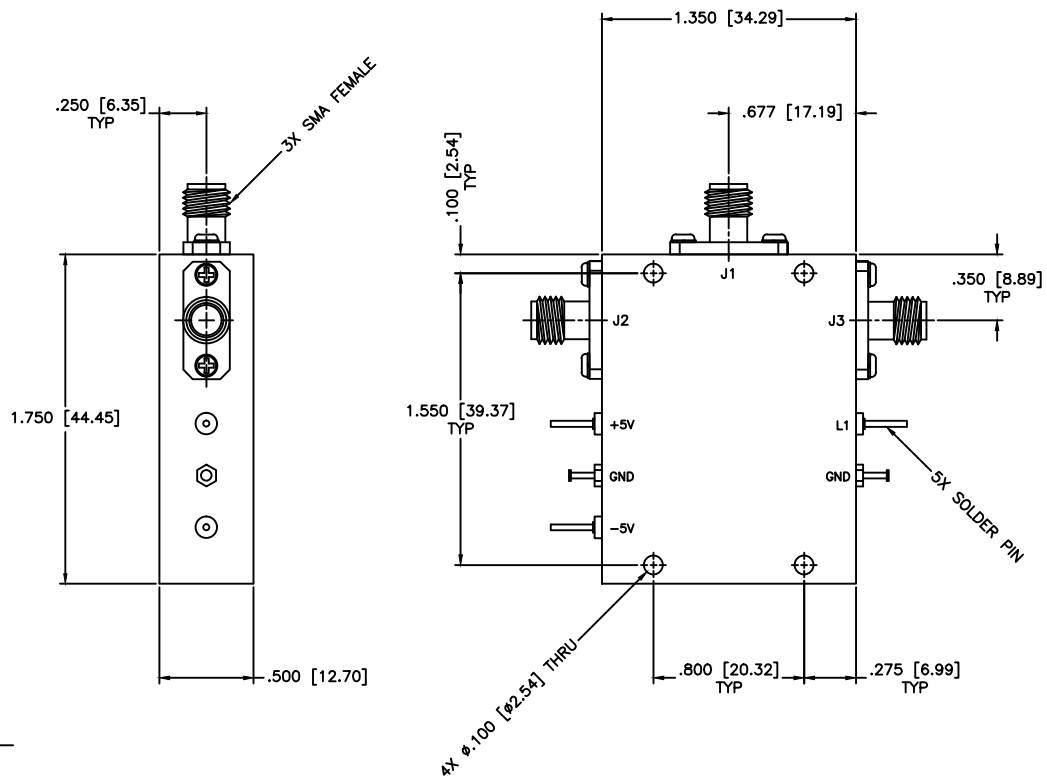


| REVISIONS |     |             |      |          |
|-----------|-----|-------------|------|----------|
| ZONE      | REV | DESCRIPTION | Date | APPROVED |
|           |     |             |      |          |



**SPECIFICATIONS**

FREQUENCY RANGE: 3.4–4.8 GHz  
 INSERTION LOSS: 1.3dB Max.  
 ISOLATION: 80dB Min.  
 VSWR: 1.60:1 Max.  
 RF INPUT POWER: 200mW Max.  
 SWITCHING SPEED: 100nSec Typ.

**VOLTAGE/CURRENT REQUIRED**

+5Vdc @ +30mA, Typical  
 -5Vdc @ -30mA, Typical

**TTL CONTROL LOGIC**

LOGIC "0" (-0.3V to +0.8V)=ON  
 LOGIC "1" (+2V to +5V)=OFF

|   |  |  |        |                  |
|---|--|--|--------|------------------|
| MATERIAL:   |  | <b>MCLI</b> MICROWAVE COMMUNICATIONS LABORATORIES INC.<br>7255 30TH AVE. N. SAINT PETERSBURG, FL 33710<br>TEL: (727) 344-6254 FAX: (727) 381-6116<br><a href="http://www.mcli.com">http://www.mcli.com</a> | SCALE: | N/A              |
|   |  |  | SHEET: | N/A              |
| UNLESS OTHERWISE SPECIFIED:<br>TOLERANCES<br>IN (INCHES) OR [mm] (MILLIMETERS)<br>FRACTIONS: $\pm 1/64$<br>DECIMALS: $\pm .02 \pm .008$<br>ANGLE: $\pm 1/2^\circ$ |  | DRAWING TITLE:<br>PIN DIODE SWITCHES, REFLECTIVE   |        |                  |
| DRAWN:<br>Paiboon Luekhamhan  |  | PART NO.<br>D2-34/REF  |        |                  |
| DATE:<br>06-17-2010   |  | CAGE CODE:<br>OD2L5  |        |                  |
| APPROVED:<br>T. Nguyen  |  | DATE:<br>06-17-2010  |        |                  |
| THIRD ANGLE PROJECTION  |  | SIZE:<br>A   |        | REV:<br>A        |
|   |  | DO NOT SCALE THE DRAWING   |        | DWG NO.<br>84889 |