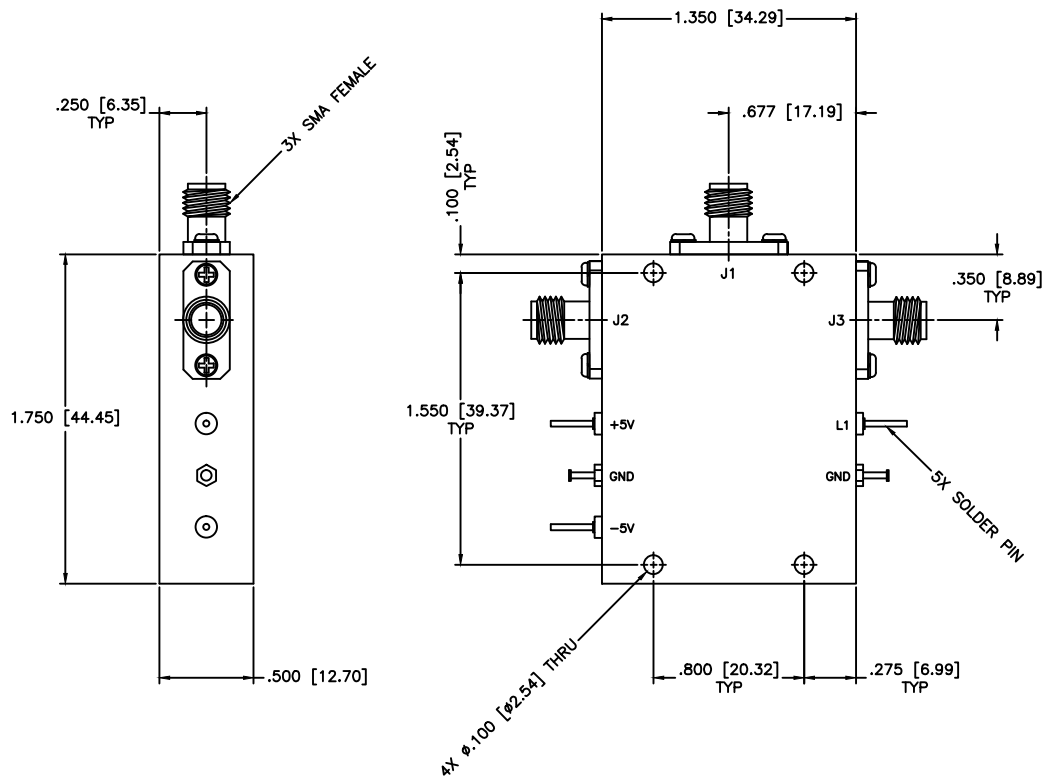


REVISIONS				
ZONE	REV	DESCRIPTION	Date	APPROVED



**SPECIFICATIONS**

FREQUENCY RANGE: 3.4–4.8 GHz  
 INSERTION LOSS: 1.5dB Max.  
 ISOLATION: 80dB Min.  
 VSWR: 1.60:1 Max.  
 RF INPUT POWER: 200mW Max.  
 SWITCHING SPEED: 100nSec Typ.

**VOLTAGE/CURRENT REQUIRED**

+5Vdc @ +30mA, Typical  
 -5Vdc @ -30mA, Typical

**TTL CONTROL LOGIC**

LOGIC "0" (-0.3V to +0.8V)=ON  
 LOGIC "1" (+2V to +5V)=OFF

MATERIAL:		<b>MCLI</b> MICROWAVE COMMUNICATIONS LABORATORIES INC. 7255 30TH AVE. N. SAINT PETERSBURG, FL 33710 TEL: (727) 344-6254 FAX: (727) 381-6116 <a href="http://www.mcli.com">http://www.mcli.com</a>	SCALE:	N/A
			SHEET:	N/A
UNLESS OTHERWISE SPECIFIED: TOLERANCES IN (INCHES) OR [mm] (MILLIMETERS) FRACTIONS: $\pm 1/64$ DECIMALS: $\pm .02 \pm .008$ ANGLE: $\pm 1/2^\circ$		DRAWING TITLE: <b>PIN DIODE SWITCHES, ABSORPTIVE</b>		
DRAWN: Paiboon Luekhamhan		PART NO. <b>D2-34/ABS</b>		
DATE: 06-17-2010		CAGE CODE: OD2L5		
APPROVED: T. Nguyen		DATE: 06-17-2010		
THIRD ANGLE PROJECTION		SIZE: A REV: A DWG NO. 84888		
		DO NOT SCALE THE DRAWING		